



Trail Torque

The official Newsletter of the New Zealand Four Wheel Drive Association

September/October/November 2022



**Land Access • Upcoming 4x4 Events •
NZFWDA Subcommittees & more...**

Established in 1974,
the objective of the
Association is to
further and improve
Four Wheel Drive
activities in NZ.

As a member of the NZFWDA, you
become an integral part of this effort
to ensure that present and future
generations can continue to enjoy
our country in four wheel drive
vehicles.

Postal Address:

New Zealand Four Wheel Drive
Association Inc.
PO Box 90960,
Victoria Street West,
Auckland 1142

NZFWDA ONLINE:

www.nzfwda.org.nz
<https://nzfwda.tidyhq.com>

FACEBOOK:

<https://www.facebook.com/NewZealandFourWheelDriveAssociationInc>



Inside this Edition

Deadlines for Trail Torque Submissions	2
Land Access Corner	3
Budget Subcommittee	3
H & S Subcommittee	3
Instructions for Club Payment to NZFWDA for 2022/2023	4
NZFWDA on Twitter	4
Remit Subcommittee	4
Are you Incommunicado?	5
Remits Timetable	5
SWOT Subcommittee	6
NZ 4x4 National Trials Calendar	6
Having trouble logging into the Members' portal on TidyHQ?	7
Seatbelts	7
Life Members of the NZFWDA	7
NZFWDA Community Engagement - McKenzie Trail	8
Mt Egmont 4WD Club Pairs Event	9
2022 Matariki Forestry 4x4 Charity Run	9
Central Zone Club Truck Challenge	10-12
NZFWDA 2022/2023 AGM	13
Executive Reports	14-17
Advertising in Trail Torque	15
Letters to the Editor	15
NZFWDA Executive	16
Mainland Winch Challenge Calendar	17
Northern Zone Clubs	18
Central Zone Clubs	19
Southern Zone Clubs	19
Kids Page	20

Deadlines for Trail Torque Submissions

DEC 2022 JAN/FEB 2023
Deadline: 25 November 2022
Out to Members: 11 December 2022

MAR/APR/MAY 2023
Deadline: 17 February 2023
Out to Members: 5 March 2023

JUN/JUL/AUG 2023
Deadline: 2 June 2023
Out to Members: 18 June 2023

If you would like to share your Club's
achievements, events or a story
in Trail Torque, send them in to
editor@nzfwda.org.nz



COVER PHOTO

Dave Smithson going wild in Wainuioru at the
Club Truck Challenge.

Photo by Andrew Gee

THE NEW ZEALAND FOUR WHEEL DRIVE ASSOCIATION

Values the highest safety standards before, during and after all 4WD activities.

Endorses respect and care while participating in 4WD activities in the Environment.

Acknowledges the contribution of its members and their values.

Values and respects land owners and land users.

Encourages non-discrimination of all participants.

ARTICLES AND LETTERS NZFWDA DISCLAIMER.

The views and opinions of contributors to this publication are those of the author(s) and unless stated otherwise do not necessarily reflect the opinions or views of NZFWDA. Responsibility for the views and information in articles lies with the author(s) concerned. The NZFWDA and its editor reserve the right to edit abridge or discard any or all material submitted for publication. **Copyright.** The New Zealand Four Wheel Drive Association claims copyright and the right to be acknowledged as the publisher of Trail Torque and its contents.

Trail Torque is produced four times a year and delivered via the NZFWDA Membership email database.

LAND ACCESS CORNER

In thinking about the topic LAND ACCESS I wonder if it would be better titled LAND CARE because that is what matters to the landowners. And it is what matters to the owner that matters, not what it means to us.

Current Activity

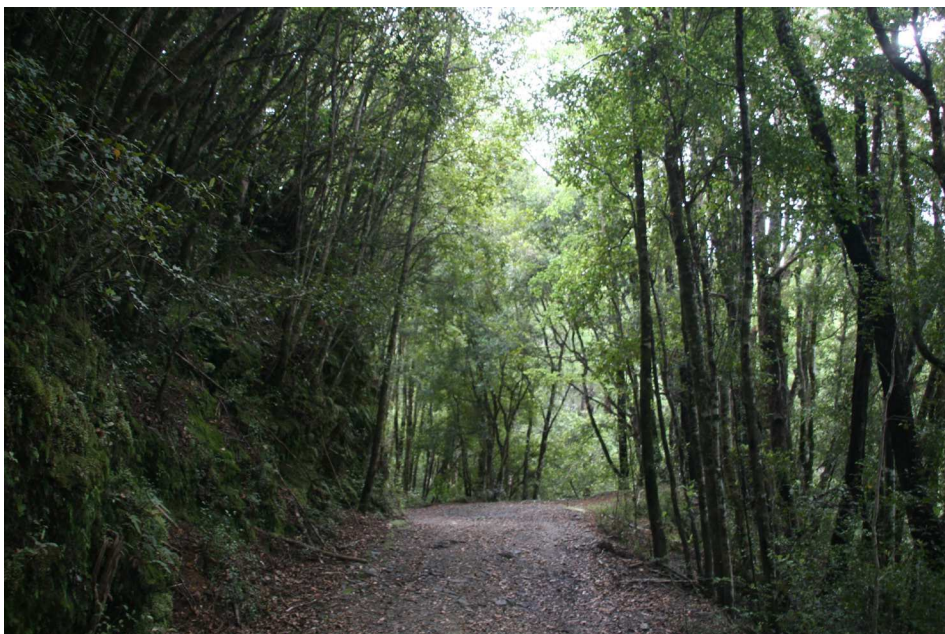
Your Association has made submissions to:

- Auckland City re Muriwai Beach Access;
- Manawatu District re Opawe Road;
- Hauraki District re Maratoto Road.

At this stage Hauraki have completed their decisions with no restrictions on the routes they originally proposed. So, a success for the local Club and Association submissions. However, we anticipate further discussions with Council on better management of the routes in question.

We need to be mindful that Councils are "Road Controlling Authorities" and should be openly discussing issues they may have re our use of legal roads and routes.

An emerging subject is a couple of "roads" heading to the Kaimanawas from the Desert Rd. These were taken for power station construction, never Gazetted as legal roads, but freely used for years by the public. Now they are to be given back to the original landowners so public access will be at the discretion and goodwill



of the new (old!) owners. Watch this space.

The future management of roads and streets

Another new issue is potential changes to the way roads are managed, legally speaking. Whilst designed to give greater and quicker powers to implement cycleways, pedestrianised areas and the like they would affect all roads, both formed and unformed. See the consultation at:

[Reshaping Streets | Waka Kotahi NZ Transport Agency \(nzta.govt.nz\)](https://www.nzta.govt.nz/consultation/reshaping-streets/)

And make your views known.

Responsible Land Use

As we go four wheeling we often see others who may be less respectful of the environment which can give both short term and long term effects including the loss of all access. So why not have a chat to others, talk about responsible use and how misuse is seen by others. Encourage them to check out a Club web site or even join a Club. We need to remember it is not what we think about our activities, it is what others think that matters and how it encourages authorities to allow or block our access.

Cheers

Ian Hutchings

landaccess@nzfwda.org.nz

Budget Subcommittee

This subcommittee's Terms of Reference were also renewed by the Exec, with the members being Neville Dunton, Jo Lilford, Brian Howat, Dan Barnett, Grant Purdie, Ian Hutchings, Peter Vahry.

With the budget figures now inserted into the monthly financial reporting for the Exec, the Exec will be monitoring progress against budget and the Budget Subcommittee will convene later this year to look at forecasts for the coming years.

H&S Subcommittee

The Exec renewed the Terms of Reference for this subcommittee. The members are Dan Barnett, David Sole, Grant Purdie, John McDonald and Neville Dunton.

A standard form has been developed for Clubs to use when reporting and investigating accidents, incidents and near misses, with the aim of identifying lessons learned that can

be shared with Clubs and members. Once the form is approved by the Exec it will be sent out to Clubs.

From the 7 events that the subcommittee has reviewed to date, several "lessons learnt" have been shared through articles in Trail Torque and e-news over the brief period since this process began.

Club H&S Responsibilities

Trip Leaders and all other club officials have H&S responsibilities.

The NZFWDA recommends that every affiliated 4wd Club:

- Adopts its own Health and Safety Policy.
- Adopts its own health and safety processes, documents and forms.

Instructions for Club payments to NZFWDA 2022/2023 year

Updates have been sent to Club committees, Secretaries and Treasurers with instructions for Club payments to NZFWDA to process this year's membership payments.

Secretaries,

If you have had this year's club AGM, please send membership@nzfwda.org.nz your list of President, Secretary, Treasurer & Delegate with up to date mobiles and email addresses.

Club Treasurers,

The \$40 fees per member are due between 1 June - 31 July each year, providing membership from 1st July 2022 to 30th June 2023.

The Pro-rata fee is \$30 for NEW members after 1 January 2023, but before 30 June 2023.

Process

- Treasurers are required to make payment into the NZFWDA bank account as normal with club name in reference and send payment notification to: treasurer@nzfwda.org.nz
- A list of the members paid for including up to date mobile numbers and email addresses to membership@nzfwda.org.nz.
- If members do not have a mobile number or email address please provide a land line number and postal address.
- Payment is processed once the NZFWDA receives the funds and the membership list. If either is missing it won't be processed.
- Members will then be emailed with a confirmation of payment.
- Correct emails are essential for receiving Trail Torque and notifications from the NZFWDA.

Thank you for your time and thanks to those clubs who have already complied.

NZFWDA affiliated Clubs, here's a reminder of what's required of you as an affiliated member to the NZFWDA

- Keep us up-to-date with the names and contact details of your executive positions (President, Secretary, Treasurer & Delegate) after your AGM
- Provide a delegate/s to vote on your club's behalf at zone meetings and attend national AGM's.
- Be responsible for payment of your members' yearly subscriptions to the NZFWDA by 31st July each year,
- include in an email to membership@nzfwda.org.nz an updated members payment list. (including current email addresses and mobile numbers)
- Payment can be made directly to our BNZ bank account 02-0856-0023824-000 use your club name as reference
- Notify us of any incidents/accidents, near misses on club events within a timely matter
- Where possible become incorporated to protect the financial welfare of your members. <https://is-register.companiesoffice.govt.nz/#>

More comprehensive information can be found in the NZFWDA Constitution Chapter 25 Page 21.

Kind regards
Joanna Lilford
treasurer@nzfwda.org.nz

NOTE: As an incorporated society we are required by law to keep the correct details of all members, and it is also a requirement in the NZFWDA constitution.



Remit Subcommittee

The Exec appointed the 2022-2023 Remit Subcommittee:

Northern Zone	John Hickey, Sam Whalley
Central Zone	Ian Hutchings
Southern Zone	Bob Holmes
Comps	Scott Biggs
National Exec	Neville Dunton, Grant Purdie

The Exec also extended the terms of reference to include Regulations, Duties of Officers and Standing Orders in addition to the requirements of the constitution.

A number of topics have already been listed for the subcommittee and its first meeting is being organised.

KEY HEALTH & SAFETY MESSAGES
Remember – it is everybody's obligation to act safely
Take responsibility for what you can control.

Are you Incommunicado?

ARTICLE BY DAVID SOLE

NZFWDA gathers details from around New Zealand on incidents which may have or have caused serious harm. While these are mostly club based, some are in the work place and outside of the association's control but there are always lessons to be learnt.

Since the beginning of this year, when monitoring became more active, there have been four incidents with varying outcomes but all of which could have seen less harm done, or even avoided, had there been more effective communication.

The very nature of our sport and recreation activity puts us well into the risk category – we all have those dents and scratches as unwitting evidence. Fortunately by far, the majority of these are on our vehicles and not our people!

However, from the seemingly most innocuous trips to the tougher trips incidents do happen and recent reports suggest these have all been through lack of communication, communications not being understood or communications being ignored. How can we mitigate this for the benefit of the participants, the clubs and the sport?

NZFWDA has a suite of resources for trip leaders, and any member who wishes can tap into them, in its database at <https://nzfwda.tidyhq.com/public/pages/main-page> (you need to be logged in to TidyHQ to see this). Included in this is planning for trip leaders, trip briefings where known hazards are identified, incident protocols are spelt out so everyone knows from the start of the trip, having the right ratio of experienced people on a trip that can support the trip leader and how communications will be conducted on the trip.

Incidents often happen towards the end of trips. It's been a great day, driving has required intense concentration, tracks may have had to be dug out, a complicated recovery, hungry passengers are getting scratchy, the trip is running late, overly familiar with the route, concentration lapses and..... oh dear... we have all been there!

Recoveries need a single coordinator at any one time who has oversight of the incident site, can see where people are in relation to the recovery, understands what is required and, after a plan is agreed to, coordinates the recovery using clear communications. It is incumbent on everyone to follow a recovery plan until it is either successful or becomes apparent it is not going to work and a reset is needed. Making side decisions, not making any decisions at all or 'recovery control by committee' is simply courting disaster.

Direction can be given by radio, spoken, shouted or by arm/hand movements. Be sure that the language or system used is understood by everyone and instructions must be clear and consistent.

One of the real joys of four wheel driving is that while we participate as individuals we come together as a team when the proverbial hits the fan - be it a lamb's pile or a wad of elephant's. A good plan well executed and a good outcome is extremely satisfying and is always a learning experience for everyone in avoiding the hazards a poor recovery presents.



...we come together as a team when the proverbial hits the fan - be it a lamb's pile or a wad of elephant's.

REMITs TIMETABLE

	DUE DATE	CONSTITUTION CLAUSE
From Financial Members to National Secretary	31 January	35 b
From Remit Subcommittee to National Exec for confirmation	28 February	14 d
To Club Secretaries	31 March	17 m & 35 d

SWOT Subcommittee

We welcome Tariq, our new Membership Officer, who has joined this subcommittee which now comprises Neville Dunton, Peter Vahry, Dan Barnett, Tariq Wasim and Grant Purdie. The new Exec renewed our Terms of Reference for the coming 2022-2023 year, you can view the document in our Online Document Library.

Our focus continues to be doing and managing the work of many actions that will, collectively, achieve the outcomes that have been agreed. The review of the Association's purpose came up with:

Purpose

It was agreed that what's already in the constitution is fine:

The objects of the Association shall be the furtherance and improvement of Four Wheel Drive activities in New Zealand and the doing of all such things as are incidental or conducive to the attainment of the above object...

The Exec will look at modernising and simplifying the wording though.

Mission

Work on actions to achieve outcomes that attain our vision.

The outcomes are:

1. Focus on "going 4wding"
2. Provide resources to Clubs and members
3. Better engagement with Clubs and members
4. Achieve a better direction for the Association
5. Improved Exec performance

The SWOT Subcommittee is managing the work of many actions that will, collectively, achieve the outcomes.

Strategy

Prioritise the actions to produce the most relevant contributions to our outcomes. Some actions to be complete in the short term, others in the longer term.

Implementation

National Exec

- Whole-of-organisation governance
- Oversight of implementing the strategy

SWOT Subcommittee

- Overall planning and management of actions
- Reporting to the National Exec
- Reporting to Members through e-news and Trail Torque

Other Subcommittees

- Land Access Forum
- H&S
- Budget
- Remit

Volunteers

- From the National Exec
- Other members

All the above was presented at the pre-AGM Forum. A copy of the presentation is now available in the Online Document Library, on the sub-page SWOT Document Library. If you are logged in to our members portal on TidyHQ, it is at this link: <https://nzfwda.tidyhq.com/public/storage/f/213c16405b79e1c537021f54aafd78f8/NZFWDA-Vision-etc-Presentation-to-Pre-AGM-2022-v02.pdf>

Making sure that we know what members want is vital to all this. The mini-surveys that we ran over the last year provided valuable information that has helped guide us in our work. Obviously it's impossible to satisfy the needs of every member, some are quite contradictory with each other - it's the majority views that we focus on. And also identifying where members and clubs have pain-points or complaints that we can try to solve.

NZ 4x4 NATIONAL TRIALS CALENDAR

12 NOVEMBER 2022

Round 1: Whangarei.
Omaikao Road.

10 DECEMBER 2022

Round 2: Wairarapa.
Pirinoa, South Wairarapa

22 JANUARY 2023

Round 3: Rangiwhia.

12 FEBRUARY 2023

Round 4: Bay of Plenty.

5 MARCH 2023

Round 5: Manawatu.

15 APRIL 2023

Round 6: Thames Valley
National 4x4 Trials Final.



See nz4x4trials.co.nz for more info

RESCUE CHOPPER TIP - One of our members has suggested that you carry a lighter in your vehicle. It doesn't have to go, as long as the flint flashes. The helicopter pilots night vision goggles can pick up the flash of the flint from a long way off to help guide them.

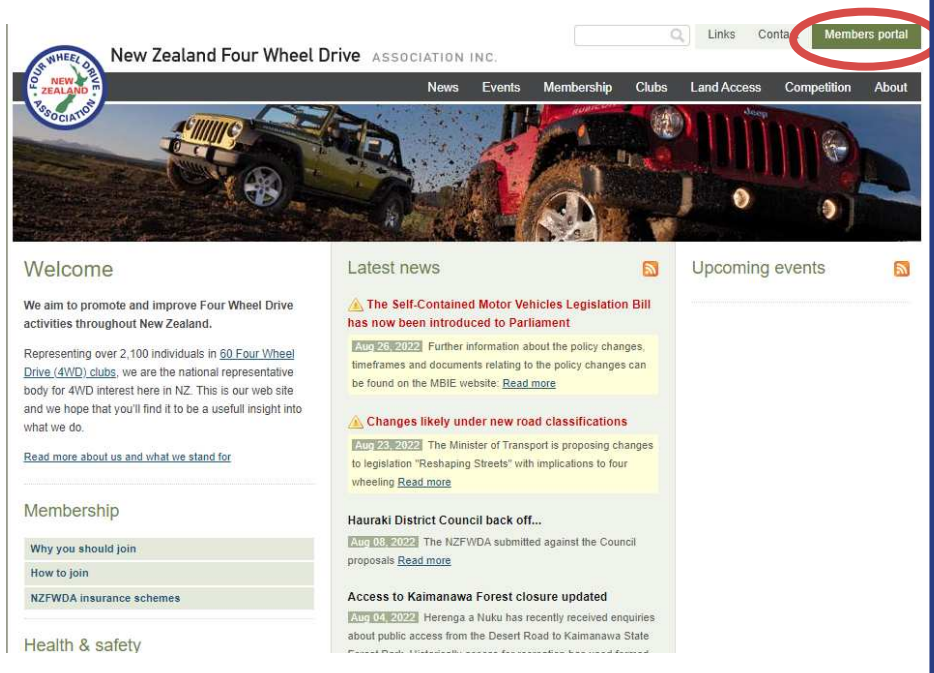
Having trouble logging in to the Members' Portal in TidyHQ?

Try going to www.nzfwda.org.nz and click the link at the top right "Members Portal" which takes you to TidyHQ. If you're not already signed in, then click the "Log in" button at top right.

Enter your email address that your Club has registered with us. It then asks for your password – enter it. If you don't remember it, click "I forgot my password" and follow the prompts.

What could possibly go wrong? It's usually if you've used a different email address to the one your Club registered for you. If it doesn't recognise the email you entered, **DO NOT** click "Create an Account" as that will not get you into the NZFWDA system.

For help, contact Jenny by email at helpdesk@nzfwda.org.nz or txt at 021 149 6021.



SEATBELTS

All persons travelling in a vehicle where seat belts are fitted in their seating position must wear the seat belts.

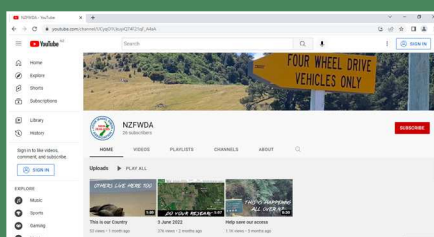
A fine of \$150 can be issued to all occupants (aged 15 and over) of a moving vehicle who are not wearing a seatbelt. Children 8-14 years old are the responsibility of the driver and any fine is payable by the driver. People over 15 are responsible for their own fine. Children aged 0-7 years must use an approved safety seat.

There are some exemption scenarios but, as a general principle, the above laws should be followed.

A driver of a vehicle that left a remote 4WD track and crashed down a steep bank was charged with careless driving causing death. Neither the driver nor his three passengers were wearing seatbelts and the prosecution claimed the lack of passenger restraints were contributing factors to the driver not having full control of the vehicle and the death of his front seat passenger.



There are a lot of four wheelers out there who don't recognise the risks created by their own behaviours. The NZFWDA is putting together some video messages aimed at reaching that wider enthusiast community check them out on



YouTube <https://www.youtube.com/channel/UCyqO1UkuyiQ74F21qFA4aA>

LIFE MEMBERS OF THE NEW ZEALAND FOUR WHEEL DRIVE ASSOCIATION.

Awarded 2021 - Neville Dunton
Awarded 2021 - Mel Street
Awarded 2018 - Russell Quin
Awarded 2017 - Bob Holmes
Awarded 2017 - Eileen Revell (nee Austin)

Awarded 2017 - Steve McMinn
Awarded 2016 - John & Nonnie Cowper
Awarded 2015 - Ces Horan
Awarded 2015 - Kath Jaggard
Awarded 2011 - Peter Vahry

NZFWDA Community Engagement

McKenzie Trail



As many members will know, especially in Central Zone, the McKenzie Trail near Foxton Beach is a prized 4wd track that we have campaigned for over 20 years to keep open.

Over the last couple of years there has been an increase in trail bikes and 4wds doing damage in no-go sand dunes and wetlands at Foxton Beach, not surprising given the gradual disappearance of signage etc over the last few years. This has led to some angst in the community and there have been calls to shut off all access in the area, including the McKenzie Trail.

As part of maintaining relationships with the community, since Christmas we have met with representatives of the Horowhenua District Council and several other interest groups where we have expressed our support for managed access and contributed our ideas on signage and other solutions. We are grateful to our National Land

Access Officer (Ian Hutchings), Central Zone PRO (John Vruink) and National Projects Officer (Grant Purdie) for the time and effort they have put into this.

In addition to the massive work parties of bygone years by members of the Cross Country Vehicle Club (CCVC) and other CZ Clubs, over the last year CCVC assisted in dune planting and car wreck removal at Foxton Beach.

Grant was invited to do a presentation to the Foxton Beach Progressive Association AGM on Sunday 31 July. It was to be part of the larger presentation by Arnim Littek, the biologist who lives at the beach and is very active with dune protection and encouraging the survival and growth of native plants.

The gathering of 40 or so people included:

- The Mayor of Horowhenua District Council (HDC), Bernie Wanden

- An elected HDC councillor, Ross Brannigan
- The new HDC CEO, Monique Davidson

This was a great opportunity to explain our contributions over the years and our ongoing interest as a stakeholder, all with the aim of ensuring we maintain and maybe even improve 4wd access in the area. So now the new CEO is aware of us. This was the second time the Mayor had been exposed to some of this material and he saw us during the recent planting work party. Ross is very familiar with us and indeed spoke in support of us and our mana during a council hearing last year.

Many others present were local ratepayers and there were also representatives of numerous interest groups.

Grant was gratified to receive a round of applause for his presentation.

2022 Matariki Forestry 4x4 Charity Run

SATURDAY, 15 OCTOBER 2022 8:30am - 5pm

Entries for the 4x4 Charity run are now open - limited numbers! Little different to previous years....

We are running a tough truck section in Waihi this year. It will be limited to 25 trucks, first in, first served. This is a reasonably challenging track, and you are at risk of bush rash. If you drive well, you will be safe from panel damage. Rated tow hooks and mud tyres are a requirement. Entry is \$120 for the day. Link: <https://form.jotform.com/222281852856866>

We are running a shiney run in the Whangamata forest this year. It will be limited to 40 vehicles. This run can be with road tyres. There will be some optional sections for people who want a little more excitement, but they will be optional. There is some beautiful

coastal scenery in the area. Entry is \$100 for the day. Link: <https://form.jotform.com/222282127673859>

Everyone will also have the option of purchasing a Whangamata 4x4 Club tee shirt for \$35. Please add this to your payment, and email your size requirements.

Remember, all proceeds from these runs are donated to local charities who require our support. Please be generous. All profits from tee shirt purchases will be donated also.

This year current WOF's will be required on all vehicles!!

Any questions, please email whangamata4x4@gmail.com



We will have spot prizes and raffles on the day. Proudly supported by Matariki Forestry and Road Life Motorhomes and Caravans. Without our sponsors, this day would not happen.



10 Year Anniversary!

MT EGMONT 4WD CLUB PAIRS EVENT

SATURDAY 1 OCTOBER 2022
300 LOWER DURHAM ROAD,
INGLEWOOD
9AM START



Mt Egmont 4WD Club is proud to be hosting our 10th event... This ones going to be the biggest ever!

The event is in the same location as always - **300 Lower Durham Road, Inglewood.**

Share the event around with your friends, family, neighbours and anyone you may know that loves watching thrills, spills and adrenaline junkie filled entertainment! Make sure you tell them it's the place to be!

ADMISSION PRICES:
CASH ONLY at the gate!
Family (2 Adults and 3 Children) \$20
Adults \$10
Children \$5

Strictly no Dogs or Alcohol please

There will be multiple food and drink vendors on site to cater to all needs, we've got everything covered! After 10 years of this event, we could practically organise the event with our eyes closed!

If you're interested in entering our event or have any questions, please email rachel.buckthought@hotmail.com for an entry form. As long as you are an affiliated member of a NZFWDA Club and have another truck to pair up with, we want you here!

Come and see what all the action is about! You'll be talking about it for ages!

CENTRAL ZONE

CLUB TRUCK CHALLENGE

ARTICLE & PHOTOS BY ANDREW GEE



There's no slaughter without laughter

Summer 2022 has faded into memory, but we managed to hold five rounds of the Club Truck Challenge (CTC) from October 2021 to May 2022, from Taihape to Wairarapa via Colyton and Tokamaru, in times like these, that's good going. We have a good cadre of keen competitors who will travel from event to event to do the whole Series. It's no great chore because most events are a weekend campout with good company if you chose to stay at the site. The people who have done at least three rounds over the season, have their three best results used to calculate a Season placing

in each class, there isn't an overall champ declared because the emphasis is still on only competing with equal machinery - and driving skill.

This year turned out to be a Wairarapa 4wd Club lock out as all four Class champions were from the same Club, but it was thoroughly well deserved as they and many other Wairarapa Club members travelled around the country to do all the events. Class 1 (no traction aids) went to Chris Mason, Class 2 (auto traction aids) Mark Smith, Class 3 (manual traction aids) Kevin Galbraith and Class 4 (unlimited mods) Brent Ward, great mahi guys.

The "Blue denim in his veins" award goes to the working-class man Chris

Mason who dominated the unmodified Class 1 in his Suzuki Jimny and managed to set some of the fastest speed section times during the year against some much more powerful machines.

Class 2 has the benefit of limited slip differentials and up to 33 in tyres, Mark "Handlebars" Smith took the honours in his Jeep even though he splits his motorsport during the year between racing classic sidecars and 4x4s.

The "All you need is love" award went to Dave Smithson, second in Class 2 this year proving that all you need is love, hope and an endless supply of Mitsubishi Pajeros to do well.



The “Man of many parts” award went to Brendan Watchorn, third in Class 2 this year. As well as competing Brendan took over the series convenor role this season and still holds the record as the only person who has competed in every single round of the CTC that has been held over the last eleven years.

Natasha Smithson and Dave Seymour rounded out the Class 2 place getters. Class 2 is the most popular class; the trucks aren’t hugely modified but can be very competitive in the right hands.

The “You can’t handle the truth” award for Class 3 went to Kevin Galbraith, another one of the Wairarapa club’s few good men. Class 3 ups the ante

Brendan Watchorn holds the record as the only person who has competed in every single round of the CTC that has been held over the last eleven years.

*Brent Ward,
Round 3
in Colyton*





*Brendan Watchorn
Round One in Taihape*

by allowing 35 in tyres and manually operated diff locks modifications to the vehicle. Mods are always good, but they can just lead you into a lot of trouble, tales of front lockers sending drivers up trees are common.

The "Spirit of Club truck" award goes to Andrew Gee, Steve Stewart and Dave McGinnity, the Class 3 runners up who still drive to the events in their Club trucks on their big ugly tyres at the cost of their dental work, hearing and sanity.

The "You're looking good, I am good" award goes to Brent Ward for first place in Class 4 this year. Brent couldn't leave a hill without throwing a few kilowatts at it.

The "Bravest man south of Taupo" award goes to Brent's navigator, Gary Gazza who sits in the Nissan without any control over where it goes. The South of Taupo refers to the birth of the Club Truck which was originally "the Central Zone Club Truck Challenge" back in 2011 and where CZ Clubs come from, nowadays we welcome any NZFWDA members to join in.

For "Services to Agriculture" the award goes to David Hintz who is outstanding in his field, yes it really is his field. His Nissan Patrol came in second place for the Season, but his daughter Grace is champing at the bit to take over driving on her own account. David put together several of the courses over the summer, thanks for your mahi.

The Holy Father, Peter the Pope with steadfast Shirley at his side is "Mister Clean and Tidy" in his Jeep Wrangler

JK. The Jeep's computer-controlled traction control puts Peter in Class 4 in his largely standard machine versus the unlimited modified machines, regardless Peter does well.

The new season usually begins in October, keep an eye on the website for the upcoming calendar. Vehicle rules and event calendar at www.sporty.co.nz/czctc

2021-2022 SEASON RESULTS

CLASS 1

1st..... Chris Mason - Suzuki Jimny

CLASS 2

1st..... Mark Smith - Jeep Wrangler
2nd.... Dave Smithson - Mitsubishi Pajero
3rd Brendan Watchorn - Mitsubishi Pajero
4th..... Natasha Smithson - Mitsubishi Pajero
5th..... Dave Seymour - Mitsubishi Pajero

CLASS 3

1st..... Kevin Galbraith - Jeep Wrangler
2nd.... Andrew Gee - Jeep Wrangler
3rd Steve Stewart - Nissan Patrol
4th..... Dave McGinnity - Jeep Wrangler

CLASS 4

1st..... Brent Ward - Nissan Patrol
2nd.... Dave Hintz - Nissan Patrol
3rd Peter Pope - Jeep Wrangler



Mark Smith at Taihape

Mods are always good, but they can just lead you into a lot of trouble, tales of front lockers sending drivers up trees are common.



Mark Smith



Brent Ward



Chris Mason



Kevin Galbraith

Check out the vehicle rules and event calendar for the Club Truck Challenge at www.sporty.co.nz/czctc

New Zealand Four Wheel Drive Association, AGM 2023



Methven, Mid Canterbury
15th to 21st May

Photo: Lake Camp 2011



Photo: Avoca River 2009

Overview

The AGM will be held on Sunday the 21st May 2023 after a week of activities. Monday through Saturday we will have 4x4 trips each day and with a meal in a different place each night. Saturday we will have a selection of adventures in the Mid Canterbury region ranging from Hot Air Ballooning to Jet boat rides plus plenty of other activities. If you join us for the week you will most likely have your own vehicle but if you fly in we will pick you up at the Christchurch Airport. The AGM will be held on Sunday. We will be based at Brinkley Resort in Methven but Methven has plenty of accommodation ranging from 5 star hotel to backpacker, at that time of year there should be plenty of vacancies.



Photo: Harper River 2009

Proposed Program:

Monday 15th

Tuesday 16th

Wednesday 17th

Thursday 18th

Friday 19th

Saturday 20th

4x4 Trip up the Lawrence River to Hermitage Hut

4x4 Trip up the Havelock River to Mistake Flat

4x4 Trip up the Rakaia River to the Reischek Hut

4x4 Trip up the Wilberforce River to Urquharts Hut

4x4 Trip down the Rangitata river to the Harper Skating Rink

4x4 trip up the Harper & Avoca Rivers

We have a selection of other adventures available.

- [Hot Air Balloon Rides](#)
- [The Ashburton Aviation Museum](#)
- [The Ashburton Museum and Art Gallery](#)
- [Ashford Village](#)
- [Scenic flight round Mid Canterbury](#)
- Target shoot with Muzzleloader and a selection of other rifles
- [Erewhon Clydesdale Wagon Tour](#)
- [High Country Horse Adventures](#)
- Jet boat rides in the Rakaia River
- [Rangitata Rafting](#) for the brave
- [Skydiving](#)
- [Dirt Bandits](#)
- [Mid Canterbury 4x4 Park](#)

Sunday 21st

The Conference and AGM will be held at the Brinkley Resort, Methven



Photo: Rangitata River 2011



Photo: Mistake Flat Hut 2011



Photo: Reischek Hut 2010

Please contact the host club for pre-registraion. Number won't be limited but it is always good to know how many are coming.

Host Club: **Mid Canterbury Four Wheel Drive Club**
Organiser: **John McDonald, Southern Zone PRO**
Phone: **021 464 639**
Email: john.mcdonald@extra.co.nz



President Report

Neville Dunton - Email: president@nzfwda.org.nz - Mobile: 027 446 5634



TRIP PLANNING / TRIP LEADERS

The days of phoning a few mates to go on an impromptu trip without planning are, sadly, long in the past.

The rules of engagement around 4WD trips and specifically NZFWDA / Club trips have needed to be re-written in the wake of the Health and Safety in the Workplace Act (HSWA), and heightened awareness by local authorities of their statutory obligations around Resource Management Act (RMA) compliance, etc. Think Deadwood 2019 RMA prosecutions and penalties imposed.

So, first things first; we all need to know we are ok to go where we want to go before we go..... this means being aware of, or having confirmed, that we can legally enter a property, trail, track, area, formed / unformed road, before we get there. This may take a bit of research; but just because we went there previously, or "we have been going there for years" doesn't mean we can assume that things have remained unchanged. Managing environmental aspects is also important (RMA).

NZFWDA has published a 4WD Trip Standard Operating Procedure (SOP); yes, I know this sounds like more bureaucracy and paper work but these things are now necessary to ensure your Club's sanctioning of the trip. Here's a short summary....

Trip preparation details are included in the NZFWDA Trip SOP; use as much or as little as you consider appropriate.

Every Trip should have a Trip Leader whose responsibilities include ensuring the trip is confirmed, in advance, as a Club event and the trip is appropriately recorded in your Club's calendar (or similar).

Every trip should have a defined start and end; before you start you should

know who is on the trip and, at the end, you should ensure everyone is accounted for. Have an agreed start and end point for all participants and sign in and out at those points.

Before you begin you should do a Trip Briefing covering items such as:

- all vehicles are up to scratch and have proper recovery points / equipment, etc
- radio comms
- expected conditions
- identification of hazards and safety practices while using any recovery equipment
- Note; before undertaking any recovery ensure you have driver's agreement and that things are supervised by trip leader or someone delegated by the trip leader, etc.
- Legal and safe driving practices are in effect at all times and don't forget those seatbelts when on the move! We all understand that some may choose not to wear a seat belt when crossing deep and/or swift flowing rivers.
- Convoy rules, gate protocols, tail-end Charlie protocols and any assistant trip leaders should all be advised before start.

During the trip the Trip Leader should monitor what is happening and ensure safe practices are followed; this should include making sure any hazards are negotiated safely and also to avoid risk of environmental damage, and, as far as practicable, to manage any vehicle recovery operation.

If things go pear-shaped then reconsider things but don't fall into the trap of "leading by committee". There should only be one voice giving instructions / guidance.

Drivers are responsible for the appropriate behaviour of all persons they have brought on the trip / event and each person is responsible for

their own safety and to have care for the safety of others.

NZFWDA 4WD Trip SOP's include guidance around "Emergency Planning"; you should know these things backwards and forwards and be confident of putting them into effect before you start planning your trip.

I know these matters sound "heavy" but, sadly, ours is not a sport and recreation without risks to persons or property. By following the 4WD Trip SOP, everyone will have a better chance of having an enjoyable and trouble-free trip and any adverse events might be mitigated by having advanced awareness of who should do what. Being informed and aware, and having appropriate planning in place before you start, will significantly reduce risk, and nasty surprises.

Members can find the NZFWDA 4WD Trip SOP on TidyHQ: NZFWDA Public Page > Menu>- Online Document Library Main Page > Sample Forms and Documents> Sample Trip SOP / Trip Leaders Checklist.

The NZFWDA's H&S Guidelines document contains greater detail about all this, see section 6.3 on pages 13-15. This document is also in the online document library, under the heading "Safety & Guidelines".

There is further relevant information for Trip Leaders in the NZFWDA Regulations, in the online document library under the heading "Constitution & Regulations".

Stay safe and have fun out there!!

Neville Dunton
President, NZFWDA Inc

REMEMBER THIS SIMPLE H&S MESSAGE... YOU CAN'T INDEMNIFY OUT OF BEING STUPID.

National Public Relations Officer Report

Peter Vahry - Email: natlpro.nzfwda@gmail.com



It's been a wet winter across most of New Zealand along with the associated mud which amuses many 4WD owners but continues to upset many other communities.

Alternative venues have been sought by some, such as sand areas like Port Waikato, but the 4WD numbers and behaviors have exhausted local patience and resulted in inquiries to the NZFWDA as to who might be responsible. A check with regional Clubs identified only one Club had visited several months earlier and not driven in the sensitive area. A check in Facebook did however find a recent video from a small group of non NZFWDA 4WD enthusiasts that identified their 'offending'.

It sounds much like the Muriwai Beach situation, which continues to fester with some local resident communities now finding they have misgivings about the potential outcomes of the effects of 'managed access' for vehicles onto the beach. The upcoming local body elections may yet have some effect. One thing that might impact future use of unformed legal roads, such as those leading to the beach, is pending legislation from NZ Transport Agency that is open for submissions until 19 September <https://www.nzta.govt.nz/about-us/>

consultations/reshaping-streets-consultation

Especially **Draft Street Layouts Rule 2022:**

Section 2 - Changing the use of roadways
2.1 (1) A road controlling authority can:
(a) prohibit or restrict the use of motor vehicles, or one or more classes of motor vehicle, on the roadway:

There has been widespread concern among many recreations about the pending closure of several roads in the central North Island. Several NZFWDA members alerted me to the intention to close roads leading off the Desert Road that were built as part of the Tongariro Power scheme and also gave access to the Kaimanawa State Forest Park. I contacted Ric Cullinane, the CEO of the Outdoor Access Commission, who quickly put his team onto checking the status of those roads. In short, their reply was "These formed roadways originated from the creation of the Tongariro Power Scheme. Waipakihi and Rangipo Intake roads were taken by the Crown in the 1960s under the Public Works Act for the development of the power scheme and held as Crown land. Public access on the roadways (Crown land) has been accepted by the Crown during the

time the land has been owned by the Crown. This Crown land is now being returned to the original owners. The key is that these formed roads were never dedicated as legal roads. Once the land that these formed roads traverse is returned to the original owners, the formed roads will be private roads on private land."

A subsequent conclusion is that although it seems that it was clearly intended that those roads would be for public use after the project was completed, the process was bungled and the corridors were not formally set aside as roads. Now there is claim on those lands by local Iwi and suggestions of 'deals' being done. The Outdoor Access Commission have invited the NZFWDA to work with them and others such as the Federated Mountain Clubs and NZ Deerstalkers Assoc. to see if some access might be negotiated.

It would seem that recent weather and associated rainfall will probably have impacted many South Island 4WD routes and the NZFWDA would welcome updates on accessibility that we can pass on to members

Peter Vahry
National Public Relations

Advertising in Trail Torque

Quarter Page	(94mm x 135mm)	\$150
Half Page	(190mm x 136mm)	\$300
Full Page	(190mm x 278mm)	\$600

These prices are per edition of NZFWDA Trail Torque and do not include GST. Invoices are sent yearly and bookings must be made for a minimum of one year. Advertisements must be received copy ready and sent as jpeg or pdf to:

Bobbie Kincaid: editor@nzfwda.org.nz



All advertising ("advertising") in Trail Torque is on the basis that

1. The Editor at the Editor's discretion may accept or reject any advertisement without giving any reason.
2. The New Zealand Four Wheel Drive Association ("the Association") does not endorse or recommend or warrant any advertiser or advertising. The Association at its absolute discretion reserves the right to at any time accept or refuse any advertisement or advertising.
3. The Advertiser must ensure and warrants to the Association that all relevant laws and advertising guidelines are observed for the advertising.

Letters to the Editor

Letters to the Editor should be sent to editor@nzfwda.org.nz. Letters should not exceed 200 words and should carry the author's signature, name and residential address and a phone number so as to enable their authenticity to be confirmed. Letters may not be formally acknowledged and may be edited, abridged or discarded at the discretion of the editor.

Central Zone PRO Report

John Vruink - Email: john.vruink@gmail.com



Over the last few months I have only managed a few trips, one to Ohinewairua Taihape at Easter and McKenzie Trail Foxton beach Matariki weekend. With the rising cost of fuel I will have to select carefully which trips that I will be doing. Hopefully the latest fuel price drops continue.

An update on tracks in the central zone area

Sutherlands Track

This track is closed during winter but vehicles have been accessing this track as you can get round the gates. DOC has a replacement gate ready to be installed but have not decided the location for it yet.

Odlins Road Akatarawas

A large washout has made the track undriveable beyond Renata Saddle. ARAC has had an engineer look at the slip and has estimated \$10,000 to repair, a day to get a digger in 2 to 3 days to repair the track and a day to drive back out. ARAC is having discussions with DOC about organising the repair of the track and also trying to arrange funding to cover the cost.

Takapari Road Ruahines Rangers

The track is getting quite rutted at the start and DOC is considering putting a gate up to control access through winter. Phil Law, Manawatu Club, has been having talks with DOC and they have suggested maybe managed access with a 4x4 club looking after the access as per some other tracks

around New Zealand. Talking to some club members that drove the track a few weekends ago only a couple trucks drove the start of the track with the rest of them having to winch through.

Red Rocks Wellington South Coast Public Road

This track occasionally gets closed by the Council for health and safety reasons after the recent winter storms. The council usually repairs the track quickly, but if you are planning a trip around the coast it may pay to check if the gate is open. A new electronic gate has been installed but access has not been restricted except usually closing on Sundays allowing access for walkers only.

North Range Rd Northern Tararua Public Road

The rutts at the southern end are getting a lot deeper. If you are planning to drive this track you would want at least 1 or 2 other trucks with you in case you get into trouble. Maybe a work party could be organised to drain some of the water holes.

Whangamomona Road.

Closed for winter. NZFWDA and WRAG continue to encourage the non use of the track over the winter months from 1st May to 1st October. Taranaki Family 4x4 club has informed me that a club has used this track over winter. This

causes extra damage to the track and is not a good look with the council who we are working with to keep this track available for clubs to drive during the summer months.

McKenzie Trail Foxton Beach.

Grant Purdie is working with various groups involved with the local Foxton beach community with a meeting just last weekend. Signage is being arranged advising where you can't drive and information about the wildlife that nest in the dunes and native species that grow there. There has been an approved plan for where the signs will be placed. By working with these groups it helps us retain access to McKenzie Trail.

42 Traverse DOC land central North Island

This track is closed over winter from the 30th April to 1st December.

Makairo Track Northern Wairarapa

This track is open to use. As the track has a reasonable hard base the track can be used all year round. The eastern side can get a little bit boggy so good mud tyres are recommended. Be prepared to do some extra pruning where required and clearing of any slips that may have happened over winter. Whanganui club took half a dozen vehicles through about four weeks ago and had a good trip.

John Vruink
Central Zone PRO

2022/2023 NZFWDA Executive

The NZFWDA Executive are volunteers who administer the Association. Divided into three Regional Zone committees - Northern Zone (North Cape to Taupo), Central Zone (Taupo to Wellington), Southern Zone (the entire South Island) and a Competition Committee.

President - Neville Dunton
Secretary - Sam Whalley
Treasurer - Joanna Lilford
National PRO - Peter Vahry
Membership Officer - Tariq Wasim
National Events - Brian Howat
Land Access - Ian Hutchings
Projects - Grant Purdie

Systems - Max Wheatley
National Competitions Officer - Scott Biggs
Southern Zone (SZ) President - Bob Holmes
SZ PRO - John McDonald
SZ Vice-President - Steve Adam

Central Zone (CZ) President - Brian Howat
CZ PRO - John Vruink
CZ Vice-President - Max Charman
Northern Zone (NZ) President - John Hickey
NZ PRO - Peter Vahry
NZ Vice-President - Dan Barnett

Southern Zone President Report

Bob Holmes - Email: szpresident@nzfwda.org.nz



Hi folks, the quarterly Southern Zone General Meeting was held via Zoom on the 11th August with a good representation from Clubs. Delegates were upbeat, confirming they are holding Club events every month, be it 4WD trips, social events, training days or competition events.

There has been one enquiry made via the NZFWDA website from a 4WD Club in the Otago area interested in joining the Association. They have been sent all the relevant information along with contact details. To date we have not heard back from them.

John McDonald has been busy with the H&S Committee raising topics in relation to trip leader training, safety on trips, updating the incident report forms (including near misses), and other H&S subjects of interest to ensure that Clubs have the tools they need to minimise the risk when out there enjoying our sport.

John poked the bear at Executive level when he put his hand up on behalf of the Mid Canterbury 4WD Club to host next year's AGM for the

Association. It seems some do not like change and a poll was run to get feedback in regards to what day the AGM should be held – a Saturday or a Sunday. We are hoping for a good turn out from Southern Zone Clubs as well as North Island Clubs.

From talking to various Clubs, the Trail Torque and E-news now seem to be favourably received. We have more Club members taking advantage of the NZFWDA TidyHQ portal and the knowledge base it provides to members and Club executives.

The winch challenge competition is active in the lower South Island with the Shotover 4WD Club holding their Round of the competition at the Central Otago 4WD Club grounds on the outskirts of Alexandra. Two local Clubs helping each other out to enable the event to take place as scheduled with minimum disruption to competitors, organisers and spectators.

With the resignation of Brent Wilson - Vice President, the Zone received a nomination for Steve Adam

(President of the Mid Canterbury 4WD Club) to fill the vacancy, Steve was duly elected on the night.

The Zone executive reiterated we would like to see Clubs take advantage of the available funding opportunity that the Zone has available to it's member Clubs. We have made the offer to subsidise a Club project or activity. For example, signage at Club grounds, clearing or maintaining of tracks, spraying gorse, fencing, whatever. The Club's will apply to the Zone executive as they would for any Subsidy, outlining benefits, costing and how much the Club itself is contributing.

The Zone has had one application from the Mid Canterbury 4WD Club for a risk assessment / trip sanctioning App (this expenditure maybe at Association level). They have also applied for funding for signage at their 4WD Park.

Bob Holmes
President Southern Zone

CLUB MEMBERS' H&S RESPONSIBILITIES

Every person (including every 4wd Club and every member of a 4wd Club) is responsible for:

- Taking reasonable care for their own health and safety
- Taking reasonable care that what they do (or do not do) does not adversely affect the health and safety of anyone else
- Complying with any reasonable instruction given by the Club so that it can comply with its health and safety obligations including all safe work procedures, rules and health and safety training
- Attending any trip briefings, ensuring they can hear it, and paying attention to the details.

MAINLAND WINCH CHALLENGE CALENDAR



SEASON ENTRIES OPEN

ROUND 3 - SEPTEMBER 9-10 -
Alexandra - Run by Shotover Club
on Central Otago grounds.

ROUND 4 - OCTOBER 8-9
Dunedin - (AGM to be held here)

All Rounds can be entered online at
4x4Events.co.nz

There are a few major changes to the rule book this year including a new class.

No spectators at these events, but if you want to see the action, put your hand up to marshal.

E-mail mainlandwinching@gmail.com

<https://www.facebook.com/4x4eventschch/>

Northern Zone Clubs

Anything underlined will either open up in your internet browser or open your email to send the person a query.

If your Club logo has been updated, can you send a copy of it to editor@nzfwda.org.nz please.

As Clubs have AGMs please send the NZFWDA National Treasurer (treasurer@nzfwda.org.nz) an updated list of your President, Secretary, Treasurer and NZFWDA delegates details as these are vital in communicating with your club.



auckland4wd.org.nz

Bay of Islands 4x4 Club



bop4x4club@gmail.com



cozzie4x4@gmail.com



hunt2@windowslive.com



www.geyserland4wd.co.nz

Kaitaia 4WD Club Inc.

Kaitaia4x4club@hotmail.com



Kaimai 4x4 Club



www.kc4wd.co.nz



www.lroca.org.nz



manukau4wd.org.nz



norwestohv.org
secretary@norwestohv.org



admin@nzjeepclub.co.nz



rodneymoffroadclub@gmail.com



Sulphurcity4wheelers@outlook.com



United 4WD supporters
u4wd@nzfwda.org.nz



secretary.waik4wdclub@gmail.com



Whangamata4x4@gmail.com



whangarei4x4club@gmail.com

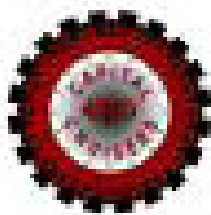
Wilderness Ridge Riders 4WD Club

Central Zone Clubs

Anything underlined will either open up in your internet browser or open your email to send the person a query.

If your Club logo has been updated, can you send a copy of it to editor@nzfwda.org.nz please.

As Clubs have AGMs please send the NZFWDA National Treasurer (treasurer@nzfwda.org.nz) an updated list of your President, Secretary, Treasurer and NZFWDA delegates details as these are vital in communicating with your club.



cruiser4wdclub@gmail.com



www.ccvc.org.nz

Featherston Family 4x4 Club



www.hb4wd.co.nz

Kapiti Family 4Wheel Drive Club

kapitifamily4wd@outlook.com



www.kiwi4x4.org.nz

Levin 4WD Club



www.m4wdc.org.nz



www.naki4wd.org



www.twincity4x4.co.nz



<http://wf4x4c.org.nz>



wellingtonjeepclub.co.nz
wjeepc@gmail.com



Southern Zone Clubs



www.4x4events.co.nz

Central Otago 4WD Club
co4wdc@gmail.com

Clutha 4WD Club



www.lrec.co.nz



marlborough4x4club.weebly.com



nel4x4@gmail.com



www.or4g.org.nz



shotover4wdclub.co.nz

South Island Deaf 4x4 Club
s.i.deaf4x4club@hotmail.com

Southland Land Rover Club
Explores The World & Do What You Love

southlandlandroverclub.co.nz



Kids Page

Can you spot the 7 differences?

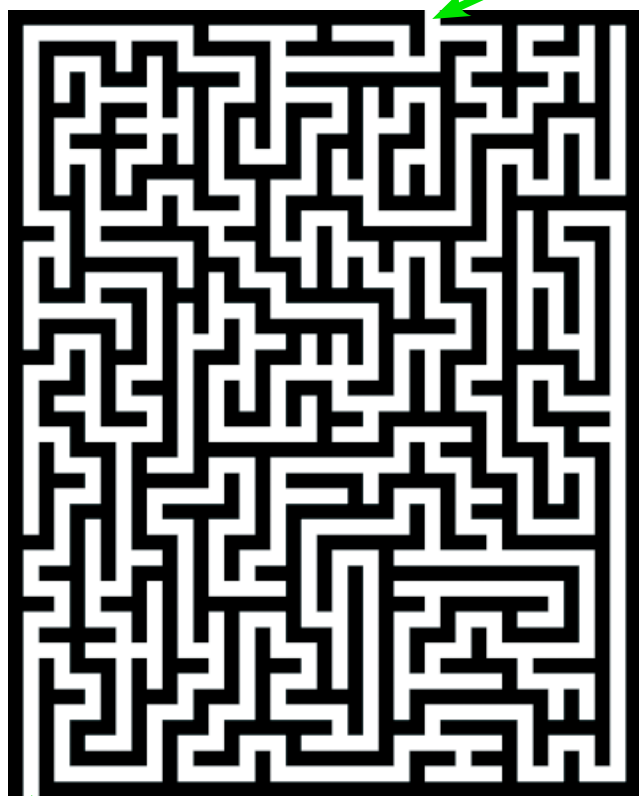


Royce Graham, Rotorua Winch Challenge 2003



Royce Graham, Rotorua Winch Challenge 03

Can you get through the Maze? Start here



Exit

Bending Water

If you rub things together, electrons can move from one atom to another. Some atoms get extra electrons. They have a negative charge. Other atoms lose electrons. They have a positive charge. When charges are separated like this, it is called static electricity.

What you need:

- a hard rubber or plastic comb
- a sink and water tap faucet.

What to do:

1. Turn on the tap faucet so that the water runs out in a small, steady stream, about 1/8 inch thick.
2. Charge the comb by running it through long, dry hair several times or rub it vigorously on a sweater.
3. Slowly bring the comb near the water and watch the water "bend."

What happened:

The neutral water was attracted to the charged comb, and moved towards it.

NZFWDA YOUNG DRIVER OF THE YEAR CUP

2008-09	Mitch Seymour	2013-14	Renee Harrison
2009-10	Martin Rivers	2014-15	Rachel Buckthought
2010-11	Ash Senior	2015-16	Daniel Howat
2011-12	Shaun Robertson	2017-18	Aaron Tosland
2012-13	William Sturme	2018-19	Caitlyn Thomsen

To nominate a Young Driver in your Club, contact the NZFWDA National Secretary secretary@nzfwda.org.nz
Entries must be received by 31st January.