



Trail Torque

The official Newsletter of the New Zealand Four Wheel Drive Association

September/October/November 2021

Waikato 4x4 Club 50th Anniversary

CCVC on ALJAZEERA

Member Survey Results

12 hour Pairs Winch Challenge

Plus lots more...

Established in 1974,
the objective of the
Association is to
further and improve
Four Wheel Drive
activities in NZ.



As a member of the NZFWDA, you
become an integral part of this effort
to ensure that present and future
generations can continue to enjoy
our country in four wheel drive
vehicles.

Postal Address:

New Zealand Four Wheel Drive
Association Inc.
PO Box 90960,
Victoria Street West,
Auckland 1142

NZFWDA ONLINE:

www.nzfwda.org.nz

FACEBOOK:

<https://www.facebook.com/NewZealandFourWheelDriveAssociationInc>

Deadlines for Trail Torque Submissions

DEC/JAN/FEB 2022

DEADLINE: 26th November 2021

OUT: 12th December 2021

MAR/APR/MAY 2022

DEADLINE: 27 February 2022

OUT: 14 March 2022

JUN/JUL/AUG 2022

DEADLINE: 3 June 2022

OUT: 19 June 2022

If you would like to share your Club's
achievements in Trail Torque, send
them in to editor@nzfwda.org.nz

Inside this Edition

PAGE 6



PAGE 9



NZFWDA contact details	2
Deadlines for Trail Torque Submissions	2
Videos available on Members Portal	3
New Submissions Page on TidyHQ.....	3
Land Access Roles	3
NZFWDA Member Mini Surveys #1-3	4-5
Letters to the Editor	5
Maratoto Check	6
NZFWDA Life Members.....	6
CCVC on ALJAZEERA	7
Muriwai Beach Update	7
New LVV Certification Electronic Data Plate	8
New Zealand Car Construction Manual Chapter Updates	8
Advertising in Trail Torque	8
Jocks Baby the LJ50 Suzuki.....	9
Consultation for Territorial Authorities.....	9
Waikato 4x4 Club 50th Anniversary.....	10-11
12 Hour Pairs Winch Challenge	12
Track Working Bees	13
Upcoming 4x4 Events/Trips/Runs/Important Dates.....	13
4x4 Trials Competition Committee - Meet the Team.....	14
Executive Reports	15-17
Northern Zone Clubs	18
Central Zone Clubs	19
Southern Zone Clubs.....	19
Kids Page	20
NZFWDA Young Driver Awards	20

THE NEW ZEALAND FOUR WHEEL DRIVE ASSOCIATION

*Values the highest safety standards before, during and after all 4WD activities.
Endorses respect and care while participating in 4WD activities in the Environment.
Acknowledges the contribution of its members and their values.
Values and respects land owners and land users.
Encourages non-discrimination of all participants.*

ARTICLES AND LETTERS NZFWDA DISCLAIMER.

The views and opinions of contributors to this publication are those of the author(s) and unless stated otherwise do not necessarily reflect the opinions or views of NZFWDA. Responsibility for the views and information in articles lies with the author(s) concerned. The NZFWDA and its editor reserve the right to edit abridge or discard any or all material submitted for publication. **Copyright.** The New Zealand Four Wheel Drive Association claims copyright and the right to be acknowledged as the publisher of Trail Torque and its contents.

Trail Torque is produced four times a year and delivered via the NZFWDA Membership email database.

Available in the Members Portal on Tidy HQ

Southern Four Wheel Drive Association have kindly granted NZFWDA access to, and use of their Educational Videos. Each one is produced with volunteers through their SFWDA Grant Program which is focused on supporting their core mission of Education for the OHV community as a whole. You can check some of them out under the videos menu option in the Members Portal on TidyHQ (<https://nzfwda.tidyhq.com/public/pages/sfwda-training-videos>) or <https://www.sfwda.org/education>



The 5 Principles for Responsible OHV Recreation. Tread Lightly!

1. Travel Responsibly
2. Respect the Rights of Others
3. Educate Yourself
4. Avoid Sensitive Areas
5. Do Your Part



New Submissions Page

Some members may not be aware that the Association makes submissions to various organisations including Regional Councils, District and City Councils, DOC. These are usually in support of land access.

We now have the ability to share our recent submissions with our clubs and members, both so you can see what's happening and also use them as guidance for your own submissions.

There is a new "Submissions" page in the Members' Portal on TidyHQ with the most recent submissions - it can be found under the Land Access menu item.

As further submissions are made, we'll add them to the Submissions page.

Clubs: Can we publish your submissions there too? Do you have any you can send us? If so, please forward them to access@nzfwda.org.nz.

Land Access Roles

The roles re-jig approved at this year's AGM has a strong focus on increasing our horsepower on land access.

We should now be able to build on the excellent work done by various officers and club members to date and enable us to be even more proactive and to ensure we make submissions to DOC and Councils etc wherever possible.

So please, if you have land access issues or opportunities, where these can be shared beyond your club or you'd like Association support, just get in touch with your Zone PRO.

Duties of the 3 Zone PROs are now defined as:

- Maintain an awareness of land access matters in the Zone, including monitoring official websites for issues and any

submission opportunities.

- Write submissions at a Zone level (or facilitate and ensure that such submissions are written).
- Liaise with the National Public Relations Officer and National Land Access Officer.
- Report regularly to and keep informed their Zone President and National PRO and National Land Access Officer.

Duties of the new National Land Access Officer are:

- Disseminate all information of relevance on land access matters to Executive members, Zone Committees, Clubs, and members as appropriate.
- Liaise with and coordinate negotiations with government departments and national

lobbying groups, etc., regarding land access issues.

- Oversee Zone land access matters.
- Write submissions at a national level (or facilitate and ensure that such submissions are written) and oversee and assist Zone Officers in writing submissions at local levels.
- Manage the Association's register of Roads of National Importance (RONI).
- Present an Annual Report to the AGM.

The full list of role duties is contained in a document in the "Other" section at the foot of the Online Document Library page in the Members' Portal on TidyHQ. This will be updated by the Exec from time to time.

NZFWDA Member Mini-Surveys #1-3

NZFWDA comprises members and member Clubs from which a bunch of members are routinely elected as Executive representatives of members.

We want to be an organisation that provides a means for members (and their respective Clubs) to have some collegial "mass", common values around our sport and recreation activities, and, most importantly, to get out and about in our 4WDs.

Behind the scenes there has been significant effort by the Association Executive contemplating "Keeping the Association Relevant". This was first raised as a strategy during the 2017

AGM since which time the Association has been "slam dunked" by other demands (HSCA / H&S Guidelines, the GWRC Court Case, new Event Planning Guidelines, replacement of membership database, Constitution review and modernisation / Remits, Regulations, etc).

A new Executive Sub-committee has now been formed to continue work on the analysis of NZFWDA Strengths, Weaknesses, Opportunities and Threats (SWOT) that was commenced late 2020.

As one of the first priority actions out of the SWOT, earlier this year the Association commenced the first

of a series of mini surveys with the intention that these would help inform us of members needs and wants. The high level of responses from members was gratifying, showing that by and large our members care about the Association and are keen to help with improving it.

The mini surveys are intended to test the relevance, and delivery, of things done by NZFWDA for benefit of members. In simple terms the colour-coded responses below indicate green as positive, yellow as ok / marginal, and blue as "Houston, we have a problem".

The first survey asked about members' awareness of various projects the Executive had undertaken over the past few years. These projects were perceived by the executive as being critical to the continuance of our collective 4WD sport and recreational activities.

Mini survey #1 asked about members awareness of various projects undertaken by NZFWDA:

93.4% Publication of Trail Torque	58.8% GWRC Court case	46.8% Event Planning guidelines	40.2% Members only portal in TidyHQ
61.4% Health and Safety Guidelines	52.4% TidyHQ membership database	46.3% Remits and Regulations	15.1% On-line document library in TidyHQ

Mini survey #2 asked about NZFWDA membership benefits:

64.0% Friendship and Comradeship	28.5% Giving back to community	12.8% Nothing
61.6% Opportunities to 4WD	10.5% Financial	Green is positive, Yellow is ok / marginal, Blue is "Houston, we have a problem".

Mini survey #3 asked about how members preferred to receive information from NZFWDA:

By Email

94.8%

“yes”

Public Page:
nzfwda.org.nz

18.8%

“no / no opinion”

81.2%

Members' portal:
TidyHQ

16.1%

“no / haven't tried”

83.9%

Do you know
to log-in?

44.0%

“no”

56.0%

Do you have
difficulty with log-in?

6.9%

“no / haven't tried”

93.1%

Via Facebook page

29.7%

“no / no opinion”

70.3%

91.2%

Do you receive
Trail Torque?

90.5%

Do you read Trail Torque?

83.8%

Is Trail Torque useful
to you?

More mini surveys are on the way and each and every response will be collated into the SWOT analyses around what members want, what the Association is doing well, ok, or badly, and informing us of the opportunities to fix, change, abandon, or continue, in accordance with our members' needs.

More to follow including analysis of the current round of surveys that have just commenced about “4WD on a beach”.

Already several actions identified in the first round of the SWOT have been

either completed or started. These were the Executive roles re-jig, more detailed definition of officer roles, budget, consolidation of National, Zone and Comps financial reporting, finish and publish the RONI (Roads of National Importance) Register, and roadshows to explain the remits and regulations and obtain member and club feedback, which was acted on.

The Executive is confident that the SWOT exercise has been a valuable addition to the work done over the last 4 years on the strategy of “Keeping the Association Relevant” and that

there will be value in continuing with it.

To the unknown respondent who commented to question 5 of the beach survey “Are you really going to do something? Will you actually read this?”; our answer is “yes”.

Neville Dunton
President, NZFWDA Inc

Letters to the Editor

Letters to the Editor should be sent to editor@nzfwda.org.nz. Letters should not exceed 200 words and should carry the author's signature, name and residential address and a phone number so as to enable their authenticity to be confirmed. Letters may not be formally acknowledged and may be edited, abridged or discarded at the discretion of the editor.



MARATOTO CHECK

As the current NZFWDA Northern Zone PR person, I'm again involved with the Maratoto track and on Saturday 31 July I visited that track along with Ces Horan and Steve Morley. The aim was to assess what maintenance will be needed before the summer opening to the public.

We took just two vehicles in, a 'bush truck' Nissan and my Jeep Wrangler. I do confess that I walked the final distance from the first Loop gate to the river, as the track condition from there is not good, with deeply rutted clay and deep waterholes.

It was evident that some vegetation cut back is needed and that's planned for 2nd October (volunteers welcome) with the intention that soon after, a digger will go in to address many water management issues. That will include remedying those major holes up near the Tairua River that have formed in an area of peat.

In the meantime, there are H&S plans to be drafted for the workdays and a separate maintenance plan for the 2021/ 22 season.

Peter Vahry



LIFE MEMBERS OF THE NEW ZEALAND FOUR WHEEL DRIVE ASSOCIATION.

Awarded 2021 - Neville Dunton
 Awarded 2021 - Mel Street
 Awarded 2018 - Russell Quin
 Awarded 2017 - Bob Holmes
 Awarded 2017 - Eileen Revell (nee Austin)

Awarded 2017 - Steve McMinn
 Awarded 2016 - John & Nonnie Cowper
 Awarded 2015 - Ces Horan
 Awarded 2015 - Kath Jaggard
 Awarded 2011 - Peter Vahry

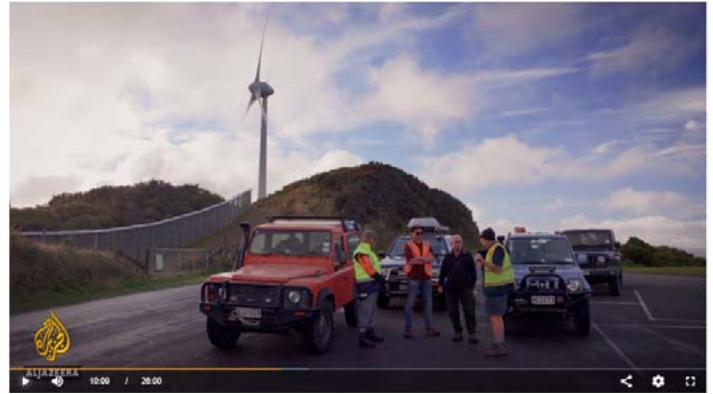
CCVC features on ALJAZEERA

"Aljazeera's 101 East programme, showcased NZ's "big, hairy audacious" predator free efforts this week, and featured Capital Kiwi's community trappers. Wellington Cross Country Vehicle Club's Barry steals the show, pulling a stoat from a CK trap with some BBQ tongs".

Check out the clip here (<https://www.aljazeera.com/program/101-east/2021/8/12/birds-on-the-brink>)
Fast forward to 10min 09 seconds.

We have been told it recently screened world-wide!

SOURCE: Capital Kiwi Facebook



CCVC hard at work and starring Barry Insull with a cameo appearance from Ian Hutchings.

Muriwai Beach

UPDATE BY John Hickey - Northern Zone President

Auckland Council called public meetings about its proposals to close the beach.

There were three public meetings in Waimauku (Kumeu), South Head and Muriwai Beach Surf Club. There seemed to be strong opposition across the community to a blanket closing of the beach, except for a few small interest groups. Auckland Council had a "Have your Say" website and on your behalf I made written Submissions. There was a subsequent meeting of Four Wheel Drive groups including local Zone Clubs, including Ben Blyth of Norwest Off Road, Rodney Off Roaders, Auckland Four Wheel Drive Club, Land Rovers Owners Club Auckland (my club), Muriwai Beach Four Wheel Drive Club (which seems to be an unincorporated group of locals) and Council representatives – I attended on your behalf.

A local interest group has been convened which includes, as four wheel drive representatives, Ben Blyth, Amber Harvey the President of Land Rover Owners Club, I nominated Peter Vahry as Zone Rep and also for Auckland Four Wheel Drive Club. In the meantime I wrote to all Four Wheel Drive Clubs in the area asking them to follow the rules for beach access.

I understand that the chair of the local board Phelan Pirrie is keen to close off the beach with gates, number plate monitoring and then proposes to charge a fee for access to the beach. I consider we should be opposing any

closing of the beach and opposing any gating arrangements. From my experience of the beach I would say that it would be difficult to close off and gates are likely to be an unnecessary waste of money. I suggest and the Zone may want to resolve to:

- (a) Opposing gates for Muriwai; and
- (b) Opposing number plate monitoring for Muriwai.

Auckland Council seem to be attempting to close the beach to all vehicle access, relying on objections of a small group of people:

- (i) About the behaviour of another small group of people;
- (ii) Without consideration and attempts to use other alternatives;
- (iii) The cost of fencing off the dunes may be less than the costs of security gates and security fences and electronic monitoring equipment.

(Recently someone who works for New Zealand Police, said to me that they believe that if the Police patrol regularly then often the patrols are avoided. However if Police patrol on a random basis without warning often that leads to better observance of the law, because people do not know when they will be picked up for doing something wrong.)

Several delegates from outside the Auckland area took the view that if Auckland Council could do this then there is the prospect for other areas outside Auckland and that we all

needed to work to oppose it. Peter Vahry proposed at the zone meeting that we purchase a mobile billboard on a trailer as a demonstration of advocacy and a need to be seen to be doing something. There was considerable discussion about this and the Zone agreed to contribute towards the cost of a billboard of \$2,000 and to seek a contribution from clubs.

The Zone subsequently resolved (subject to formal approval at the next Zone AGM) that:

1. It supports:
 - (a) The education of users.
 - (b) Responsible use by all user groups and individuals including Four Wheel Drives, Horse Riders, Motor Bikers, Fisher people and Kite Surfers etc.
 - (c) Proper use of the beach;
 - (d) Proper legal enforcement on Muriwai Beach;
2. It opposes:
 - (a) The closing of Muriwai Beach;
 - (b) Gates; and
 - (c) Number plate recognition technology.
3. It agrees to contribute towards signage to promote responsible use by all users up to the value of \$2,000. Clubs may also contribute extra to this fund as evidence of their support and any such contributions will be appreciated.
4. It requests the Auckland Council provide alternative Four Wheel Drive sites.

LVV Certification plates replaced by Electronic Data Plate (EDP)

After serving its intended purpose well for nearly 30 years, the engraved aluminium LVV certification plates were replaced by the new Electronic Data Plate (EDP) system on the 1st of February 2021.

A Brief Overview...

- Size: The EDP is small (about the size of a fifty-cent coin).
- Installation: Quicker to fit, only one attachment point through the centre.
- Information storage: Large amounts of data to be stored and accessed, including detailed information and extensive photos.
- Information access: By using a smart phone or tablet with an RFID/

NFC reader.

- Remote activation: After fitment at final inspection, the EDP can be remotely activated by LVVTA once the LVV certification has been processed.
- Updates: After a vehicle is inspected by an LVV Certifier, the EDP can also be updated remotely.
- Security: The EDP has undergone extensive security testing; only LVVTA's Plating Team can edit the stored information.
- Existing engraved LVV certification plates: These do not need to be replaced with an EDP unless the vehicle is further modified.
- Changes to WoF/CoF inspection:



For EDP-fitted vehicles, the AVI must ensure the presented vehicle matches the information and photos stored in the system, and if any discrepancies are identified the vehicle must be failed and referred to an LVV Certifier.

Read the FULL article here: https://www.lvvt.org.nz/documents/newsletters_pub/LVVTA_Newsletter_2021_January-June.pdf

New Zealand Car Construction Manual (CCM)

Several chapters of the New Zealand Car Construction Manual (CCM) have been updated recently. As well as updates to technical information, the chapters have been amended in line with the 'Next Generation' format.

Information relating to the 'Next Generation' documents can be found [here](#).

Information detailing the individual changes in each chapter can be found by clicking on the links below:

Information Sheet #06-2021:

[Engine and Drivetrain Conversion](#)

Information Sheet #05-2021:

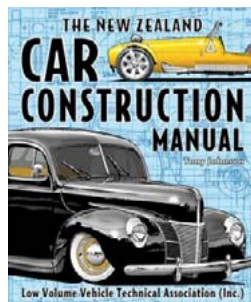
[Chassis Modification and Construction](#)

Information Sheet #04-2021:

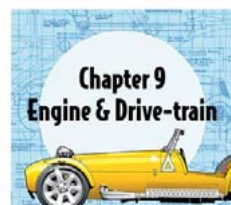
[Fuel Systems](#)

All CCM chapters (including the latest updated chapters) are available for free download on the LVVTA website, and can be printed to replace the previous versions in your manual.

If you would prefer to purchase a hard copy of the updated chapters, please contact nikki@lvvt.org.nz.

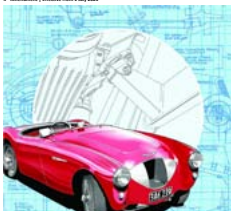


New Zealand Car Construction Manual



Helping New Zealanders Build & Modify Safe Vehicles

New Zealand Vehicle Standard
45-40(04)
Engine & Drive-train
4th Amendment (Effective from 1 July 2021)



Helping New Zealanders Build & Modify Safe Vehicles

New Zealand Vehicle Standard
45-40(04)
Chassis Modification & Construction
4th Amendment (Effective from 1 July 2021)



Helping New Zealanders Build & Modify Safe Vehicles

Club H&S Responsibilities

Trip Leaders and all other club officials have H&S responsibilities. The NZFWDA recommends that every affiliated 4wd Club:

- Adopts its own Health and Safety Policy.
- Adopts its own health and safety processes, documents and forms.

Advertising in Trail Torque

Quarter Page	(94mm x 135mm)	\$150
Half Page	(190mm x 136mm)	\$300
Full Page	(190mm x 278mm)	\$600

These prices are per edition of NZFWDA Trail Torque and do not include GST. Invoices are sent yearly and bookings must be made for a minimum of one year. Advertisements must be received copy ready and sent as jpeg or pdf to: Bobbie Kincaid: editor@nzfwda.org.nz All advertising ("advertising") in Trail Torque is on the basis that

1. The Editor at the Editor's discretion may accept or reject any advertisement without giving any reason.
2. The New Zealand Four Wheel Drive Association ("the Association") does not endorse or recommend or warrant any advertiser or advertising. The Association at its absolute discretion reserves the right to at any time accept or refuse any advertisement or advertising.
3. The Advertiser must ensure and warrants to the Association that all relevant laws and advertising guidelines are observed for the advertising.





This is the story of a little green LJ50 Suzuki Jimny registered NZ new 1978 Jock Fawcett from Nightcaps, a small town in Southland, bought this little vehicle brand new and he was so proud of it the townsfolk named it "Jocks Baby".

Several years later ill health saw Jock and his baby head up to Nelson to reside with family where afterwards, he sadly passed away. The little LJ50 had to be sold and in 1985 was advertised on Trade Me where eagle eyed Steve McMinn saw it.

Steve had the forethought to realise that there weren't many original tidy condition Suzukis left all having been knocked around as farm or bush trucks or repowered with 1200 Datsun or Corolla motors. Steve contacted the family and soon we were enroute to Nelson to purchase "Jocks Baby". Steve drove it to Picton then had a trailer waiting in Wellington to transport it back to our home in Auckland.

It was always kept indoors in his large workshop and even covered with a duvet at night to keep the dust off. Steve did drive it and was often seen on AFWD Club family days, the Christmas picnics and also at 'show and shine' days and the 4WD show at Clevedon.

For those of you who weren't born until after this little Suzuki came off the production line, the Suzuki LJ50 or SJ10, as it was known overseas, was powered by a 550cc 3 cylinder 2 stroke engine with a 'massive' 52Nm of torque. It had a transfer case aligned to a 4 speed gearbox which gave a selection of 2WD and 4WD H and L. A wheelbase of only 1.95m L and 1100mm wide diffs. Weighing

only 740 kgs and shod with 16inch x 750 Dunlop tyres, it would go almost anywhere thanks to it's small size and light weight and if it did get stuck, a bloke or 2 in each corner soon had it extricated.

In 2016 Steve retired and he and Barbara sold up and moved to Taumarunui to live in a large house with heaps of garaging which meant the LJ50 would still be stabled in the dry.

In 2017 Steve sadly passed away and Barbara was left with all his toys and other than a few trips to the letterbox (we do have a long drive), it stayed under the duvet. Now 3 yrs on it is time for me to downsize my home, my garage and the toys and regretfully the little LJ50 Suzuki will have to go!

In March 2021 the Wilderness Ridge Riders 4WD Club did a South Island tour and after 3 weeks of driving tracks and back roads we ended up in Blenheim, with a day to rest up before catching the ferry and driving home to our various locations in the North Island. To fill in the day we visited the Omaka Classic Car Museum, I walked in and went WOW!

To cut a long story short, lots of investigative homework and armed with a name and contact details I returned home then set about negotiating a deal for the LJ50 Suzuki. Like all museums they work to a tight budget, but for me it was more about getting the still mint condition little Suzuki somewhere that everybody could appreciate it for what it is.

So next time you are passing thru Blenheim stop off at the Omaka Classic Car museum and say gad'y to "Jock and Steve's Baby".

Consultation for Territorial Authorities

We are still keen to receive information from anyone about any consultation opportunities that have come up.

This is mainly so that the NZFWDA can make submissions, which we can only do if we're aware of the opportunity.

All our members will be able to see the open consultations that we're aware of and, hopefully, who is working on submissions when they log in to TidyHQ.

The consultations we're talking about are where a city council, district council, DOC or the Walking Access Commission or anyone else has drafted some document that is open for public consultation. These are usually management plans of some form.

Our interest is mainly anything to do with land access. On the one hand it's important to take every opportunity to suggest amendments or additions to these documents to allow or increase opportunities for access. And on the other hand to object to anything that threatens our existing access.

Please send any information about consultation opportunities to access@nzfwda.org.nz

Health & Safety Risk Management

Risks and hazards are part of the environment our members choose to be in. As such IDENTIFYING AND THEN MINIMISING AND CONTROLLING the hazards will be the most likely route to managing everyone's health and safety.

WAIKATO FOUR WHEEL DRIVE CLUB 50th Anniversary

WORDS BY: George Palmer
PHOTOS: Bob McDell, Steve Whitton,
Naomi Laslett, Francine & Rachel.

This year the Waikato Club is celebrating its 50th anniversary.

It was formed in June 1971 by a group of enthusiasts and friends with the assistance of the Auckland Four Wheel Drive Club, to promote recreational four wheeling by organizing rally's, trials and off road trips.

Easter 1974; the Club was involved in the formation of the NZFWDA, hosting the inaugural AGM followed by a night and day rally at Rangitikei on the Taupo and Napier highway. This was well attended with 60 plus vehicles, it is reported that the local pub was drunk dry over the weekend!

One of the first runs organized by the young Club was to Karakariki which then became their home.

In the mid 80s a Club hut, "The Sheraton", was added. It is a converted hay shed with hot and cold running water, a sleeping area and a large indoor bbq fire in the lounge. This has become the Clubs focal point for social gatherings and camping.



Sheraton 2021

Pirongia 1971



Sheraton Spit Roast 1988



Santa at the Sheraton



Sheraton Campout 1988

Sheraton 2020



Hard Recovery 19th June



Over the last 50 years the Club has organised many successful rally's and trials and is still active in this field with a biannual trial held at Karakariki.

There are a few early members along with a number of second and third generation family members of the originals still actively involved in the Club.

Club runs are held monthly and a number of members compete in the National Trials competitions with some success, number 1 in 2020-21 and the winner of the Suzuki Extreme for 2021.

There will be an informal get-together for members, past members and friends at the Club hut "The Sheraton", Karakariki on 27 November 2021.

For more details contact Chris McDell
ckmc77@gmail.com

Making a track



Where to next?



Lunch time



Karakariki Christmas 2018



12 HOUR PAIRS WINCH Challenge

ARTICLE BY Matt Sterling

The tradition of Queens Birthday weekend being on the calendar for those into winch challenge is still going strong with the Levin 4x4 club now hosting the event previously run by the Kiwi club. The event was cancelled in 2020, so this year was a step up from 2019 with more teams, and more tracks providing an action packed weekend, and all teams going for broke. The event consisted of 13, two vehicle teams attempting as many of the 17 stages as they were able to in the 12 hours on Saturday with a handful of speed stages on Sunday. Points are given for each stage completed with teams reporting back to base to be signed off and given their next stage.

3rd place was "Balls Deep Racing", the team of Robin Scaife, and Paul Kelly, competing alongside Fraser Hyde and Rachel Duncan. They made excellent time through the stages but a swivel hub failure on Hyde's buggy in the middle of the day put him out of action. Leaving Scaife to complete the rest of the stages without his partner, which only gave them half points.

2nd place was team "Carbon Killers", Stephen Reed and Steve Green with Aaron Smythe and Jayne Wilson. They fought their way through 13 of the 17 stages, finishing their 12th stage with only minutes before the 8pm cut off. This made them the final team to return at the end of the night, and the Yellow Patrol of Smyth's was showing its battle scars by the end of the weekend.

1st place went to the "Foot Flat Zooks Racing" team of Lee Roebuck and Matthew Sterling, paired with Michael Duncan and Brayden Biddington. They had a very steady day, with no serious issues until the final stage where Duncan's winch motors failed due to low voltage. They still managed to complete all 17 stages with little time to spare, giving them a commanding lead on the competition before the speed stages.

We would like to thank our sponsors Force4, G Guys, ABC Building contractors, Castrol, Repco, Mana Cruising club, Devon Patterson Flooring, and Sunflower Designs for some excellent spot prizes. We would also like to thank all the competitors, as well as all the club members who made it happen.



1st place team of Lee Roebuck (front), with Michael Duncan (behind)



The 2nd place team of Aaron Smythe (front) and (behind) Stephen Reed



3rd place Vehicle with Robin Scaife, and Paul Kelly



3rd place vehicle of Frasier Hyde

4x4 Events/Trips/Runs/Important Dates

Events and Trips Disclaimer. Care has been taken in entering details of these events. However NZFWDA does not take responsibility for any inadvertent inaccuracies or subsequent changes made by the event organisers. Trips and events will normally be hosted and organised by a Club or Clubs and not the Association itself. All events, trips and runs are the responsibility of the hosting Club. Potential participants should contact the relevant event organiser or Club. Email events to editor@nzfwda.org.nz

Anything underlined will either open up in your internet browser or open your email to send the person a query.

19 SEPTEMBER 2021

MAKAIRO TRACK WORKING BEE. Meeting time 9.00AM on SH2 Mangatainoka by Tui Brewery. BBQ Lunch supplied. What to bring Track clearing gear, chainsaws (safety gear) scrub bars, spades, picks and man power. Contact john.vruink@gmail.com

2 OCTOBER 2021

MT EGMONT 4WD CLUB PAIRS EVENT. Ninth year running! 300 Lower Durham Road, Inglewood. 9am Start. They are testing online ticket purchases via Eventbrite. Cash sales at the gate - Family (2 Adults, 3 kids) \$20. Adult (15 years and older) \$10, Child (5-14 years) \$5. No dogs or alcohol. Competitors can get entry forms from Rachel rachel.buckthought@hotmail.com Keep an eye on their facebook page for any developments relating to the current covid alert levels.

2 OCTOBER 2021

MARATOTO (WHANGAMATA) TRACK WORKING BEE. As it is on DOC managed land, no chainsaws are allowed. The NZFWDA have a management agreement with DOC on this route, which includes ongoing maintenance. If you can help, contact natlpro.nzfwda@gmail.com

24 OCTOBER 2021

NATIONAL 4X4 TRIAL 2021-2022 SEASON. Round 1: Eastern Bay Twin Diff Club. See www.nz4x4trials.co.nz for more information.

31 OCTOBER 2021

MURIWAI BEACH CLEAN UP. Auckland 4WD Club and Land Rover Owners (Auckland) are working with Auckland Council Rangers to again clean up. Others are welcome, Contact natlpro.nzfwda@gmail.com

20 NOVEMBER 2021

NATIONAL 4X4 TRIAL 2021-2022 SEASON Round 2: Wanganui 4WD Club See www.nz4x4trials.co.nz for more information.

27-28 NOVEMBER 2021

42 TRAVERSE WORKING BEE. There is a cut back planned with DOC on the 42 Traverse and support from the 4WD community is welcome. The main day will be the Saturday. More information at <https://www.friendsof42traverse.nz/news.html> This is an iconic 4x4 route that we must maintain to retain access.

22 JANUARY 2022

NATIONAL 4X4 TRIAL 2021-2022 SEASON Round 3: Mt Egmont 4 Wheel Drive Club. See www.nz4x4trials.co.nz for more information.

31 JANUARY 2022

DEADLINE FOR RECEIPT OF REMITS. Constitution Remits must be sent to the National Secretary by this date. Email secretary@nzfwda.org.nz

31 JANUARY 2022

NOMINATIONS for Young Driver close. Send entries to the NZFWDA National Secretary secretary@nzfwda.org.nz

12 FEBRUARY 2022

NATIONAL 4X4 TRIAL 2021-2022 SEASON Round 4: Waikato 4x4 Club See www.nz4x4trials.co.nz for more information.

28 FEBRUARY 2022

DEADLINE for Remit Subcommittee to submit remits to Executive.

12 MARCH 2022

NATIONAL 4X4 TRIAL 2021-2022 SEASON Round 5: Counties 4 Wheelers See www.nz4x4trials.co.nz for more information.

APRIL 2022

NATIONAL 4X4 TRIAL 2021-2022 SEASON Round 6: South Waikato 4x4 Club See www.nz4x4trials.co.nz for more information.





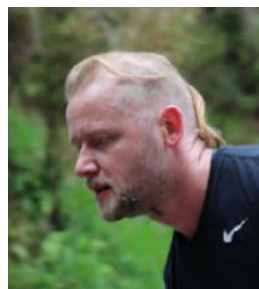
Scott Biggs
National Competitions Officer (NCO).
Organising events and other inquiries.



Daniel Morris
Secretary.
General inquiries.



Rachel Lobb
Treasurer.
Payments & license applications.



Phil Shailer
National Scorer.
Scoring disputes or inquiries.



Ernie Powell
Northern Zone Steward.
Course design and trial management.



Bruce Gilmore
Central Zone Steward.
Course design and trial management.



Tom Baeriswyl
Northern Zone Scrutineer.
Vehicle construction inquiries and interpretations.



Sam Thomsen
Central Zone Scrutineer.
Vehicle construction inquiries and interpretations.



James de Cleene
Central Zone Scrutineer.
Vehicle construction inquiries and interpretations.

2021-2022 NATIONAL 4X4 TRIALS COMPETITION CALENDAR

Round 1: E.B.T.D.C.
24 October 2021
Whakatane Region

Round 2: Wanganui
20 November 2021
Turakina

Round 3:
Mt Egmont
22 January 2022
Taranaki Region

Round 4:
Waikato
12 February 2022
Hamilton Region

Round 5:
Counties
12 March 2022
Ohinewai

Round 6:
South Waikato
April 2022

Sub-Committee

Members of the sub-committee assist the Competitions Committee in focused areas of related to the sport.



Scott Biggs
Mentorship.



Shayne Towers
Marketing.



Philip Walton
Junior Class Development.



Daniel Howat
Website Development.

Check out all the information on the NZ 4x4 Trials website and facebook page by following these links...

<https://nz4x4trials.co.nz/>

<https://www.facebook.com/nz4x4trials>



President Report

Neville Dunton - Email: president@nzfwda.org.nz - Phone: 07 578 2689 - Mobile: 027 446 5634



Over the years I have played around in many different 4WD trucks from a 1942 GPW Jeep, several Patrols, Land Cruisers, BMWs, a Cummins powered Ram, and a number of home built comps trucks. However, my choice of tough truck has been a TD42 GQ Patrol and I have had a fair number of those. So, it was with great joy that late last year I found myself another GQ.

My good mate Shane has helped me build quite a number of trucks over the years so his workshop in Taupo was an obvious choice to undertake the transformation from stock to tough. It took a few months and quite a few bucks to finish and lots of expertise from the Taupo team. We thought we had done everything right but the new tough clutch wasn't up to scratch and that necessitated fitment of a larger diameter clutch system capable of handling up to 1,000NM of torque.

Since completion I have had only a couple of away trips; first to the last AGM which allowed a bit of a shake down play in the Akatarawas. This trip was hosted by CCVC and our particular group was led by Dave DeM who did a great job as trip leader. I also was able to confirm that Dave's beat up tough

truck GQ was one that I had owned and modified some 18 years ago! I was pleased to see it still performing as it was designed to....thanks to Dave for showing us around and to CCVC for a great weekend!

My second away trip was to attend the Southern Zone AGM in Ashburton. A quick return run of just under 2,500kms over 5 days with a day of R&R up the Wilberforce River unfortunately deferred as that weekend was when Westport and the Westcoast were flooded; river levels on the east coast were also many metres above normal. Nonetheless the truck got a wee workout in Mid-Canterbury Club's "playground", but I needed a winch recovery after my own winch failed (since discovered the remote has two batteries and I had only replaced the visible one).

As I was lined up for the ferry crossing to Picton I was approached by a chap who was clearly heading off on a 4WD adventure. Turned out he and a few mates were heading down to try some mid-winter 4WD trails including the Macaulay Hut track. I was a bit surprised they were continuing without getting some local knowledge and offered to give them contact details of some

NZFWDA members down that way. We exchanged details and later that weekend I followed thru on my promise only to discover three of their trucks had come to grief on the Macaulay and they were holed up in Tekapo working out how to get roadworthy again (one had rolled). I guess the moral is to know where you are going, know what the terrain might throw at you, and perhaps seek local knowledge before going. Membership of your local 4WD Club and NZFWDA is a great place to start...

I have another SI adventure planned for early 2022 preceded by a week of short side trips as we head down to Cromwell.

As I write this piece we are again in Covid lockdown and it looks as though that might be for a wee while longer. Level 4 means staying in our "bubbles" and it definitely means no group activities. So, until we are free to again get out and about I wish you well; stay safe, and make plans, or perhaps get onto those deferred truck maintenance jobs!

Neville Dunton
President, NZFWDA Inc.

Southern Zone President Report

Bob Holmes - Email: szpresident@nzfwda.org.nz



Hi folks, my name is Bob Holmes and I am the newly elected Southern Zone President, my interest in all things 4WD orientated has come about thru my membership of the Land Rover Owners Club Otago (Inc) in Dunedin.

I'm pleased to have John McDonald on board as the new zone PRO who brings a wealth of knowledge to the position and Barb Adam as Secretary who will keep the lines of communication open, both John and Barb are members of the Mid Canterbury 4WD Club. Brent Wilson (Central Otago 4WD Club) who has worked tirelessly both at Zone and Association level over the last few years is staying on the zone executive in the new role of vice president.

Over the weekend of 17th – 18th July the Mid Canterbury 4WD Club hosted the Southern Zone AGM. It was great to have Neville Dunton, National President

take the time to join us, using the opportunity to do a north – south road trip down to Ashburton in his Nissan 4WD.

Saturday's planned trip did not quite go as planned due to the weather but the rain only made a late afternoon play at the Mid Canterbury Club grounds even more challenging, requiring a lot of winching as vehicles made their way round the purpose built course.

Six Clubs were represented at the AGM (5 onsite and 1 via zoom), a positive sign given the zone has been dormant for a number of years and enthusiasm from associated Clubs has been low. Attending the AGM was a proactive step by both the Clubs represented and the NZFWDA president.

I have touched base with all southern zone affiliated Clubs to allow us to have an up to date contact list, a good

starting point for us going forward and an opportunity to have a quick chat with the Club representatives. We are planning on starting zoom meetings to keep Club delegates / presidents updated on zone / association happenings as well the opportunity for a Q & A session for Club participants. I am also keen to get Club members viewing the NZFWDA TidyHQ portal that holds a vast range of information useful for Club members.

The Zone executive is keen to work with Clubs, listen to what they have to say and establish a good relationship for the good of our sport to ensure we can get out there and do what we enjoy with our 4wd's.

Bob Holmes
Southern Zone President

National PRO Report

Peter Vahry - Email: pro@nzfwda.org.nz

The winter months are always a bit of a raffle in regard to getting out and four wheeling and this one was no exception. One thing I did notice was that there seemed to be few media reports about four wheelers making messes or needing help.

There are quite a few pending issues around future access to public places such as beaches and although we can attend public meetings and respond to assorted surveys, those are usually only interacting with Council staff who can make 'recommendations' but rarely make the final decisions.

It is usually the elected Councillors who make those final decisions, especially if it involves modifying or creating a Bylaw. Maybe we, as a recreation, need to start communicating directly with our Councillors and reminding them that they are elected to represent their constituents who happen to enjoy a recreation that is growing in popularity. Some Councillors will be aware that the next election is only a year away on 8 October 2022.

If you are curious about council members and a few statistics, check out [https://www.lgnz.co.nz/assets/Elected-member-](https://www.lgnz.co.nz/assets/Elected-member-profile-2019-2022.pdf)

[profile-2019-2022.pdf](https://www.lgnz.co.nz/assets/Elected-member-profile-2019-2022.pdf) and the same website <https://www.lgnz.co.nz/local-government-in-nz/new-zealands-councils/> lists all the district boundaries and provides links to the relevant local authorities.

Usually by entering 'councillors' in your Council's website search box it will provide names and email addresses etc. for the region's representatives.

I know that we've got some talented IT people amongst our members, and I'd be curious to know of any 'free' letter generation apps that might be used to create and send letters via email to councilors and politicians?

In respect of 'communication' between the NZFWDA and our members, and vice versa, we have four main platforms, emails, the two websites www.NZFWDA.org.nz, the 'member centric' <https://nzfwda.tidyhq.com/> and a Facebook page <https://www.facebook.com/NewZealandFourWheelDriveAssociationInc>

In one of the 'mini surveys' earlier in the year, a majority preferred emails to them directly so that's how we'll circulate most directly relevant material to members. We

add items to the Facebook page that may interest the four wheeling community but don't always monitor it closely for responses.

On a personal note, it seems that my link to 4WD goes back a while. My father died a couple of years ago at 103 and as a NZ Air Force officer, he'd been seconded to the US forces in the Pacific during WW11. During the sorting of old photos, I spotted one that showed my father and a Jeep, both looking muddy.

Keep those tyres on the ground and respect the environment.

Peter Vahry
NZFWDA National Public Relations



My father is to the right of the photo, stooped in front of the Jeep



Northern Zone President Report

John Hickey - E: nthzpresident@nzfwda.org.nz - Mobile: 0274 531 247 - Home: 09 630 4904

Hi all, our last Northern Zone Quarterly Meeting was on 10 July 2021.

At the meeting we approved payment of the subsidy for delegates attending the NZ Four Wheel Drive Association AGM, as previously passed, at \$200 per delegate, is to be provided by the National Secretary. (This was intended to encourage and assist delegates in attending.)

Tech Park

My understanding is that following the accident at Tech Park a number of issues have been raised. Obviously our concern is for the person who was injured and her family. As practical matters we have also had to notify our insurers. At the Zone meeting I had to remind clubs that where there is money earned a club event may be regarded as an undertaking (a PCBU) under the Act. So even if not a business there could still be a prosecution by WorkSafe. So there needs to be an assessment of any risk, an assessment and a plan to minimise or avoid that risk.

Young Drivers

There was a discussion about underage drivers. The Association cannot approve

them. The law applies to everyone and vehicle owners have to comply. Vehicles need to check their own owners insurance policies because they will probably not cover underage drivers. So we all take the risk if we allow our children to drive...

Monitoring of Tracks

Peter Vahry suggested that we purchase a monitoring system to bury on tracks to count vehicle usage. He said that he had made enquiries about a TRAFx monitoring system (used by Auckland Council and was deployed at Muriwai Beach to get user numbers) it would cost about \$3,000. After discussions it was suggested that the zone ask the National Association to consider this. Ces Horan has suggested that we pass a motion of support for Bill Horgan at DOC for his co-operation with New Zealand Four Wheel Drive Association and our efforts to maintain Maratoto. We did this about the same time as other sections of DOC were criticised.

On personal matters I had to carry out some radiator repairs to my Series One. That means I took the radiator out. That means that I looked at some other work that needed to be done to take the vehicle back so that

it's more original (the hole for a capstan in the front chassis had been blocked when the chassis was converted for a Holden motor). Then I replaced the Holden with a Land Rover motor. The person organising the repair that suggested I remove the front grill. I removed the front grill and could see that there was some rust in some parts, so I have removed that for repair as well...

I have noticed that the price of old Land Rovers seems to be rising. I am told that there have also been increases in the price of old Nissan Safaris. Personally I regard that as a shame because it means that ordinary and younger members cannot afford those vehicles (and my dreams of a Skippy remain as a dream). However my youngest daughter Jessica wanted to take a Four Wheel Drive down to Mt Ruapehu for skiing so we are in negotiations for her to buy a vehicle and for me to take a share in it...

Whatever you are driving I hope you are having fun. Follow the rules and Stay safe during the lockdown

Regards
John Hickey
Northern Zone President

Central Zone PRO Report

John Vruink - Email: john.vruink@gmail.com



Here are the current track conditions which the public can gain access and with information I know about. Any updates on these tracks or any that I have not mentioned would be welcomed.

Sutherlands Track DOC land Wairarapa

Currently open with approved trip leaders running trips. Public have been accessing this track via a private farm with a member of the public being stuck overnight causing a police search and rescue call out. DOC have been talking about replacing a gate to control access but as yet this has not happened.

Odlins Road, DOC land, Akatarawa

The track up to Renata Saddle is getting tuffer with bigger ruts. The washout about 15 mins before Waitotauru Hut is driveable but be aware that after heavy rain it tends to wash out and the track will require a rebuild. The Skyline track is still drivable but winches are recommended.

Takapari Road, DOC land, Ruahines

Track is currently open but have noticed the track is getting a bit boggy in places. Have heard from a third party that a group called " Friends of the Ruahine " were pushing to have the road closed to vehicle access. This was held off from others within the group that wanted it open.

Red Rocks, Wellington South Coast, Public Road

Currently open 6 days of the week with the road closed on Sundays for walkers. Clarity has been sought from Wellington City Council over 4wd access to Red Rocks under Covid level 3. Their response included; "Current Government advice is to do low risk recreation activities to reduce the chance of needing to be rescued. Given the frequency of vehicles getting stuck at Red Rocks that then require others to rescue them the decision has been made to keep the gate closed until alert level 2".

North Range Road, Northern Taranaki, Public Road

Currently open. I have heard the ruts are getting a lot deeper and the track is going back to what it was like before the wind turbines were installed.

Vestas who are transporting the giant 55 metre long turbine to Mercurys Turitea wind farm have reached a deal with landowners to traverse North Range Road across private land and through established wind farms.

Of the 33 turbines in the northern zone, 26 have blades. Work on the southern 27 turbines is about to start soon. Not sure how this will affect access to this road.

Whangamomona Road

Stratford Council which proposed a bylaw for the road, which they had hoped to have in place by 1st July 2021 has not happened. The new timeline is to have funding approved this financial year for the bylaw, consultation and submissions in 2022, with the bylaw maybe in place later 2022, then they can invest funds into the repairs that are needed to the road.

Steve Bowden Roding Asset Manager has advise me at this stage the basis of the bylaw will cover items such as

1. The category of vehicles that can use the road.
2. The category of vehicles that are unsuitable for the road - 2 wheel drive cars, caravans, motorhomes etc
3. The ability to close the road through winter - 1 May to 1 October each year to allow maintenance to be undertaken.
4. Access for DOC and local farmers during the time the road is closed.
5. Some provision to recover costs to repair any damage to the road as a result of unlawful activity (ie not using the road as a play area) some legal advice/wording on this part of the bylaw.

6. And anything else that may come up though the consultation process'

The council would like NZFWDA to continue to encourage the non use of the track over the winter months from 1st May to 1st October. Not to use the road as a play area, but can still use the side tracks to play in. They consider this track as a valuable asset to the Stratford community and one that they wish to promote for tourism, as and when they have more visitors to the region. It will be a shame for it to be ruined by a few idiots and with the help from NZFWDA they hope to minimise this as much as possible.

Makairo Track, Northern Wairarapa, Unmaintained public road.

We have cleared about 3ks of this track with the next work party planned for 19th September.

It would be great to get more Clubs and their members involved in opening up this track. Contact john.vruink@gmail.com if interested in helping out.

McKenzie Trail, Foxton Beach.

Approved trip leaders can get permits for access to the Council land of this trail. The north end of this trail does get access by quads, trail bikes and the occasional 4x4. The landowner claims he owns the land to the high water line and has been known to request people to leave his land.

42 Traverse. DOC land, central North Island

This track is closed over winter from the 30th April to 1st December. The next maintenance trip for this track will be held over 27/28 November 2021. If you are able to help or require more information contact recreateby4x4@gmail.com

John Vruink
Central Zone PRO

2021/2022 NZFWDA Executive

The NZFWDA Executive are volunteers who administer the Association. Divided into three Regional Zone committees - Northern Zone (North Cape to Taupo), Central Zone (Taupo to Wellington), Southern Zone (the entire South Island) and a Competition Committee.

President - Neville Dunton

Secretary - Kath Jaggard

Treasurer - Joanna Lilford

National PRO - Peter Vahry

Membership Officer - Craig Lilford

National Events - Brian Howat

Land Access - Ian Hutchings

Projects - Grant Purdie

Systems - Max Wheatley

National Competitions Officer -

Scott Biggs

Southern Zone (SZ) President -

Graeme Thompson

SZ PRO - Brent Wilson

SZ Vice-President - vacant

Central Zone (CZ) President -

Brian Howat

CZ PRO - John Vruink

CZ Vice-President - Max Charman

Northern Zone (NZ) President -

John Hickey

NZ PRO - Peter Vahry

NZ Vice-President - Dan Barnett

Northern Zone Clubs

Anything underlined will either open up in your internet browser or open your email to send the person a query.

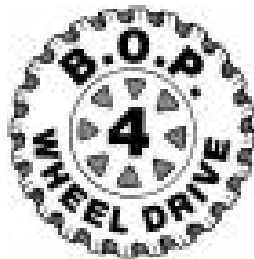
If your Club logo has been updated, can you send a copy of it to editor@nzfwda.org.nz please.

As Clubs have AGMs please send the NZFWDA National Treasurer (treasurer@nzfwda.org.nz) an updated list of your President, Secretary, Treasurer and NZFWDA delegates details as these are vital in communicating with your club.



auckland4wd.org.nz

Bay of Islands 4x4 Club



bop4x4club@gmail.com



cozzie4x4@gmail.com



hunt2@windowslive.com



www.geyserland4wd.co.nz



justjeepinaklnz@gmail.com

Kaitaia 4WD Club Inc.
Kaitaia4x4club@hotmail.com



Kaimai 4x4 Club



www.kc4wd.co.nz



www.lroca.org.nz



manukau4wd.org.nz



norwestohv.org
secretary@norwestohv.org



admin@nzjeepclub.co.nz



rodneyoffroadclub@gmail.com



Sulphurcity4wheelers@outlook.com



United 4WD supporters
u4wd@nzfwda.org.nz



secretary.waik4wdclub@gmail.com



Whangamata4x4@gmail.com



whangarei4x4club@gmail.com

Wilderness Ridge Riders 4WD Club

Central Zone Clubs

Anything underlined will either open up in your internet browser or open your email to send the person a query.

If your Club logo has been updated, can you send a copy of it to editor@nzfwda.org.nz please.

As Clubs have AGMs please send the NZFWDA National Treasurer (treasurer@nzfwda.org.nz) an updated list of your President, Secretary, Treasurer and NZFWDA delegates details as these are vital in communicating with your club.



cruiser4wdclub@gmail.com



VEHICLE CLUB
Wellington
www.cvc.org.nz



<https://www.facebook.com/DesertDefenders4wd>

Featherston Family
4x4 Club



www.hb4wd.co.nz



www.kiwi4x4.org.nz

Levin 4WD Club



www.m4wdc.org.nz



www.naki4wd.org



www.twincity4x4.co.nz



<http://wf4x4c.org.nz>



wellingtonjeepclub.co.nz
wjeepc@gmail.com



Southern Zone Clubs



www.4x4events.co.nz

Central Otago 4WD
Club
co4wdc@gmail.com

Clutha 4WD Club



www.lrec.co.nz



www.lroco.com



marlborough4x4club.weebly.com



nel4x4@gmail.com



www.or4g.org.nz



shotover4wdclub.co.nz

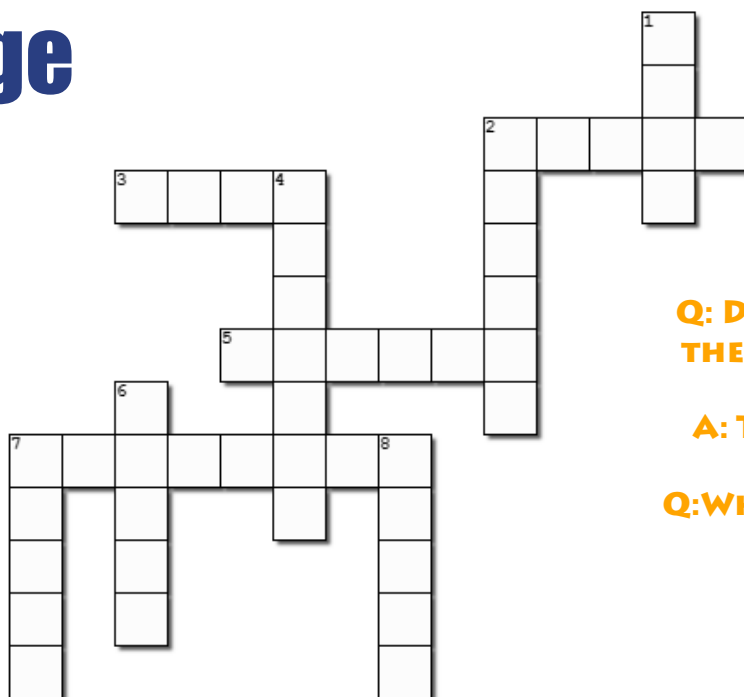
South Island Deaf
4x4 Club
s.i.deaf4x4club@hotmail.com



southlandlandroverclub.co.nz



Kids Page



Using the clues below fill in the cross word squares

Across

2. Has a cable and hook and will help get you unstuck.
3. Holds the wheel on
5. Person who steers the 4x4
7. Every one in the 4x4 should wear one

Down

1. You will need one to change a tyre
2. You'll need these if it rains
4. Helps the motor breathe under water
6. How you talk to the other 4x4ers
7. You use this to dig
8. A four wheel drive has five

Can you find the 12 hidden 4x4's in this picture?



RIDDLE..... I HAVE A MANE BUT I'M NOT A LION
AND I WEAR MY SHOES TO BED. WHAT AM I?

NZFWDA YOUNG DRIVER OF THE YEAR CUP

2008-09	Mitch Seymour
2009-10	Martin Rivers
2010-11	Ash Senior
2011-12	Shaun Robertson
2012-13	William Sturme
2013-14	Renee Harrison
2014-15	Rachel Buckthought
2015-16	Daniel Howat
2017-18	Aaron Tosland
2018-19	Caitlyn Thomsen

To nominate a Young Driver in your Club, contact the NZFWDA National Secretary secretary@nzfwda.org.nz Entries must be received by 31st January.

Riddle Answer: Horse
CROSSWORD: ACROSS 2. Winch. 3. Nuts. 5. Driver. 7. Seatbelt.
DOWN: 1. Jack. 2. Wipers. 4. Snorkel. 6. Radio. 7. Spade. 8. Tyres