



September/October/November 2020

# Trail Torque

The official Newsletter of the New Zealand Four Wheel Drive Association

Established in 1974, the objective of the Association is to further and improve Four Wheel Drive activities in NZ. As a member of the NZFWDA, you become an integral part of this effort to ensure that present and future generations can continue to enjoy our country in four wheel drive vehicles.



24 hour Teams Challenge Southland (2006)

## Inside this Edition

Dear Members .....	2	Upcoming 4x4 Events/Trips/Runs/		Southern Zone Clubs.....	17
2020 AGM.....	2	Important Dates .....	8	Benefits of your NZFWDA	
NZFWDA 50th Anniversary.....	2	Mt Egmont 4WD Club Pairs Event		Membership.....	18
Members Only Database & Portal .....	3	2020.....	9	Threats to our Land Access.....	18
NZFWDA Press Release		The NZFWDA AGM .....	10	CCVC 50th Anniversary.....	19
NZFWDA Remits & Regulations.....	4	Executive Reports .....	11 - 13	Consultation for Territory Authorities..	
42 Traverse Working Bee .....	5	Letters to the Editor .....	14	.....	19
Road Status.....	5	LVVTA.....	15	Advertising in Trail Torque .....	19
Locked in the Garage .....	6-7	Northern Zone Clubs .....	16	Kids Page .....	20
Looking Back at our Clubs.....	7	Central Zone Clubs .....	17		

NZFWDA Postal Address: New Zealand Four Wheel Drive Association Inc. PO Box 90960, Victoria Street West, Auckland 1142

NZFWDA ONLINE: [www.nzfwda.org.nz](http://www.nzfwda.org.nz)

Facebook: <https://www.facebook.com/NewZealandFourWheelDriveAssociationInc>

**Articles and Letters NZFWDA Disclaimer.** The views and opinions of contributors to this publication are those of the author(s) and unless stated otherwise do not necessarily reflect the opinions or views of NZFWDA. Responsibility for the views and information in articles lies with the author(s) concerned. The NZFWDA and its editor reserve the right to edit abridge or discard any or all material submitted for publication. **Copyright.** The New Zealand Four Wheel Drive Association claims copyright and the right to be acknowledged as the publisher of Trail Torque and its contents.

Trail Torque is produced four times a year and delivered via the NZFWDA Membership email database.

# Dear Members....

## Haven't been getting Trail Torque in your email?

We need your up-to-date email address!

Without it, you won't get our email notices or Trail Torque. Please pass this message on to other members and your club officers.

Members: Clubs supply your email addresses and other contact details to us along with your affiliation fees.

This year our new Membership Officer has spent a huge amount of time contacting clubs and individuals to achieve a big update.



From now on, members can update their own details in the new members portal, once they are affiliated and have received their welcome email.

Clubs: When your club officers

change, or any contact details change, please advise [membership@nzfwda.org.nz](mailto:membership@nzfwda.org.nz) so we can update the database and make sure you receive our communications.

## 2020 NZFWDA AGM

In the last Trail Torque we asked clubs to let us know what their preferences were for the AGM this year. The consensus was for a face to face meeting. However, with Covid-19, most hotels in Auckland are committed as isolation facilities until at least December this year.

The Executive have taken this in to consideration and decided that we will have an Electronic AGM on 7th November. This will be a shortened format to take care of the matters that need annual input from our members.

The Notice of AGM will be sent out by October 10th to give members the 28 days notice of AGM required in the Constitution. This will include the Agenda detailing the matters to be discussed. The remits sent to clubs in July will be deferred to the 2021 AGM being held in Wellington.

A copy of the Final Annual Accounts for the 2018/2019 financial year with the corrections requested at the last AGM, and the Annual Accounts for the 9 months, April 2019 to December 2019 for approval at the coming AGM

were sent out to your clubs Secretary in August.

A reminder that, as agreed in the Remits for last year, the Association's Financial Year is now January to December each year, while the membership year remains at June to May each year.

Stay safe and be kind  
Kath Jaggard  
National Secretary

## In 4 years time the NZFWDA will turn 50.



We are looking for information on the founding meeting of NZFWDA including exact Taupo location, photos, attendees names, documents, stories etc.

- Should there be a separate weekend celebration at Taupo where it all started?
- Are you interested in attending a weekend event in Taupo?
- Would you like to be a part of an AGM Conference?

Discuss at your club meetings and give feedback to your zone delegates to pass on at zone level or email your thoughts or ideas to Kath [secretary@nzfwda.org.nz](mailto:secretary@nzfwda.org.nz)



# Our new members-only Database and Portal

<http://nzfwda.tidyhq.com> is the address of the new database & members portal for the NZFWDA. There's also a link to it from our website [www.nzfwda.org.nz](http://www.nzfwda.org.nz) as shown below.



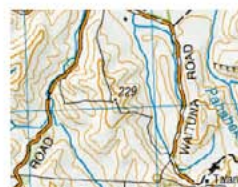
## Getting away with the NZFWDA

Nature beckons and your 4x4 can provide the means of allowing you and your family to enjoy the adventure and scenery that exists beyond the main highways of New Zealand.

## THE NEW ZEALAND FOUR WHEEL DRIVE ASSOCIATION

Values the highest safety standards before, during and after all 4WD activities.

Endorses respect and care while participating in 4WD activities in the Environment.



It consists of two parts:

1. A secure online database of all NZFWDA financial members' email addresses and contact numbers.

This is exclusively used by only the NZFWDA and your details will not be shared outside of the organisation.

2. A membership information portal, exclusive to NZFWDA financial members. In this secure area you can update your own information, use like a website, find out who and where at National, Zone & Club level to contact, download documents, get the latest news, upcoming events, LVTVA info, training, links to CZCTC & NZ 4x4 Trials and more. It does have a small public component too.

The NZFWDA Exec has been listening, we heard your issues with the old database, the lack of Trail Torque delivery and communication in general. Over the past twelve months we have been looking at other options.

In the last three months the portal has been developed and expanded. Many of you have been contacted for your details as we have endeavoured to make our database of members as accurate as possible. We can now communicate with you over multiple platforms.

Our social media has been expanded to cover Email, NZFWDA Member Portal, Facebook & Twitter (@nzfwda).

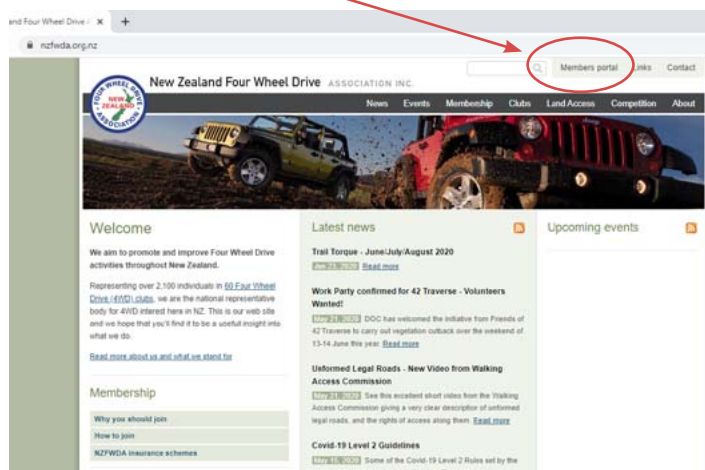
We have processed over thirty Clubs and checked more than one thousand 2020 financial members email addresses, of which all members who have had incorrect email addresses have been contacted and updated.

Your email address is important as it is your login for the membership information portal, how the NZFWDA can communicate directly to you and where your Trail Torque will be sent.

The NZFWDA membership information portal is for all members to use, we will keep it up to date with events, so remind your club secretaries to send in your club events/fundraisers/clean ups so we can put them up on the calendar.

When you receive your instructions to login, please do, take a look around, and give us feedback.

Craig Lilford  
[membership@nzfwda.org.nz](mailto:membership@nzfwda.org.nz)





New Zealand Four Wheel Drive Association  
<https://nzfwda.tidyhq.com/>

## NZFWDA Remits and Regulations - Invitation for Club Feedback by 19 September

The National Executive has confirmed the Remits that propose a number of amendments to the Constitution, which were to be voted on at the 2020 AGM, now postponed to the 2021 AGM, and has approved the new Regulations document.

The Remits and Regulations have been provided to affiliated clubs well in advance of the normal notice period, to allow clubs plenty of time to have a look at them and to advise the National Exec of any concerns or questions. This will allow the National Exec to tidy up any anomalies before formally submitting the remits.

The Remits cover these areas:

- Members to have obligations.
- Club responsibilities.
- Consequences of not complying.
- Clarify and strengthen the relationship between sub-committees and the National Exec, and their relative powers and responsibilities.
- Responsibilities for arranging, controlling and managing events.
- Recommending that

every affiliated club becomes an Incorporated Society.

- Tidying up several minor gaps and modernisations, such as allowing for online banking.
- Correcting some terminology inconsistencies throughout.

Rather than including lots of details about events in the Constitution and then have future problems or delays when they need updating, these have been put into the separate new Regulations document. Although this document won't require AGM approval, the National Exec is keen to get feedback from clubs to help ensure that it is fit for purpose.

Corresponding amendments to National Competitions Rules are also being considered by the Comps Committee as Comps remits.

Documents were sent on the 26th July for your club's consideration, they were:

- Remits.
- Constitution, amended in draft to show the effect of all the remits. This was in 3

formats for convenience:

- all changes tracked, excluding most formatting, pagination, table of contents;
  - simple tracking, showing only new or amended text, all deletions are hidden;
  - totally clean, with amendments not highlighted in any way.
- Regulations.

Clubs are invited to email any feedback, questions or issues to [secretary@nzfwda.org.nz](mailto:secretary@nzfwda.org.nz) by Saturday 19 September 2020 which will then give the National Exec time to look at any corrections required before sending out the formal Remits.

Or feel free to telephone the National President on 027 446 5634 or the National PRO on 021 612 216 to discuss these if you prefer.

Grant Purdie, National PRO  
On behalf of the National Executive.

## Club H&S Responsibilities

Trip Leaders and all other Club officials have H&S responsibilities. The NZFWDA recommends that every affiliated 4wd Club:

- Adopts its own Health and Safety Policy.
- Adopts its own health and safety processes, documents and forms.



## Team trims Traverse



David Sole (foreground) and Darren Young, Traverse volunteers from Wellington, work on cutting back vegetation on the 42 Traverse.

A group of 32 four-wheel drive enthusiasts contributed over 200 man-hours in mid-June to cut back encroaching vegetation along the 42 Traverse route through the Tongariro Forest.

Although 4WD's are normally banned during the winter months, the Department of Conservation gave permission for access and for the cut back project.

The exact distance trimmed was hard to define, but GPS data suggests that around 12 kilometres was cleared over the weekend.

For health and safety reasons the Department does not allow volunteers to use chainsaws to clear branches. Trimming was with brush cutters, pole saws and hand tools, with support crews following

to clear the cut material off the track.

The cutting back of overgrowth and some strategic spraying by DOC of the often rampant blackberry, means that the popular recreation route is easier for passing people and vehicles, while also allowing better drying of the track to reduce damage to the surface.

There are still around 10 kilometres to address across the centre of the 42 Traverse and planning is underway by Friends of 42 Traverse Inc for another effort in November this year. [www.friendsof42traverse.nz](http://www.friendsof42traverse.nz)

"A clearance right through would be a first in over 20 years for the route," said Peter Vahry, chair of Friends of 42 Traverse.

## 42 Traverse cut back on 21/22 November

The Department of Conservation have confirmed that another cut back of the 42 Traverse can be held on 21/22 November 2020. Put the date in your calendars and encourage others to join the effort to complete this effort to improve the accessibility of this great off-road route.

Watch for more details over the next few months at <http://friendsof42traverse.nz/news.html>

IMAGE: Ruapehu Bulletin article on 1 July 2020 about the cut back of the 42 Traverse in June.

## Road Updates

42 Traverse is **CLOSED**

Acheron Road is **CLOSED**

Maratoto is **CLOSED**

Rainbow Station Road is **CLOSED**

Waitawheta 4WD track is **CLOSED**

**MASTERCRAFT KITCHENS**  
Pukekohe/New Lynn

# Manukau Winch Challenge

27<sup>th</sup>-28<sup>th</sup> November 2020

[events@manukau4wd.org.nz](mailto:events@manukau4wd.org.nz)



# Locked In The Garage

Story by Shaun Robertson

PRINTED WITH PERMISSION  
FROM THE NEWSLETTER OF THE



Time... Something none of us have enough of... That was until Covid 19 took over our normal work lives and meant we had to stay home and avoid going out at all costs, then suddenly there was a lot more spare time to spend doing many different things to keep yourself busy at home, even things like writing about what you are doing!

At the beginning of lockdown I planned that I wanted to achieve some things on my to do list, one of which were getting lots done on the Nissan and tidy up around the house.

One of the first things to do was to give the truck a good clean mostly underneath from the recent winch challenge event so I could work on it and pull the rear diff out to see what the noise was coming from there.

After pulling the rear diff bung out the first thing I heard was metal bits falling out, a very sad moment after just building the high pinion rear setup too.

Not to mention I also found both rear axles were twisted at the splines and when the diff finally came out there were missing teeth and the crownwheel was cracked almost all the way around... Ouch!!

Well at least I wasn't the only one that suffered driveline damage at the winch challenge there were a number of trucks breaking diffs, cvs, winch pto's, ground anchors, all the goodies but it was still lots of fun haha.

With the truck nice and high on axle stands, I decided to have a go at trying to straighten the body out as it has had a fair knocking around from all the tracks it has battled in its time. Something I have been wanting to do for a long time.



I am no panel beater and I don't have any panel tools or skills, I just used bits of 4x2 timber offcuts, a bottle jack and scissor jack, and lots of patience, self teaching, and some care as well lol.

Basically I worked on each dent and panel one at a time starting at pressing the outside edge of the dent back out working my way to the center of it with the scissor jack wedged between the inner and outer skins of the body with the bits of 4x2 timber between them and the bottle jack supporting the inner body panel so it wouldn't press it out. I also had a heater keeping the area I was working on warm so the paint would be less

likely to crack, (Caitlyn's suggestion and it worked ;-).

I was really happy with how easy it was to do and I managed to get pretty much every panel as straight as I could with what I had and the body looks a lot better now.

Next step when I can get around to it will be getting some panel beating tools so I can get the rest of the panels nice and straight. And one day a new paint job.

There is still plenty to do on it. I will be just chipping away at it when I do and also I am tackling doing lots of other things to do around the house every



Continues...

day, painting parts of the shed exterior, house wiring, fence staining, waterblasting the deck to be painted, surely got a lot of stuff to do over this period of time!

So that's a bit of what's been happening in my neck of the woods, will be interesting to see what else you guys are up to over this time.



Send your best story from the Club Newsletter to [editor@nzfwda.org.nz](mailto:editor@nzfwda.org.nz) with any permissions from the author and we will republish it here in Trail Torque.



## KEEP SECURE ON AND OFF THE ROAD

When it comes to insurance you often only find out you're not covered for what you think you are when it's too late.

**Off-Road 4WD Insurance** is designed for 4WD enthusiasts in collaboration with the **New Zealand Four Wheel Drive Association**.

**COVER EXTENDS ACROSS**

- ✓ Accessories & modifications
- ✓ Agreed Value option
- ✓ Third Party Liability

✓ Automatic Loss of Use extension incorporated into the Premium for Private and Commercial use

It's an insurance option you can trust! Get in touch, we'll keep you covered on, and off, the road.



**Phil Thompson**  
Branch Manager/  
Commercial Broker  
021 277 0880  
[phil.thompson@rothbury.co.nz](mailto:phil.thompson@rothbury.co.nz)

**rothbury.co.nz**

## Looking Back

Tim Warburton sent in some pages from an Old Twin Diff Club Newsletter. Here is a plucked out point from the Club Rules.

### 8, TYRES:

THESE ARE THE MINIMUM AND RECOMENDED OFF ROAD TYRE SIZES FOR VEHICLES PARTAKING IN CLUB TRIPS OR RUNS.

#### 1. MILITARY JEEP (M.B. TYPE)

600x16" MIN.

650x16" RECOMENDED.

#### 2. 88" LANDROVER. AND AUSTIN GYPSY.

650x16" MIN.

700x16" RECOMENDED.

#### 3. 109" LANDROVER.

750x16" MIN.

#### 4. C.J.5 JEEP AND BRONCO.

700x16" or 15" MIN.

#### 5. RANGE ROVER.

700x16" MIN. (WET).

STANDARD 205 RADIAL MIN. (DRY OR SAND).

#### 6. TOYOTA, NISSAN AND CHAMP.

700x16" MIN.

750x16" RECOMENDED.

EXCEPTIONS TO THE ABOVE DUE TO GROUND CONDITIONS AND COMMITTEE'S DISCRETION.



# 4x4 Events/Trips/Runs/Important Dates

**Events and Trips Disclaimer.** Care has been taken in entering details of these events. However NZFWDA does not take responsibility for any inadvertent inaccuracies or subsequent changes made by the event organisers. Trips and events will normally be hosted and organised by a Club or Clubs and not the Association itself. All events, trips and runs are the responsibility of the hosting Club. Potential participants should contact the relevant event organiser or Club.  
Email events to [editor@nzfwda.org.nz](mailto:editor@nzfwda.org.nz)

Anything underlined will either open up in your internet browser or open your email to send the person a query.

## 5 SEPTEMBER 2020

### MAKAIRO TRACK WORKING BEE

This track is in the northern Wairarapa and is about 9ks long, it has not been used for a long time. A great chance to open up a new 4X4 track. What to bring - track clearing gear, chainsaws (must have safety gear), Scrub bars, spades and man power! Meeting Time is 9:00am, at SH2 Mangatainoka by Tui Brewery. This is a combined event with Central Zone Clubs & CCVC. Contact John Vruink Ph 027 443 9981 [john.vruink@gmail.com](mailto:john.vruink@gmail.com)

## 3 OCTOBER 2020

MT EGMONT 4WD CLUB PAIRS EVENT. 300 Durham Road Lower, Norfolk, Inglewood 4388. See next page.

## 11-13 OCTOBER 2020

HARMER EARTH MOVING NZ1 WINCH CHALLENGE. Located 20 min south west of Methven. There are 3 night stages on Friday followed by 8 day stages on Saturday and the other 8 on Sunday. Classes: Outlaw; Open; Clubman (as per Mainland Winch Challenge rule book). Challenge (Clubman rules but no WOF required and tyre size up to 930mm). More info here: <http://4x4events.co.nz/index.php/nz1-winch-challenge/>

## 17-18 OCTOBER 2020

2020 MATARIKI FORESTRY CHARITY 4X4 RUN, hosted by the Whangamata 4x4 Club Inc. The run will cover 2 days and be for less shiney more club truck and above. All funds raised will be donated to Charity. Come along for a great weekend. We are limited to 60 trucks in total, so get in quick. Price is \$180 per vehicle for both days. Health and Safety advice will be provided after registration. Minimum equipment required for run as follows: First Aid Kit, Fire Extinguisher, Spare Tyre, Recovery Strap, Rated recovery hook front and rear, 2 way Radio, Spark Arrester on Diesels. Apply here : <https://form.jotform.com/202151640173847>

## 7 NOVEMBER 2020

NZFWDA AGM. See page 2 for details.

## 8 NOVEMBER 2020

### NOVAWINCH KING OF CANTERBURY 2020

Event is to be held 20kms west of Methven. Stated as New Zealand's first Xtreme 4WD endurance race limited to 20 vehicles. 2 x 2 hour enduros with service break between. 7.5km course over fast flowing areas, rough terrain, valleys, rocks, mud and possible winch wall. Entry \$50 spectators free. Further details at <http://4x4events.co.nz/index.php/novawinch-king-of-canterbury/> or email [info@4x4events.co.nz](mailto:info@4x4events.co.nz)

## 14 - 15 NOVEMBER 2020

ANNUAL AHUROA VOLUNTEER FIRE BRIGADE FUNDRAISER. By Rodney Offroad Club. Postponed from March due to fire risk. Annual event held at Ahuroa. Suitable for all vehicles. Camping available from Friday. Registration is online prior to event. No on day registrations and numbers limited. Included in your entry fee is you and your passengers dinners on Saturday night and breakfast Sunday morning. Lunches for Saturday must be pre ordered with your entry. Participants need to be members of NZFWDA and vehicles require recovery points and usual safety and recovery equipment. Vehicles must have Minimum good All Terrain Tyres, First Aid Kit, 2Kg Fire Extinguisher, Spade, recovery straps. Registration will be all online <https://form.jotform.com/193551709659875> Contact Stephanie on 0274795155. Email [rodneyoffroadclub@gmail.com](mailto:rodneyoffroadclub@gmail.com) for further details.

## 27-29 NOVEMBER 2020

(Provisional Date listed in the August 2020 Newsletter)  
MANUKAU WINCH CHALLENGE – Contact Manukau 4WD Club for any information. Dean Currie (027) 585 8947 [events@manukau4wd.org.nz](mailto:events@manukau4wd.org.nz)

## 24 - 25 APRIL 2021

NOVAWINCH TEAMS EVENT REEFTON 2021. Orienteering type event in teams 3 vehicles and 6 people. Points awarded for reaching location with photo to prove it. Think Camel Trophy or Malaysian RFC as a team's event with challenges to test team work and ability to get through challenges along the way. Based in Reefton each day. Limited to 16 teams. Cost \$360.00 per team which includes meals. Additional information available at <http://4x4events.co.nz/index.php/westport-challenge-2018/> or email [info@4x4events.co.nz](mailto:info@4x4events.co.nz)



The calendar will be updated with final dates & locations following the AGM (October 2020)  
Round One: 6th December 2020, South Waikato.  
Round Two: 23/24th January 2021, Thames Valley.  
Round Three: 27/28th February 2021, Taranaki.  
Round Four: 14th March 2021, Manawatu.  
Round Five: Early April, Te Puke.  
Round Six: Late April, Hawkes Bay.

Check [www.nz4x4trials.co.nz](http://www.nz4x4trials.co.nz) for up to date information about the 2020/2021 National 4x4 Trials Series calendar.



# MT EGMONT 4WD CLUB PAIRS EVENT 2020



**SATURDAY 03 OCTOBER 2020**

300 Lower Durham Road, Inglewood

9am Start



FAMILY (2 ADULTS AND 3 CHILDREN) \$20

ADULTS \$10

CHILDREN \$5

CASH ONLY! NO EFTPOS

NO DOGS PLEASE!

**FIND US AND OUR  
EVENT ON FACEBOOK!  
MT EGMONT 4WD  
CLUB, TARANAKI**



# The Annual General Meeting

An Electronic AGM will be held on 7th November 2020. This will be a shortened format to take care of the matters that need annual input from our members. The Notice of AGM will be sent out by October 10th to give members the 28 days notice of AGM required in the Constitution. This will include the Agenda detailing the matters to be discussed.

## Inside the NZFWDA Constitution

### ARTICLE 19

#### POWERS RESTRICTED TO THE ASSOCIATION IN GENERAL MEETING

The following powers shall be restricted to the Association in general meeting.

All voting on the matter is to be by the delegate method, in accordance with Article 22.

- a) The alteration of these rules.
- b) The expulsion of any officer, member, affiliated club or delegate subject however as hereinbefore and hereinafter provided by these rules.
- c) The Election of officers and honorary life members of the Association.
- d) To determine the amount of annual affiliation fees payable by members of the Association to the New Zealand Four Wheel Drive Association Inc.
- e) To determine the percentage of the annual affiliation fee defined in 19 (d), that is payable by the Treasurer of the Association to the Zone Committees.
- f) Such other powers as may be expressly reserved by these rules or by the Annual General Meeting of the Association from time to time.

### ARTICLE 22

#### VOTING AT GENERAL MEETING

- a) All voting on matters at General meetings shall be by Delegate Voting Method as described below.
- b) Each affiliated club may be represented at all general meetings of the Association by one or more delegates.
- c) The number of votes which an affiliated club may exercise shall be determined on the basis of one vote per twenty or part thereof financial members of the Association in that club. No delegate shall be permitted to exercise more than three (3) votes.
- d) Affiliated clubs shall be given notice in writing of the number of votes available to them prior to the meeting. Clubs must inform the Secretary of the name(s) of the delegate or delegates appointed to represent that club and the number of votes will exercise prior to the start of any general meeting of the Association. Delegates need not be a member of the club, which they represent but they must be financial members of the Association.
- e) The Chairman shall have a casting vote.
- f) To facilitate meetings, the Chairman may call for a vote by a show of hands or voice. However, any delegate may call for and shall be granted a count of the delegate votes. The Delegate votes so counted shall decide the matter.
- g) Failure by any Delegate to call for such a Delegate vote (or the absence of any Delegate) shall not be grounds for subsequent objections and/or appeals regarding the voting method employed.
- h) Proxy votes are not accepted at General Meetings however delegates may be appointed as set out in this Constitution.

### Who are the Officers?

#### ARTICLE 7 OFFICERS

- a) The Officers of the Association shall be a Patron, a President, and the President of each zone who will become the Vice-presidents of the Association, a Secretary, a Treasurer, a National Public Relations Officer, a National Competitions Officer, and a Public Relations Officer from each Zone.

## NOMINATIONS ARE OPEN

Nominations for the 4 National Officer positions can be sent to [Secretary@nzfwda.org.nz](mailto:Secretary@nzfwda.org.nz)

### LIFE MEMBERS OF THE NEW ZEALAND FOUR WHEEL DRIVE ASSOCIATION.

**Awarded 2018 - Russell Quin**

**Awarded 2017 - Bob Holmes**

**Awarded 2017 - Eileen Revell (nee Austin)**

**Awarded 2017 - Steve McMinn**

**Awarded 2016 - John & Nonnie Cowper**

**Awarded 2015 - Ces Horan**

**Awarded 2015 - Kath Jaggard**

**Awarded 2011 - Peter Vahry**





# President Report

Neville Dunton

P: 07 578 2689 - M: 027 446 5634 - E: [president@nzfwda.org.nz](mailto:president@nzfwda.org.nz)



My recent President's Piece contributions to TT have, necessarily, laboured the need for stronger oversight and management of our 4WD recreation and sporting activities at all levels of the NZFWDA; individual members, Clubs, Zones, Comps, and National Executive. All brought about by the successful Deadwood prosecutions.

We must now be aware that our sport and recreational 4WD activities will position us in situations where our actions might be perceived as doing harm. We need to think and do differently but there is no reason why we cannot continue to enjoy getting out there in the wild, 4 wheeling.

I've been a member of NZFWDA for over 35 years; my first 4WD was (truthfully) a Lada Niva and, in the mid 1980's I gained some notoriety (of the humorous kind) for some rather silly actions on the old Neavesville (originally Nevesville) Track in the Coromandel Ranges.

It was a wet, heavy rain day; I still remember clawing my way up the then very muddy and slippery track and eventually dropping down into the valley of the old town site, visiting a remaining fence- enclosed grave site with headstone, studying the stone door step of the pub; the door step being the only remaining relic of this small former gold exploration town. The return trip was mostly a slippery slide until, in a dramatically uncontrolled manner, the Niva went over the edge. It was a long way down but, fortuitously a single staunch punga arrested the slide. The subsequent recovery was made all the more difficult because the Niva had no recovery points, (I did have a spade, a stop, and a fire extinguisher,

though). It took some time after to not be greeted with "Neville's Niva of Neavesville" but, with good guidance from "old timers" of BOP 4WD Club, I learned about reducing tire pressures for traction, the need for recovery points and, also, the errors of my 4WD vehicle choice; I subsequently bought.....a (Mahindra) Jeep! During our recent National Covid lockdowns I saw a facebook post about the model and makes of vehicles we might have owned over the years. I surprised myself by locating a long dated list of vehicles I have owned, updated it with some of my recent years' acquisitions, and discovered I have actually owned 67 vehicles to date, 44 of them being 4WDs.

I've driven most of the tracks and trails of the North Island, done a fair number of trips to the South Island (but still have a hankering for more), have traipsed extensively in Australia, and, in more recent times, also managed to get into the great American outdoors including a 5 day excursion (in a Jeep Rubicon) across the Rubicon Trail. I have also competed in our National Trials series for longer than I can now remember.

I figure that, mostly in ignorance, I've probably contributed to a fair amount of adverse impact on our environment during my 4WD recreational and sporting activities. Following the Deadwood prosecutions I am now fully aware, and accepting, of the possible harm that 4 wheeling can cause. None of us can now act in ignorance of our obligations to protect and preserve the environment. I believe it has been the attractions of the outdoors and our love of the natural environment that has stimulated our individual and collective love of 4

wheeling; there's just no comparison between wheeling thru a multi-level carpark building and the open vista of some South Island mountain terrain. Right?

All 4WD trips will need planning, advice, assessment, and maybe formal consent(s) but mostly we all just need to play with respect for each other, the environment, and the law. We can still enjoy most of the challenges we might have faced in the past and, I have a sense we might find ways to (legally) extend some of the extreme obstacles presented in competition events. But, we may need to just slow down before "we're off" and apply a bit of thinking of consequences.....most 4 wheelers have "tread lightly" principles in the back of our minds; now we just need to remember to bring these to the front....

So, after spending what seems to have been years with other Executive members writing Constitutional remits and new Regulations to cover off most of the liability risks and obligations brought to the fore by the Deadwood prosecutions I am (almost) ready to declare myself done with all the paperwork and get out recreating more.

Has all this governance stuff killed my enthusiasm and love of 4 wheeling? Hell no!! I have started on a new truck build (yes, another Nissan Patrol), which I hope to get out and about in by early October.

Take care out there but most importantly, stay safe and have fun!

Neville Dunton  
President, NZFWDA Inc

## THE NEW ZEALAND FOUR WHEEL DRIVE ASSOCIATION

**Values the highest safety standards before, during and after all 4WD activities.**

**Endorses respect and care while participating in 4WD activities in the Environment.**

**Acknowledges the contribution of its members and their values.**

**Values and respects land owners and land users.**

**Encourages non-discrimination of all participants.**



# National PRO Report

Grant Purdie

E: [pro@nzfwda.org.nz](mailto:pro@nzfwda.org.nz)



In 2017, in his speech to the AGM, our National President spoke about the intent to make improvements to the association and the way it operates. Quite a lot of progress has been made with this, although it does seem to take ages to get things done.

Now, some 3 years later, the National Exec has reason to be proud of making progress and especially over the current elongated NZFWDA year, despite the restrictions brought about by Covid-19. Here is a recap and update of the key points.

## GW Court Case

More than enough has been reported to members over the last year, suffice it to say that this consumed an enormous amount of time for some of the Exec.

## Remits

Another large and complex project, also reported at length previously. The court case had brought to light the need for lots of amendments to the constitution, not at all what we had been planning to do over the year, having only completed a large set of remits last year.

The draft remits and our new regulations document were emailed to all club secretaries on 26 July, with an invitation for clubs to provide feedback by Saturday 19 September, giving clubs some 8 weeks.

We are keeping to our timetable to process any adjustments arising from club feedback prior to the 2020 AGM, even though the agenda will not include the remits until the 2021 AGM, so that we can benefit from the expertise of the current Exec members who are familiar with the details, there being no certainty they will remain as officers after the 2020 AGM.

## So please get your questions and other feedback to us by 19 September.

This will help ensure the remits are robust and more likely to be approved at AGM rather than delayed further.

## New Systems and Membership Officer

Our rather slow project to modernise the technology of our systems got a sudden shot in the arm earlier this year, when the current database and website went inexplicably off-line and the service provider was nowhere to be found for a long time.

Thanks to a massive effort by Craig and Jo Lilford, we are now on a new system, TidyHQ, reported previously and also described elsewhere in this edition of Trail Torque.

As the new system includes a members-only website, the Exec has decided that the old website (now back in action at a different hosting provider) will remain for the time being as our public website, with members-only material moved to the members-only area of TidyHQ. There is also a public part of TidyHQ which Craig has been building up. Any thought of upgrading the website has been put off for now.

Meanwhile Craig has found, as part of migrating to the new database, that the contact details for many members and many clubs were significantly not up-to-date and along with Jo our Treasurer has been contacting clubs and members to update these.

No wonder clubs and members had been complaining they'd not been getting NZFWDA notices and Trail Torque!

The Exec has recognised the significance of the job of keeping membership and club details up-to-date and has co-opted Craig into the new position of Membership Officer. This role is not an additional National Exec position, although this may be looked at in the future.

## Website Pages

### Roads of National Importance

**(RONI) page:** This is being developed for the members-only area in TidyHQ, hopefully able to be opened up within the next month or so.

**Online Document Library:** This will

now be members-only, on TidyHQ. Our first few documents are already published there and more will be added over time. Only the current constitution will remain on the public website, also the sample club constitution once it's available.

**Consultations Page:** This will also be members-only, in TidyHQ. The first entry will be the Greater Wellington Regional Council review of its Parks Network Plan.

## Community Contributions Page:

This will be developed in the public area of TidyHQ, with links to it from the public website and, hopefully, from our Facebook page.

## Land Access

Greater Wellington Regional Council released its review of the Parks Network Plan on 20 August for public consultation. Submissions are due by 23 October.

Of most significance to the 4wd community is that the plan includes the Akatarawa Forest, which has over 100 km of 4wd tracks accessible under a managed access regime run by GW and ARAC.

The National Exec will be making a submission and we expect that ARAC will too, as well as one or more of the 4wd clubs in the area.

The National Exec is not aware of any other submission opportunities, and would welcome hearing about these. Just send an email to [access@nzfwda.org.nz](mailto:access@nzfwda.org.nz)

## H&S Guidelines and the first sample forms & documents

In late 2018 we published the NZFWDA Health and Safety Policy and Guidelines, the end result of another large project consuming hundreds of hours of Exec officers' voluntary time.

This year we finally published our first follow-up document, which is a sample Cub Safety Policy which affiliated clubs may utilise.



The next two documents will be a sample Trip SOP (standard operating procedure), which can be thought of as a Trip Leader's Checklist, and a guide for clubs on how to update the samples for their own use.

Our step-by-step guidelines relating to resource consents will also be added

soon, as two documents (high-level and detailed).

All these will appear in the members-only area of TidyHQ.

Grant Purdie  
National PRO



## Northern Zone President Report

John Hickey

M: 0274 531 247 - H: 09-630 4904 - E: [nthzpresident@nzfwda.org.nz](mailto:nthzpresident@nzfwda.org.nz)

The last Trail Torque in June seems a long time ago.

At that stage we were all getting back to work. Auckland Four Wheel Drive Club and Land Rover Owners Club Auckland joined in the annual Tree Planting at Te Tau Piriri Regional Park adding more trees to the trees planted in previous years.

The recent greater Auckland lockdown has of course changed all of that.

My own club had just started to open up for meetings as I assume had all other clubs. (We thought it was safe to go outside ...)

I accept it was always likely that we would have another outbreak. Hopefully, those involved in the current cluster will recover soon and that Covid 19 can be contained.

Not much else has been happening in the north. Maratoto is as far as I am aware, still closed. Tony Burgess has been working on Hull Road with the Auckland Council. The Council has come out with a plan at very short notice for submissions. Eileen Revell, Northern Zone Secretary sent the information out to Zone reps and I understand that Craig Lilford, Central Zone PRO and Membership Officer for the NZFWDA has also sent it out to other Northern Clubs. The unusually

short period of time for submissions seemed unfair. If it was open for a longer period and we were not made aware of it, then they have failed to consult with us. Thanks to all who responded.

You will be aware that the National AGM scheduled for 7 November 2020 will be electronic in a shortened format, to meet statutory requirements because of the problems getting accommodation in Auckland for out-of-towners. It seems that the Northern Zone AGM may have to be postponed to a date before that.

On personal matters, before Lockdown, my wife Penny who works for AUT was in Dunedin helping teach recent immigrant children for 3 weeks so I joined her for a weekend. There were some serious four wheel drives driving around the town ... We came home just before Lockdown...

I am still working under Level 3 protocols and getting to do some of those little jobs that I normally don't get time to do.

Whatever you are managing to do, I hope you are all keeping safe.

Regards  
John Hickey  
Northern Zone President

## 2019/2020 NZFWDA Executive

The NZFWDA Executive are volunteers who administer the Association. Divided into three Regional Zone committees - Northern Zone (North Cape to Taupo), Central Zone (Taupo to Wellington), Southern Zone (the entire South Island) and a Competition Committee.

### President

Neville Dunton

### National PRO

Grant Purdie

### Secretary

Kath Jaggard

### Treasurer

Joanna Lilford

### Northern Zone President

John Hickey

### Northern Zone PRO

Russell De Luca

### Central Zone President

Max Wheatley

### Central Zone PRO

Craig Lilford

### Southern Zone President

Graeme Thompson

### Southern Zone PRO

Brent Wilson

## NZFWDA Competitions Committee

### National Competitions Officer

Brian Howat

### Secretary

Mark Pincock

### Steward

Ernie Powell

### Steward

Warren Jeffery

### Treasurer

Rachel Buckthought

### Northern Zone Scrutineer

Tom Baeriswyl

### Central Zone Scrutineer

Wayne Buckthought

### Scorer

Phil Shailer

Key health and safety messages...

REMEMBER

it is everybody's obligation to act safely.  
Take responsibility for what you can control.

# Letters to the Editor

Letters to the Editor should be sent to [editor@nzfwda.org.nz](mailto:editor@nzfwda.org.nz) Letters should not exceed 200 words and should carry the author's signature, name and residential address and a phone number so as to enable their authenticity to be confirmed. Letters may not be formally acknowledged and may be edited, abridged or discarded at the discretion of the editor.

Where is digital?

One clear result of the COVID-19 pandemic is the ability of the digital world to adapt and connect people remotely in a way that was not really foreseen at the start of 2020.

Certainly, there have been four wheeling YouTube videos for many years and the growth of internet based 4x4 groups has been rampant, but has the New Zealand Four Wheel Drive Association Inc. (NZFWDA) realised the opportunities?

Leading companies around the world and locally are confident enough to hold their annual meetings online, although I can see advantages to an organization like the NZFWDA to have 'face to face' meetings with representatives of its associated clubs, where social interaction can be beneficial. Maybe it would have been better this year to have experimented and simply held an online annual meeting to have sorted the basics of the management of the Association and looked ahead to other matters once it became clear that travel around the country is again practical and importantly, economical.

What is obvious is the fact that online video can reach a lot of people and many overseas four wheeling organisations are finding video a valuable tool, both as instructive You Tube material and in the form of webinar presentations to reach large and dispersed audiences.

I would like to see the NZFWDA become active in the creation of webinars for a whole range of topics. Years ago, it was proposed that potential club secretaries be given some basic training in what to expect and how to minimise the effort needed to do that job. Is that not something that could be conducted as a webinar and then that session archived for future reference?

There is an almost endless array of topics relating to how and where four wheeling is conducted, along with informative things like track maintenance, writing submissions and working with Local Authorities, DoC, etc. How about it?

An idea I floated a couple of years ago was for the NZFWDA to buy a licence to one of the various 'online' meeting/webinar services and then set up an arrangement

where member clubs could log in to that system to hold their own meetings online if that was desired. A cost-effective benefit of membership? I know of one club that has found that its online monthly committee meetings are remarkably efficient and simple.

With the limitations on overseas travel, there is a strong shift towards exploring our own country and already in some regions we are seeing an increase in pressures on rather limited legal four wheeling places and a pattern of unauthorized access to sensitive areas by uninformed vehicle owners. A presence on social media with material promoting 'responsible' four wheeling is now almost imperative by organised four wheeling. We need to be 'seen' to be attempting to influence the way our recreation is undertaken.

Peter Vahry  
NZFWDA life member  
UFWDA ambassador member  
UFWDA international vice-president

I have been asked to provide a response to the above letter from Life Member, Peter Vahry.

Personally I am grateful that Peter shares concerns that I also have regarding the Association's communications with members and from members to National Executive.....

The ongoing Covid-19 pandemic has changed the landscape of how we meet and communicate. I share Peter's opinion that there are many ways in which communications to and from our membership could be improved and, as government responses to this current pandemic continue to promote social distancing with limitations on number of folk who can meet face to face, the need for alternative ways to meet (cyber meetings), conduct meetings, have discussions amongst members, and share via online mechanisms, becomes more and more imperative.

Constitutionally, the NZFWDA Executive Committee is permitted to conduct business by "telephone conference" and our General and Annual General Meetings require members to be present (face to face).

I agree wholeheartedly with Peter's suggestions that we should realise the opportunities the current Covid pandemic offers us to rethink how and when we communicate or share information amongst members and also the entire Association. I welcome this discussion and trust members will see the very real need for modernisation of the rules and guidelines that currently dictate how we can (formally) interact. Whilst there is probably no dispute that we all prefer to meet face to face the current Covid "association rules" do restrict the extent to which we can actually do this (dependent on "Covid level").

National Executive Committee has already determined the deferred May 2020 AGM should be scaled down to include just those matters necessary to confirm things such as Annual Financial Statements, affiliation fees, and Executive Officer appointments. Given the limitations of our current Constitution the Executive have determined that 2020 National Remits should be held over for consideration at May 2021 AGM (hopefully face to face).

The National Executive have been meeting via regular monthly / bi-monthly

Zoom meetings interspersed with a lesser number of face to face meetings and almost all Executive sub-committee meetings have been held, for some time, as online Zoom meetings.

We have, most recently, also set up a new database and an updated website; these changes have improved the quality of information held in our database and have also resulted in lots of new documents and online video productions being loaded onto our database and website; all freely available to members.

We have a long way yet to go but I do want to acknowledge Peter's contribution and opinions around these matters; how we communicate and how we make information available to members are both very important matters and I perceive an urgent need for us to make further changes to our Constitution to enable us to selectively utilise alternates to face to face, present and in-person, meeting formats.

Neville Dunton  
President, NZFWDA



## NEW CHANGES TO IN-SERVICE (WOF & COF) MODIFICATION THRESHOLDS

The NZTA Warrant of Fitness and Certificate of Fitness manual, called the Vehicle Inspection Requirements Manual (VIRM), is being amended, with effect from April 2020.

### Location of changes:

There are two sections of the VIRM that have amendments – the 'Reasons for Rejection' tables and the 'Modification Threshold' tables

### Background:

All modifications to light vehicles must meet WoF/CoF requirements, however not every modification requires low volume vehicle (LVV) certification - there are a number of modifications that are deemed 'under threshold'. These are listed in 'modification threshold' tables, which provide vehicle inspectors a list of modifications which don't require LVV Certification, and the point at which a modified light vehicle must be LVV certified.

The amendments that affect modified vehicles are mainly in the 'modification threshold' tables. There are also some changes to individual Reasons for Rejection sections, which are located throughout the various sections in the VIRM under the 'Reasons for Rejection' tab.

The modification threshold tables are also listed in LVVTA's Modification Threshold document.

[https://www.lvvtan.org.nz/documents/supplementary\\_information/LVVTA\\_LVV\\_Cert\\_Threshold.pdf](https://www.lvvtan.org.nz/documents/supplementary_information/LVVTA_LVV_Cert_Threshold.pdf)

Some of the changes make the intent of a requirement clearer, with the consequence that some vehicles that passed a WoF previously will now be failed. The most important changes are listed below.

There are also many wording improvements in the new threshold which are not covered in this document as they are considered minor, for example the addition of new items to the tables, such as roof mounted solar panels. Changes that are self-explanatory are also not included. Regardless of this, all changes are highlighted within the amended Modification Threshold document.

### MAIN THRESHOLD CHANGES

The main changes to the threshold are related to the following topics:

- >> Tyre and wheel fitment including protrusion of tyres beyond mudguards
- >> Springs and shock absorbers
- >> Items moved from the 'certification never required' to 'certification not required provided that' box
- >> Fuel system threshold more detailed
- >> Future treatment of utes with wide trays
- >> 'Grandfather rights' for vehicles re-entering the fleet
- >> Clarification around modifications to structure, and modifications that present a danger to pedestrians
- >> Steering wheels and attachment

Each change is explained on [https://www.lvvtan.org.nz/may\\_2020\\_lvvtan\\_certification\\_threshold\\_changes.html](https://www.lvvtan.org.nz/may_2020_lvvtan_certification_threshold_changes.html)

If you have any questions relating to these changes, you can contact the Tech Team at LVVTA.

## Forward Vision Requirements

With raised 4WD vehicles becoming increasingly common on our roads, a trend is appearing where the combination of 'lift' and fitted accessories could adversely affect the drivers forward vision. And it is not only bonnet protrusions that need to be considered when certifiers carry out raised vehicle inspections.

The Ranger pictured below has had a light bar more than 400 mm wide fitted on top of the bull-bar, meaning it would need to pass the 8 m sight-line test. In this case, it just passes.



### 15.15 Fixed-roof vehicle forward vision requirements

15.15.1 A low volume vehicle which has a fixed roof must not have any components or fittings forward of the firewall which protrude above a straight line from the centre-point of the windscreen measured both vertically and horizontally to:

- (a) in the case of protrusions 250 mm (10") or less in width, a point at ground level 15 m (49') forward of the front of the vehicle; or
- (b) in the case of protrusions between 250 mm (10") and 400 mm (16") in width, a point at ground level 12 m (39') forward of the front of the vehicle;
- or (c) in the case of protrusions 400 mm (16") or more in width, a point at ground level 8 m (26') forward of the front of the vehicle.

# Northern Zone Clubs

Anything underlined will either open up in your internet browser or open your email to send the person a query.

If your Club logo has been updated, can you send a copy of it to [editor@nzfwda.org.nz](mailto:editor@nzfwda.org.nz) please.

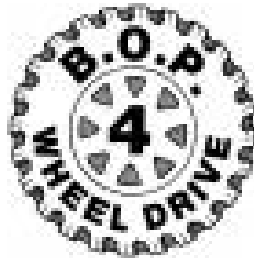
As Clubs have AGMs please send the NZFWDA National Treasurer ([treasurer@nzfwda.org.nz](mailto:treasurer@nzfwda.org.nz)) an updated list of your President, Secretary, Treasurer and NZFWDA delegates details as these are vital in communicating with your club.

**4x4 Challenges NZ Inc.**  
[4x4challenges.org.nz](http://4x4challenges.org.nz)



[auckland4wd.org.nz](http://auckland4wd.org.nz)

Bay of Islands 4x4 Club



[bop4x4club@gmail.com](mailto:bop4x4club@gmail.com)



[cozzie4x4@gmail.com](mailto:cozzie4x4@gmail.com)

East Coast Four Wheel Drive Club



[EBTDCLUB@gmail.com](mailto:EBTDCLUB@gmail.com)



[www.geyserland4wd.co.nz](http://www.geyserland4wd.co.nz)



[Justjeepinaklnz@gmail.com](mailto:Justjeepinaklnz@gmail.com)

Kaitaia 4WD Club Inc.  
[kaitaia4x4club@hotmail.com](mailto:kaitaia4x4club@hotmail.com)



[www.kc4wd.co.nz](http://www.kc4wd.co.nz)



[www.lroca.org.nz](http://www.lroca.org.nz)



[manukau4wd.org.nz](http://manukau4wd.org.nz)



[norwestohv.org](mailto:norwestohv.org)  
[secretary@norwestohv.org](mailto:secretary@norwestohv.org)



[admin@nzjeepclub.co.nz](mailto:admin@nzjeepclub.co.nz)



[rodneymoffroadclub.co.nz](http://rodneymoffroadclub.co.nz)  
[rodneymoffroadclub@gmail.com](mailto:rodneymoffroadclub@gmail.com)



[Sulphurcity4wheelers@outlook.com](mailto:Sulphurcity4wheelers@outlook.com)



United 4WD supporters  
[u4wd@nzfwda.org.nz](mailto:u4wd@nzfwda.org.nz)



[secretary.waik4wdclub@gmail.com](mailto:secretary.waik4wdclub@gmail.com)



[whangamata4x4@gmail.com](mailto:whangamata4x4@gmail.com)



[secretary@whangarei4x4.org](mailto:secretary@whangarei4x4.org)

Wilderness Ridge Riders 4WD Club

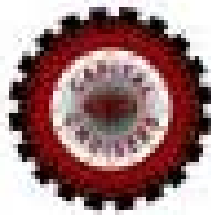


# Central Zone Clubs

Anything underlined will either open up in your internet browser or open your email to send the person a query.

If your Club logo has been updated, can you send a copy of it to [editor@nzfwda.org.nz](mailto:editor@nzfwda.org.nz) please.

As Clubs have AGMs please send the NZFWDA National Treasurer ([treasurer@nzfwda.org.nz](mailto:treasurer@nzfwda.org.nz)) an updated list of your President, Secretary, Treasurer and NZFWDA delegates details as these are vital in communicating with your club.



[cruiser4wdclub@gmail.com](mailto:cruiser4wdclub@gmail.com)



VEHICLE CLUB  
Wellington  
[www.cvc.org.nz](http://www.cvc.org.nz)



<https://www.facebook.com/DesertDefenders4wd>

Featherston Family  
4x4 Club



[www.hb4wd.co.nz](http://www.hb4wd.co.nz)



[www.kiwi4x4.org.nz](http://www.kiwi4x4.org.nz)  
Levin 4WD Club



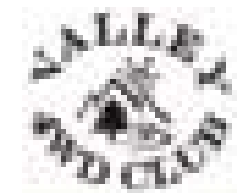
[www.m4wdc.org.nz](http://www.m4wdc.org.nz)



[www.naki4wd.org](http://www.naki4wd.org)



[www.twincity4x4.co.nz](http://www.twincity4x4.co.nz)



<http://wf4x4c.org.nz>

Wellington Jeep Club  
[wgtjeepclub@yahoo.com](mailto:wgtjeepclub@yahoo.com)



# Southern Zone Clubs



[www.4x4events.co.nz](http://www.4x4events.co.nz)

Central Otago 4WD  
Club  
[co4wdc@gmail.com](mailto:co4wdc@gmail.com)

Clutha 4WD Club



[www.lrec.co.nz](http://www.lrec.co.nz)



[www.lroco.com](http://www.lroco.com)



[marlborough4x4club.weebly.com](http://marlborough4x4club.weebly.com)



[nel4x4@gmail.com](mailto:nel4x4@gmail.com)



[www.or4g.org.nz](http://www.or4g.org.nz)



[shotover4wdclub.co.nz](http://shotover4wdclub.co.nz)

South Island Deaf  
4x4 Club  
[s.i.deaf4x4club@hotmail.com](mailto:s.i.deaf4x4club@hotmail.com)



[southlandlandroverclub.co.nz](http://southlandlandroverclub.co.nz)



# Benefits of your NZFWDA Membership



## Unity makes us strong

Numbers are vital in lobbying for recreation opportunities and we need the full support of the four wheeling community. With the support of all clubs we can provide backing of a strong organisation to assist where it may be needed. The more members, the louder voice we have to let our thoughts be known.

## Insurance cover

The comprehensive insurance cover is a unique benefit of the NZFWDA. It provides public liability cover for clubs and members while taking part in or organising 4wd events. There are also policies for legal defence and statutory liability ensuring that NZFWDA members have the necessary cover should anything go wrong.

## Land access

Access to public and private land is vital to four wheeling. The NZFWDA works with land managers, local authorities and government departments in efforts to ensure our needs are recognised. This can extend, as it has in the past, to legal challenges against local authorities over the stopping of legal roads.

There have been many successful programs promoted by the NZFWDA that have allowed 4WD recreational use of public and private land. The

Maratoto trail, the managed use of the Akatarawa's, the reinstatement of bridges on the Whangamomona Rd, 4x4 seasonal use of the 42 Traverse, advocating for 4x4 access to St James Conservation Area etc., are just some of the success stories.

## Competition

Within the NZFWDA there are two major types of competition available - 4x4 Trials and Winch Challenges. Both are high-octane adrenaline filled motorsports which are at the cutting edge of 4wd technology. The products that are now available to be bought off the shelf, and the recognition gained for our sport and recreation because of these motorsports, is invaluable.

For those wishing to get into 4wd competition at the ground level, many NZFWDA clubs run entry level competitions.

## Vehicle regulations

New vehicle rules and regulations are continually being thrust upon us. The NZFWDA is a founding member of the Low Volume Vehicle Technical Association (LVVTA) and has its own Technical Review Panel who work with the LVVTA to ensure that any new regulations relating to 4wd vehicles remain sensible and applicable to our recreation.

## Promotion

Promotion of Four Wheel Driving is at the heart of all these benefits. The NZFWDA works tirelessly to ensure the future of Four Wheel Driving as a safe, friendly and enjoyable recreation.

## Fuel Discount

We have teamed up with Kiwi Fuel Cards to get great discounts on fuel from Mobil, Caltex, Challenge, BP and Z for our members.

Contact Kiwi Fuelcards 0800 43 8383 and tell them you are from the NZFWDA.

## Exclusive NZFWDA Off Road Vehicle Insurance

Rothburys and NZFWDA have continued to develop a full off road insurance cover for members vehicles.

Contact Phil Thompson to find out more. [phil.thompson@rothbury.co.nz](mailto:phil.thompson@rothbury.co.nz)

## Threats to our land access

This is a reminder to everybody who likes to go off-road in their 4wd. As we all know, access to land is vital. Without permission to use properties, we have no recreation.

As we have often highlighted to all our members, it is really important to make sure that every one of us complies with the basics:

- Have a good relationship with the land owner or land manager, understand their requirements

then comply with those. This includes where and when you can go, where and when you cannot go, behaviour expected and any other conditions of access.

- Think safety! Undertake hazard identification and have a safety plan for every trip. See the Health & Safety Policy and Guidelines for Clubs at <https://www.nzfwda.org.nz/healthandsafety>

- Value and safeguard the environment. This includes a "tread lightly" approach and being aware of the requirements of the Resource Management Act.

Failure to mitigate for risks to the environment, such as sedimentation and streambed disturbance, can have dire consequences such as loss of future access, the possibility of a fine or prosecution.

### H&S Risk Management

Risks and hazards are part of the environment our members choose to be in. As such IDENTIFYING AND THEN MINIMISING AND CONTROLLING the hazards will be the most likely route to managing everyone's health and safety.





WELLINGTON

# 50<sup>TH</sup>

ANNIVERSARY

1971 - 2021



VEHICLE CLUB

## 50th ANNIVERSARY PHOTO COMPETITION:

As part of the 50th Anniversary, coming up in 2021, CCVC need some historical photos for things they have planned. They have a few in the archives, but would like to see what everyone has in their own records. To help encourage everyone CCVC have decided to run a photo competition to the end of the year. With winners being presented with prizes at the end of year function. There will be 12 sections to enter.



1970s - Personalities  
1980s - Personalities  
1990s - Personalities  
1970s - Competition  
1980s - Competition  
1990s - Competition  
1970s - Away trip 1970s—Scenic  
1980s - Away trip 1980s—Scenic  
1990s - Away trip 1990s—Scenic  
All photos entered will become property of CCVC and may be used in a 50 Anniversary Book, Calendar or other marketing material or Club publications. Photos to be sent to [50years@ccvc.org.nz](mailto:50years@ccvc.org.nz)  
The prizes will be a \$50 voucher per category.



SOURCE: CCVC Cross Country Chronicle  
July 2020

## Advertising in Trail Torque

Quarter Page	(94mm x 135mm)	\$150
Half Page	(190mm x 136mm)	\$300
Full Page	(190mm x 278mm)	\$600

These prices are per edition of NZFWDA Trail Torque and do not include GST. Invoices are sent yearly and bookings must be made for a minimum of one year. Advertisements must be received copy ready and sent as jpeg or pdf to: Bobbie Kincaid: [editor@nzfwda.org.nz](mailto:editor@nzfwda.org.nz)  
All advertising ("advertising") in Trail Torque is on the basis that

1. The Editor at the Editor's discretion may accept or reject any advertisement without giving any reason.

2. The New Zealand Four Wheel Drive Association ("the Association") does not endorse or recommend or warrant any advertiser or advertising. The Association at its absolute discretion reserves the right to at any time accept or refuse any advertisement or advertising.

3. The Advertiser must ensure and warrants to the Association that all relevant laws and advertising guidelines are observed for the advertising.



## Consultation for Territorial Authorities

We are still keen to receive information from anyone about any consultation opportunities that have come up.

This is mainly so that the NZFWDA can make submissions, which we can only do if we're aware of the opportunity.

And when we finish developing the new page on our website, all our members will be able to see the open consultations that we're aware of and, hopefully, who is working on submissions.

The consultations we're talking about are where a city council, district council, DOC or the Walking Access Commission or anyone else has drafted some document that is open for public consultation. These are usually management plans of some form.

Our interest is mainly anything to do with land access. On the one hand it's important to take every opportunity to suggest amendments or additions to these documents to allow or increase opportunities for access. And on the other hand to object to anything that threatens our existing access.

Please send any information about consultation opportunities to [access@nzfwda.org.nz](mailto:access@nzfwda.org.nz)

## Rescue Chopper Tip

One of our members has suggested that you carry a lighter in your vehicle. It doesn't have to go, as long as the flint flashes. The helicopter pilots night vision goggles can pick up the flash of the flint from a long way off to help guide them.



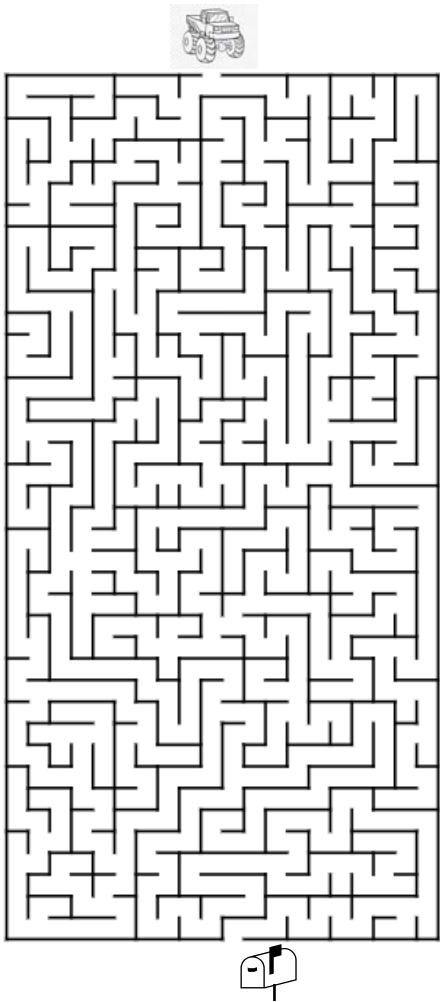
# Games for in the 4x4

**Story Time**  
Ages 8 and up: Inventing a fairy tale. The first person starts with "Once upon a time..." and offers a complete sentence, then the second person adds to the story with their own sentence. This continues with each person until the story reaches a conclusion. You can either set a time limit (15 minutes) or make the goal to wrap it up after each person has a chance to say 3 sentences. Record story time on your phone and have someone transcribe it afterward to have a record of the story you wrote as a family.

**The Alphabet Game**  
Ages 5 and up: One person chooses the right-hand side of the road, and someone else the left. Each player looks for letters of the alphabet that appear on signs or license plates on their side. The object of the game is to point out all the letters of the alphabet in order, from A to Z. The first person to spot the entire alphabet wins.

**The Animal Name Game**  
Ages 6 and up: One person names an animal. Then each person in order has to name another animal (no repeating!) that starts with the last letter of the previous animal named.

## Make your way through the Maze



### NZFWDA YOUNG DRIVER OF THE YEAR CUP

2008-09	Mitch Seymour	2013-14	Renee Harrison
2009-10	Martin Rivers	2014-15	Rachel Buckthought
2010-11	Ash Senior	2015-16	Daniel Howat
2011-12	Shaun Robertson	2017-18	Aaron Tosland
2012-13	William Sturme	2018-19	Caitlyn Thomsen

To nominate a Young Driver in your Club, contact the NZFWDA National Secretary [secretary@nzfwda.org.nz](mailto:secretary@nzfwda.org.nz)  
Entries must be received by 31st January.