



Established in 1974, the objective of the Association is to further and improve Four Wheel Drive activities in New Zealand.

As a member of the NZFWDA, you become an integral part of this effort to ensure that present and future generations can continue to enjoy our country in four wheel drive vehicles.

Trail Torque is produced four times a year and delivered via the NZFWDA Membership email database.
 This issue: Sept/Oct/Nov 2016 • Next issue Dec/Jan/Feb 2017



ANZAC SUMMIT
 Nothing like the wheel stand Kelsey popped on the “U by the road” hazard which wasn’t captured by camera.

IN THIS EDITION

- NZFWDA Committee2
- ANZAC Summit..... 2-4
- NZ Walking Access Commision.....5
- MTA Centenary - enter your vehicle5
- CZ Club Truck Challenge 2016 6-9
- 4x4 Events Calendar9
- Ahuroa Safari 2016 10
- NZFWDA Executive Reports..... 11-13
- Central Districts 4x4 Show..... 14
- Northern Zone Clubs 15-16
- Central Zone Clubs..... 17
- Southern Zone Clubs..... 18
- Kids Page 19
- West Coast Challenge.....20

There was at least four current 4wd Club presidents and a few past presidents competing at the Ratana (south of Wanganui) Round of the Central Zone Club Truck Challenge (CTC) held over ANZAC weekend. There was more than the usual number of National Trials competitors because their season had finished for the year. In fact "Old Dog", Les Thomsen a competitor "back in the day" won the event with a perfect score, taking no penalties at all. The scores were close at the top of the field, for instance I only took two penalties over the whole day and that left me in twelfth place.

This new site was within sight of the Ratana church and hadn't been used by the Manawatu Club before. Phil the farmer was a keen wheeler and only too happy to use his digger to contour and sculpt his land. He had



Ross Gregory from Wairarapa 4x4 Club bends his Jeep into the hazard.



Shaun Robinson from Manawatu Club competes in this Class 3 Patrol with all the fruit.



Kelsey van Waas from Tararua 4x4 Club driving her Suzuki up a hillclimb.

NZFWDA Executive

President	– Neville Dunton
National PRO	– Roger Seymour
Secretary	– Bobbie Kincaid
Treasurer	– Jenny Croasdale
Northern Zone President	– John Hickey
Northern Zone PRO	– Tony Burgess
Central Zone President	– Max Wheatley
Central Zone PRO	– Brent Samson
Southern Zone President	– Russell Quin
Southern Zone PRO	– John McDonald

NZFWDA Competitions Committee

National Competitions Officer	– Ron Sturme
Secretary	– Rachel Lobb
Northern Zone Steward	– Bruce McGregor
Steward	– Brent Samson
Treasurer	– Stacey Gwynne
Northern Zone Scrutineer	– Glenn D'Arth
Central Zone Scrutineer	– Wayne Buckthorpe
Scorer	– Jenny Samson

DISCLAIMER: The opinions expressed in this issue are those of the contributors and not necessarily those of the Association, Executive Members or the Trail Torque Editor.



Shona Stone from Mt Egmont Club takes the long drop in her Cruiser.

shaped a bank much like the ramp that had back flipped a buggy recently but no such heroics from our wagons. As we ended the day at the top end of the gulley we were next to the road and a number of passing cars stopped to watch the action. It was so good we should have been selling tickets. Series honcho Mark Watchorn made



Brendan Watchorn from Manawatu Club makes the dirt fly in his Class 2 Pajero.



Phil Law from Manawatu Club combines a lack of articulation with a lack of grip to make it hard for himself.

a welcome return to competition in his usual Class 1 Bighorn after a couple of years of spectating. There was a number of new entrants to the CTC, one of them was Taraua 4wd Club's Kelsey van Waas who had done some Club trips and one Club Champs event previously. Her dad has been well known in Wellington and Manawatu 4wd circles for many years. This second generation action was carried throughout the day with a number of father-son grudge matches between the Thomsens, Robinsons, Laws and Wyeths; both running their own vehicles or being cross entered in the same vehicle.

Steve Stewart has his first ever DNF, unfortunately in his first hazard when a CV joint let go in his Patrol. He had an attempt at repair and then driving in 3wd but ended up sitting out the rest of the day. There were a number of vehicles that just didn't start without parking on hills, leaving them running or by a tow. Come on guys, do your maintenance at home.

Phil the farmer, digger driver and comedian kept everyone in stitches showing the limitations of Independent Front Suspension and bald tyres.

After sending his son away to do some farm work at lunchtime Phil finished his day in the last speed section completely beached until some spectators ambled over to give him a push. The day finished with a barby and prizegiving as Phil had arranged for some spot prizes from Farmlands. In my group Kelsey van Waas and Daryl de Jong got prizes for their careful choices of what they could do and what they would try another time.

Another great weekend away, thanks to Phil for the land and camping. See you at the Final in Waiouru. Details and results at www.czctc.org.nz



Neil Blackie from CCVC Club paws for the sky with P76 power.



A good view of a selection of wagons entered in this Round, lined up to start their run at the hazards.



Graham Goble's Pajero on the extremely steep descent that was invisible from the start position.



Ross Gregory from Wairarapa 4x4 Club drives this Jeep in Class 1 with cunning and skill.



Dave MacGinnity from Windy City Off roaders drives his Jeep in Class 3.



Alan and Shona Stone share driving their Landcruiser in Class 2. Shona is another competition stalwart and frequent event organiser.

SELECTED RESULTS					
Overall	Name.....	Class.....	Score.....	Club	
1	Les Thomsen	3	64.39	Manawatu 4wd Club	
2	Greg Booth	2	87.24	Manawatu 4wd Club	
3	Graham Goble	2	103.63	Mt Egmont 4wd Club	
4	Marty Green	3	107.18	Capital Cruisers	
5	Stu Wyeth	3	137.15	Wairarapa 4x4 Club	
6	Kevin Galbraith	2	137.79	Wairarapa 4x4 Club	

FROM FINDING PEOPLE TO FINDING SOLUTIONS TO ACCESS ISSUES

A few years ago, Rod Smillie found himself sharing a hut deep in Whanganui National Park with a couple of Israeli secret service officers who had come to New Zealand for a holiday.

The men talked about the situation in Israel. One of the officers had a PhD in nuclear physics. "When you're stuck in a hut in the middle of nowhere, the only thing you can do is talk. You meet some amazing people," Rod says.

A lifelong passion for the outdoors, coupled with his interest in people prompted Rod to take on the role of Regional Field Advisor for the New Zealand Walking Access Commission, for the Taranaki, Whanganui and Manawatu regions. Rod, an ex-farmer, brings plenty of experience to the role, having worked 14 years for the Department of Conservation (DOC) and 25 years in search and rescue operations.

Search and rescue taught him a great deal about human psychology. He explains: "It used to be that when someone got lost, you'd simply swamp the area with people until you stumbled upon the missing person. Nowadays, lost person behaviour is a well-researched science, with psychological and statistical data to support it. You don't need huge numbers of people out searching."

Rod grew up in a small district called Matau, in eastern Taranaki. He farmed there until 1999, when he set up a pest control business. Pest control was the focus of his first role at DOC, in Whanganui. He recalls that role with a sense of pride.

"When I first started, the relationship with the local iwi was pretty strained, but in the end it was strong. It comes down to being honest with each other. We never promised anything we couldn't deliver. And we involved the community in everything we did."

He waxes lyrical about the Whanganui River and its surroundings, saying: "It's just a beautiful place. The seventh wonder of the world, as far as I'm concerned."

After Whanganui, Rod spent two years managing DOC's Palmerston North office, between 2013 and 2015. When the Commission's Regional Field Advisor position became available, someone told him he should go for it.

The new role means he can continue to do the things he loves: talk to people, listen to their issues, and help them figure out the solutions that work best for them.

"I've always been interested in problem-solving. It's good when you can be involved in an issue and listen to both sides. Quite often, both parties have to give something up. But there's generally a solution out there that everyone can be happy with."

In his spare time, Rod is studying towards a diploma in health and safety management. He tramps regularly, a good way to "keep the kilos off." He is a keen hunter and hopes to take his young sons along when they are a bit older – they are seven and nine. These outdoor experiences will teach them about resilience and "how you go about solving problems when you don't have Google at your fingertips," he says.

Most of all, his boys will learn the meaning of friendship.

"For me, the camaraderie is of more value than the hunting. Over the years, there have been some fantastic conversations and laughs," he says.

ENDS

For more information please contact:

James Heffield, Communications, New Zealand Walking Access Commission.
027 703 5296 // James.heffield@walkingaccess.govt.nz // www.walkingaccess.govt.nz

SHOUT-OUT FOR CARS



We will draw on modern manufacturers, car collectors and restorers to help present New Zealand's biggest and most interesting car exhibition. MTA invites those who own the country's most iconic, historic or just plain fantastic cars to share them with the public. If you have a car that should take its place in the line-up (or know someone who has one) please contact Kylie.Robinson@mta.org.nz and pass the word around. We intend to have at least 300-400 carefully selected cars to show off.

**To offer your car for display, please contact MTA Centenary Planner
Kylie Robinson kylie.robinson@mta.org.nz**

CZ Club Truck Challenge 2015-2016

ROUND 5 - WAIOURU, HOSTED BY DESERT DEFENDERS OFFROAD CLUB, MAY 14 AND 15

ARTICLE AND PHOTOS BY ANDREW GEE



Marty Green's Class 3 Cruiser spansks the hill climb.

The final Round was put on by the cocky Desert Defenders Club even though Robert had a bad ankle and Craig had a bad shoulder. They sent their wives to Auckland for the weekend and set about holding the Club Truck Challenge (CTC). Pretty simple, book the Donald's Farm, book the domain and square away a meal. So come the day they find the domain double booked, then they needed help from the Manawatu Club to mark out some hazards, at least the farm was where they left it. Thanks to Brendan, Lee, Steve, Robert, Craig and Mark for laying them out. Still the event was another resounding success and as far as

the competition went, there was another different winner and positions were being swapped over both days of competition. On the trip from Wellington just some 4km short of the competition site my Wrangler suffered a broken rear axle and left me stuck on the side of the road. Fortunately my Brother in Jeeping Bruce Tustin was nearby and he didn't hesitate to offer the use of his trailer to rescue me. Pretty soon after one of the Desert Defender Club Organisers also drove past and later a couple of complete strangers also stopped to check I wasn't stranded, my faith in human nature was restored. Managing anything for the rest of the weekend would



Kelsey van Waas from Tararua 4x4 Club wishes the Suzuki had power steering to stay inside the red peg.



First time entrant Karen from Auckland under the watchful eye of Wayne uses power to finish the hazard.



Robert Stout from Desert Defenders still searches for the ideal Club Truck, this being his fourth truck in just over a year.



Lee Turner drives a popular choice of many entrants the Pajero, in Class 2.



Desert Defender kids slide down the churned up dirt of one of the hill climbs.

be a bonus for me and that included finishing the Series in second overall, mostly thanks to Bruce who let me cross enter in his Wrangler and also giving me a ride home. Thanks Bruce you're a true gent and staunch Club member (in fact Bruce has been a member of CCVC for 20 years and a past President of the Valley 4wd Club).

At the end of day one Jeep mounted Ross and Bruce were both on perfect scores with just their speed section times to separate them. Some prospective Desert Defenders members watched the Event on Saturday and had a go at some of the hazards and found them harder than they looked. We all had dinner in Waiouru after the ladies showed Robert how to turn on the oven.

We had some of our new competitors from the Ratana Round make the trip north and some Desert Defender regulars came down from Auckland to have a go. Trials stalwart Hintzy in a bit of a reversal brought his parents with him rather than the other way around. Judith Hintz was a keen competitor and hit the hazards in her Suzuki with a lot of skill. Wayne and Karen shared the driving of their Terrano in their first try at a trials type event after taking part in tagalong trips. Day two finished and after the calculations were done, Alan Stone took the weekend in a Class 2 machine and Ross came in fourth



Judith and John Hintz show their little boy Dave how to drive a trial in their Class 1 Suzuki.



Ross Gregory was leading the competition after the first day.



Bruce Tustin driving a Class 3 Jeep heads through 20 points.



Kelsey van Waas from Taranui 4x4 Club driving her Suzuki looks for the next pair of pegs.



Ross Gregory from Wairarapa 4x4 Club clings on to the high line in his Class 1 Jeep.

4WD Off-Road Insurance



Whilst enjoying the 4WD off-road experience your insurance needs are very specific and in most cases your standard motor vehicle policy does not cover you for off-road activities and club events.

In conjunction with the New Zealand Four Wheel Drive Association this 4WD Off-Road insurance product has been specifically designed for **your** needs and is available only to club members. The programme has been in place since 1999 and its longevity speaks for itself.

Vehicles are covered comprehensively for off-road and on-road use and the policy accommodates heavily modified vehicles which are often difficult to insure.

Going into forests on a non-club excursion? Ask about the Fire Service Liability extension.



Phone (09) 827 7266
PO Box 1412, Shortland Street, Auckland
insure@barley.co.nz www.barley.co.nz



Judith Hintz has a lot of experience in competing in Club Champs and gave a good showing at the Club Truck Challenge.



Bruce Tustin from Wellington Jeep Club made the tight corner that cross axled most people and heads out through the blue pegs.

in a Class 1 machine giving lie to the idea that super modified Class 3 will always win.

This Round concluded the 2016 Series after four Events had been held around the lower North Island. The overall positions were calculated from your best

three results allowing people to drop a bad result or the option of not travelling to all the Rounds. Next season is looking very promising with a new super modified class 4 (although the vehicle still needs wof and rego) being introduced and the calendar starting to full out. The 2016-17 season will

start in the Wairarapa on September 25. We will then be going to the Taranaki on October 29 and later in Wellington, Capital Cruisers have promised to run a Round. Rules and calendar on www.czctc.org.nz, or ask a question on the "Events" section of the NZFWDA internet forum.



Robert Stout gives the Pajero plenty of welly.



A good view of a selection of wagons entered in this Round, lined up to start their run at the hazards.



Lee Turner from Manawatu 4wd Club has his eyes on the blue pegs.



Series organiser Mark Watchorn returned to competition this year in Class 1 and placed second overall in the Class for the Series.

SELECTED RESULTS FOR ROUND 5

OA	Name	Class	Score	Club
1	Alan Stone	2	109.17	Mt Egmont
2	Marty Green	3	150.52	Capital Cruisers
3	Bruce Tustin	3	153.76	Wellington Jeep
4	Ross Gregory	1	191.57	Wairarapa 4x4
5	Andrew Gee	3	200.16	Valley 4wd
6	Brendan Watchorn	2	229.42	Wairarapa 4x4

SELECTED RESULTS FOR 2016 SEASON (BEST 3 SCORES)

OA	Name	Class	Score	Club
1	Marty Green	3	296	Capital Cruisers
2	Andrew Gee	3	291	Valley 4wd
3	Ross Gregory	1	289	Wairarapa 4x4
4	Dave McGinnity	3	285	Windy City Offroaders
5=	Alan Stone	2	282	Mt Egmont
5=	Brendan Watchorn	2	282	Wairarapa 4x4

www.czctc.org.nz



Judith Hintz has a lot of experience in competing in Club Champs and gave a good showing at the Club Truck Challenge.



Mark Watchorn maxes out the rear articulation of the Class 1 Bighorn.



The Olympic scoring panel left to right Wayne, Craig, Alan and Rae.

4x4 Events/Trips/Runs

Email your events to editor@nzfwda.org.nz



All due care has been taken entering these details, NZFWDA cannot take responsibility for any changes or inadvertent inaccuracies. Potential participants should contact the event organiser.

16 - 17 SEPTEMBER 2016

Round 5 - MAINLAND SUPERWINCH SERIES, Timaru, venue to be confirmed. Friday night stages, Saturday day stages. For more information email Vicky.mainlandwinching@gmail.com

14 - 15 OCTOBER 2016

Round 6 - MAINLAND SUPERWINCH SERIES, Dunedin, event held at Ceder Creek site. Friday night stages, Saturday day. For more information email Vicky.mainlandwinching@gmail.com

22 OCTOBER 2016

NOVAWIN - BATTLE OF THE PALACE 2016. Limited to 12 Teams. For more information email possumpalace4x4@gmail.com

12 NOVEMBER 2016

Round 1 - National 4x4 Trial Series. Karakari Road, Whatawhata, Waikato. For more information visit: www.nz4x4trials.co.nz

12 - 13 NOVEMBER 2016

AHURUA SAFARI 2016. See next page for details.

10 DECEMBER 2016

Round 2 - National 4x4 Trial Series. Bay of Plenty. For more information visit: www.nz4x4trials.co.nz

21 JANUARY 2017

Round 3 - National 4x4 Trial Series. South Waikato. For more information visit: www.nz4x4trials.co.nz

11-12 FEBRUARY 2017

Round 4 - National 4x4 Trial Series. Wellington. For more information visit: www.nz4x4trials.co.nz

11-12 MARCH 2017

Round 5 - National 4x4 Trial Series. Taranaki. For more information visit: www.nz4x4trials.co.nz

15 APRIL 2017 (EASTER)

Round 6 - National 4x4 Trial Series. Manawatu. For more information visit: www.nz4x4trials.co.nz

APRIL 2017 (EASTER WEEKEND)

WEST COAST 4X4 CHALLENGE. See page 20 for details.



SUPPORT THE AHUROA RURAL VOLUNTEER FIRE SERVICE

SPECIAL POINTS OF INTEREST:

- NZFWDA members only
- Free Camping
- Pay online
- Max 60 vehicles
- All registrations by 22nd October
- No payments on the weekend
- Cash Bar only
- Tuff Run Vehicles - must have mud tyres
- Vehicles on Shiny Run must have minimum of good all terrain tyres,
- WOF and Rego recommended for Shiny Run
- All trucks will be checked for safety by RORC scrutineers

VEHICLES MUST HAVE:

- 1 Mud tyres or AT (Shiny Only)
- 2 First Aid Kit
- 3 2Kg Fire Extinguisher
- 4 Spade
- 5 Recovery Straps
- 6 Approved recovery points

Ahuroa Safari 2016

NOVEMBER 12-13TH



Rodney Off Road Club Inc.

Come and support the Ahuroa Rural Volunteer Fire Service in the North West of Auckland, near the Kiapara Harbour.

It will be a fabulous family weekend of mud, fun and friendship, just like all our previous ones.

Choose from either the Tuff truck or Shiny runs.

Those brave enough can camp and there will be marshmallows for the bonfire.

Confirmation Email will contain more information and directions



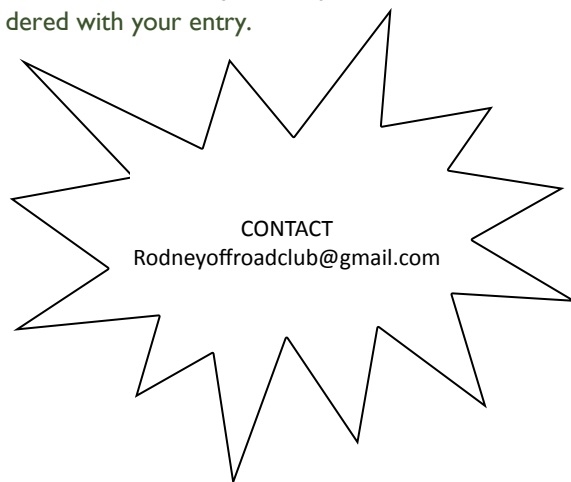
This maybe our last separate run for the tuff trucks due to land access shortages & issues.



The Line up

Food and Beverages

Included in your entry fee is you and your passengers dinners on Saturday night. and breakfast Sunday morning. Lunches for Saturday can be pre ordered with your entry.



CONTACT
Rodneyoffroadclub@gmail.com





NZFWDA President

Neville Dunton

P: 07 578 2689 ---- M: 027 446 5634 ----E: president@nzfwda.org.nz



One of the stand out presentations of the AGM was John Hickey's presentation and summary of the new HSWA which passed into law in April this year. Whilst the politicians and bureaucrats all touted this piece of legislation as not affecting the activities of volunteer organisations it still seems the devil is in the as yet undeclared legal detail and, from our (NZFWDA) perspective, it does appear we will need to collectively and individually be much more aware of and responsive to the Act and, in particular, to be informed and aware of when or if we may need to be extra proactive in terms of taking action to reasonably and responsibly manage risk.

Of course, all of us claim to be cognisant of, and practice, the art of safety but it does occur, that if that were true, there would not be any need for the new Act! It has been claimed that, statistically, New Zealand has a poor standing in the safety in employment (and play) stakes and the new Act has been promulgated to bring a new level of awareness of the need to more rigidly apply basic safety standards in all the many things

that we do but with quite severe penalties for those who might be proven to be in breach of their obligations under the Act.

So, one of the main activities for the Executive since the AGM, has been to review and consider the myriad of NZFWDA activities that might perhaps expose the Association, affiliated Clubs, and Members, to unintended ensnarement by the Act's many provisions. This is where the devil is very definitely in the detail which is perhaps best described as being rather less detailed than many of us might wish. Notwithstanding, a very committed sub committee of the Executive, headed by John Hickey has quietly been developing a series of documents which we hope to be able to produce and distribute to Clubs and members to assist you in your decision making around your various 4x4 activities and events. The last meeting of the sub-committee and Executive was held in Wellington on 11th September; this was a very full day of information gathering and policy production led by Grant Purdie who has very kindly agreed to a secondment to the

Executive HSWA sub-committee.

There are numerous Safety Plans and policies already in place amongst our affiliated Clubs and membership and some of these have been made available to the Executive sub-committee. It is abundantly evident that safety in our 4WD activities has been actively followed for many years. Sure there have been a small number of unfortunate outcomes but, as a general statement, I believe NZFWDA activities and events have been, and continue to be, held within a framework of concern for, and practice of, appropriate and reasonable safety parameters. What the Executive is intending to produce is a series of documents which hopefully will be useful for Clubs and Members to consistently consider and apply safe activity and event practices. The underlying message is we want everyone to go out and enjoy themselves and to get home safely.

Other than my participation in the AGM Conference self-drive I have regrettably been unable to participate in any other 4WD events and I have finally had to concede I am unable to return to National Trials competition after my wee prang of late 2014. Hopefully I will be able to get out and about in more extreme safari type events in the new year. It will certainly be time.

Take care out there.

Neville Dunton
President, NZFWDA Inc



Neville, Max, Grant, John, Roger, John, Tony and Bobbie behind the lens.

National Competitions Officer

Ron Sturme

E: compofficer@nzfwda.org.nz



Trials Competitions Report

With the next Trials Season coming upon us fast, we finally now have six Rounds secured for the 2016 – 2017 Season.

South Waikato stepping up at the last minute when another Club unfortunately pulled out. We have Waikato holding the first Round after not holding any trials for a number of years. Fantastic to see the enthusiasm from these Clubs.

2016 – 2017 Trials calendar:

Waikato	12 Nov 2016
BOP	10 Dec 2016
South Waikato	21 Jan 2017
Valley	11 Feb 2017
Mt Egmont	11 Mar 2017
Manawatu	27 Apr 2017

It's appreciated that a lot of volunteer work goes into running

these trials. Without all these Clubs participation we would not have a Season.

As I mentioned in my last report, the Comps Committee has been working with the Safety Design Team (SDT) in regards to the concerns arising from compression injuries occurred through the last Trials season.

The Comps Committee has taken the recommendations from the SDT and in the interest of safety, implemented rule changes for the coming Season which included roll cage clearance, steel plate above occupants and rules around seatbelt mountings.

To date a Special Meeting was requested and held to discuss these changes with competitors. It was a very informative meeting with several valid comments and

constructive ideas. It was decided the Comp Committee and SDT would review the rule changes taking on board the new ideas brought forward from competitors.

After lengthy discussions and reviewing the original decisions, the Comp Committee and SDT have concluded that it is clear, the original recommendations were accurate and the committees obligation to health and safety were reinforced by Work Safe.

As this is hard for some competitors to accept, this is for the betterment of the sport now and for the future.

We can now move forward on a positive note and I wish the competitors all the best for the coming season.

Ron Sturme
NCO



Central Zone President

Max Wheatley

E: czpresident@nzfwda.org.nz



As I sit in front of the computer wondering what to tell you about I see that this is the 12th column I have written for TT, hopefully I haven't bored you completely, so what do you want to hear about in the next columns ??

Off road

Not a thing..... Doing a little job for the local off road racing Club then I will organise a trip some where.....

4WD Show.

The annual Central Districts 4WD Show has come and gone and if you didn't attend you will have read a few reviews at least.

This year was bigger, more people through the gate, generally bigger and better. The only area we were down on was people for the swap meet part, so what does it take to get you to come to a swap meet, let us know because we want you there.

In the workshop

Far too cold for me to be out there..... Now that spring is coming maybe I will get out there and get some of those jobs out of the way.

Max



Northern Zone President

John Hickey

Mobile: 0274 531 247 --- Home 09-630 4904 --- Email: nthzpresident@nzfwda.org.nz



As you may recall Russell De Luca organised a meeting for Waitawheta with Tinaka Mearns as the Acting National Recreation Manager for DOC at her Hamilton office. Russell De Luca, Steve Morley and Steve Whitton attended it because the meeting was about Waitawheta. Tony Burgess, Northern PRO and I as Northern Zone President also attended together with Neville Dunton the National President and Roger Seymour, the National PRO who came up from Wellington for the meeting.

The meeting was primarily about work required to open Waitawheta. We were also able to discuss the structure of any management agreement for Waitawheta and DOC matters generally. While we have not yet got a result, the meeting showed the Association Executive works together.

As you should know the National Conference and AGM held in Wellington on the weekend of 21 and 22 May 2016:

- The Saturday Conference was organised by the Cross Country Vehicle Club of Wellington. We met in the carpark near the hotel where the delegates were staying and they took us out

to the Akatarawas. The Council has purchased a large forestry block and the local Clubs have access on favourable terms. It was very interesting to be able to discuss matters with CCVC and other Clubs. Local Clubs have co-operated to build the Orange Hut and fireplace/BBQ area adjoining it. It is a valuable resource.

- At the AGM on the Sunday, the existing executives were re-elected. I presented, as part of the AGM, a paper on Health and Safety and it was well received. I have had a number of enquiries from around the country since for a copy of the PowerPoints which are available on the Association website.

Our last Zone meeting was on 18 June. Since that meeting on Tuesday 2nd August I spoke to Manukau Club about Health & Safety. We discussed the Association providing documents for member Clubs. I am currently heading a subcommittee which is working on this (more on this in due course). So that we can work on guideline documents we have been considering the issues and on a policy so that we can achieve a sensible and useful set of documents. The risk is that we bash out a set of documents that

won't work properly. There has been some robust debate amongst the Executive!

On a personal note I haven't been able to do much Four Wheel Driving. The Camel has been in the workshop and I hope it will be back on the road soon. The 107 hibernating and the 110 has been working as the family bus. My wife Penny and I and three of our daughters (the fourth is in France) went to see the movie Hunt for the Wilderpeople. It was a great movie, if you haven't already seen it I recommend it. It even includes Four Wheel Driving...

In the New Zealand Herald, Wednesday 15 June 2016, page 8, there was a very interesting article about the make and colour of vehicles and how it reveals the real you. Since I have a yellow vehicle, a blue one, black one and a grey one and my wife also has a silver one I must have several different personalities...

Anyway whatever colour your vehicles have a great time Four Wheel Driving.

John Hickey.

CENTRAL DISTRICTS 4X4 SHOW.

The consumer trend toward sports utility vehicle has been good for Off-Roader enthusiast Clubs, with growth being reported among many lower North Island organisations.

Trevor Hendra, convenor of the Central Districts Four Wheel Drive Club's Off-Road Vehicle Show at Manfeild on July 3, says the big upsurge in national sales of SUVs and crossovers has in turn fueled memberships of organisations that provide the safest, most responsible use of these vehicles.

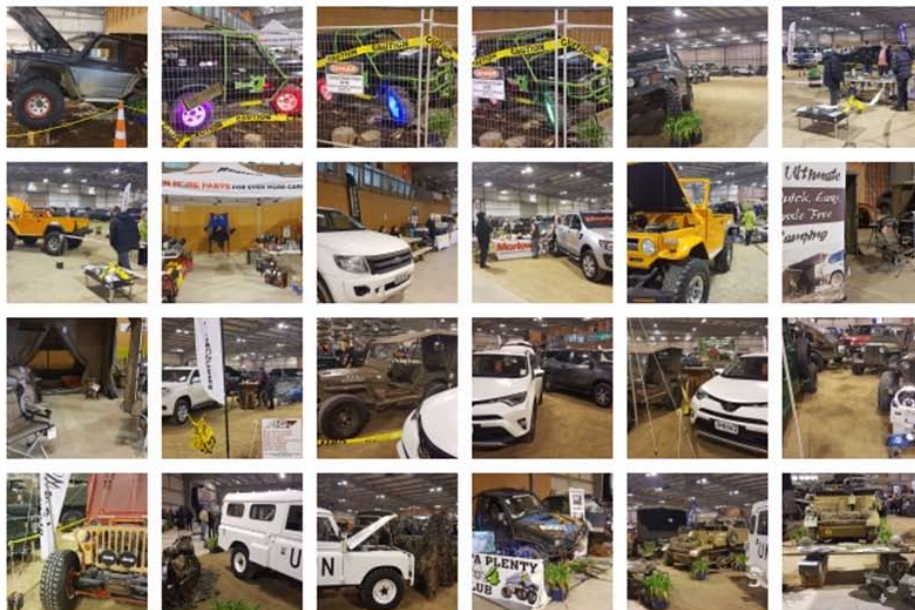
As the Club interest grows, so too does the span of vehicle types within their circle. While highly modified bigfoot-style vehicles remain popular, there is also an increasing trend for members to adventure in basically unmodified production models – 'shinies' in Club parlance.

That about half the vehicles in the Club fall into this category reminds that today's four-wheel-drive vehicles can be impressively versatile.

Robbie Shailer of Central Districts Four-Wheel-Drive Club, says the upcoming show at Manfeild will be a good opportunity to learn about off-roading. The Club founder member says he bought his 2.8-litre turbodiesel second-hand and it has proven to be a reliable, inexpensive three-in-one rig – that is, it performs equally adeptly for work, family and fun. New springs and shocks have raised the ride height but otherwise "it's stock standard. I use it for work as well four-wheel-driving. I really love it, it's the only vehicle I feel safe in."

Mr Shailer says he has taken the Pajero through some very tough terrain and he's proud it has performed well.

However there are also plenty of times where he, friends and family have gone on Club expeditions that are a lot less extreme and just as much fun – a drive on a paper road in the country or along a beach.



Central Districts 2nd Show and Shine, held on the 3rd July 2016. SOURCE centraldistricts4x4.co.nz

"That's the thing about our Club. We cater for all levels. You don't have to do tough stuff – you can do a shiny run down the beach, maybe stop for a picnic."

"When we go out you do not have to do the tough areas, there are always ways around. You pick and choose what you are comfortable with."

Mr Hendra agrees: "Basically, these days we have all types of events for all styles of vehicles and everyone gets to have a lot of fun."

"There are a lot of people who now simply want to go out and enjoy their vehicles without risk of damage and we can cater for that quite easily."

Regardless of how arduous the outing, Clubs reinforce that the ticket to adventure requires responsibility. There's a right way and a wrong way to explore beyond the urban jungle, the men say and joining a Club, as many Kiwis do, is definitely the right way.

"Clubs work really hard to promote four-wheel-driving as a sport and as a hobby to be undertaken in as safe an environment

as possible," Mr Hendra says.

"What annoys me are the people who get these vehicles, think they are bullet-proof and go out and cause havoc," Mr Shailer says.

"You're better off to join a Club, get taught how to do things and so forth. It's commonsense to me. The first rule is you never go out on your own – you always have two vehicles so, if one gets into trouble, the second one is there to help get you out."

"It's also about friendship and doing something the whole family can enjoy – in fact, you don't even need to own a vehicle to join. There's always a spare seat so you can come along and get to know what it's all about."

Having responsible fun is a central theme for the Club's annual show, which returns to Manfeild after a successful debut last year. Trade stands and a diversity of off-road-associated organisations – from the Low Volume Vehicle Technical Association to talk about how to ensure modifications are level through to military vehicle collectors - will be at the stadium.

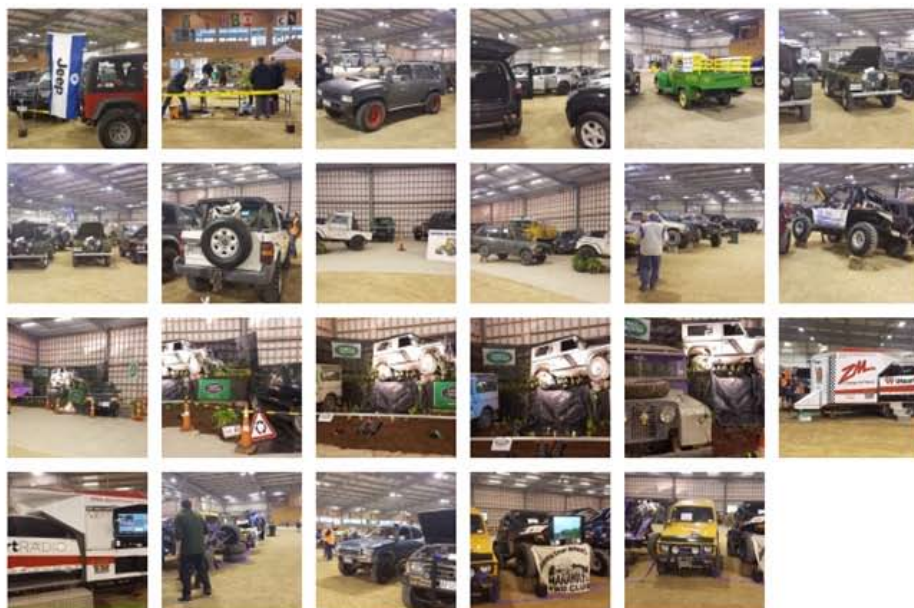
The display area will also include a diversity of vehicles, from the latest showroom models to some vintage gems.

Manfeild Park is a good fit for car show, says venue Chief Executive Julie Keane, pointing out that it also hosted annual automotive swap meets for the vintage car and hot rodding movements.

"Those events have massive National status and always draw impressive turnouts of vehicles and attendees."

The four-wheel-drive day offers not only a good opportunity for bargain hunters – with stalls selling a wide range of specialist mud and sludge gear - but also provides a chance for anyone interested in off-roading and off-road vehicles to look at, and judge, the best and boldest.

For further information:
Julie Keane,
Manfeild chief executive,
CEO@manfeild.co.nz
027 659 9666



Central Districts 2nd Show and Shine, held on the 3rd July 2016. SOURCE centraldistricts4x4.co.nz

Northern Zone Clubs



4X4 Challenges NZ Inc.

PO Box 37 143, Parnell, Auckland
President Tim Fensom : 027 487 1733
president@4x4challenges.org.nz
Secretary Ashley Lucas : acl@xtra.co.nz



Auckland Four Wheel Drive Club Inc.

PO Box 6712 Wellesley St Auckland
President Jeremy Walker :
president@auckland4wd.org.nz
Secretary Tariq Wasim :
secretary@auckland4wd.org.nz
Meet Third Monday of every month at 8pm,
 Vintage Car Club, Fairfax Ave, Penrose.
auckland4wd.org.nz

Bay of Islands 4x4 Club

PO Box 443, Kerikeri
President Andrew Graham
Secretary Martin Rivers : 021 293 7215 : mart.rivers@gmail.com



Bay of Plenty Four Wheel Drive Club

P.O.Box 2300, Tauranga
President Zane Edlin : 021 936 535 :
bop4x4club@gmail.com
Secretary Ashleigh Gaudion : 027 726 6658 :
bop4x4club@gmail.com
Meet Tauranga Sport Fishing Club, Sulphur
 Point, Tauranga on the first Thursday
 of each month at 7.30 pm
www.bop4wd.org.nz



Counties 4 Wheelers

PO Box 72 1394, Papakura
President Chris Weaver :
cjweaver@vodafone.net.nz
Secretary Lorraine Chung : 027 242 5968
Lorraine.Chung@asb.co.nz



Cozzie Four Wheelers

PO Box 4133 Hamilton
President Morgan Eades : 021 992 277 :
molus5@gmail.com
Secretary Andrew Boulton : 021 821 159 :
andrewb@powderprojects.co.nz
Meet Third Tuesday most months, 7.30pm
 Hamilton Cosmopolitan Club,
 Claudelands.

East Coast Four Wheel Drive Club

PO Box 2180, Gisborne
President Rod Dear : 06 868 4882 : rjandradear@hotmail.com
Secretary John Saxby : 027 441 9985



Eastern Bay Twin Diff Club Inc.

PO Box 588, Whakatane 3120
President Ron Sturme : 027 226 7915
r.dsturme@xtra.co.nz
Secretary Warwick Farmer : 027 307 7919 :
farmerwg_71@hotmail.co.nz
Meet First Wednesday of the month,
 The Edgumbe Cosmopolitan Club.

EBTDCLUB@gmail.com



Geyserland 4WD Club

PO Box 2085, Rotorua
President George Estcourt : 021 338 312
president@geyserland4wd.co.nz
Secretary George Estcourt : 021 338 312
secretary@geyserland4wd.co.nz
Meet First Wednesday of every month
 (except January) 7.30pm at "The Great
 Kiwi Ale House".
www.geyserland4wd.co.nz

Hamilton Districts 4 Wheel Drive Club.

President Ken Bowater : 027 495 8989 : president@hd4wd.co.nz
Secretary Shelley Pennefather 021 0251 4926 :
goldlinex@clear.net.nz
www.hd4wd.co.nz

Kaitaia 4WD Club Inc.

PO Box 125, Kaitaia 0441
President Greg Hodgson : 09 409 4167 : greg.barb@xtra.co.nz
Secretary Dave Currie : 09 406 7518
Meet First Monday of the month, 7pm, Kaitaia RSA.
kaitaia4x4club@hotmail.com



Kauri Coast 4WD Club

PO Box 18, Dargaville
President Ron McCloy : 09 405 8316 : 021 063 4623
president@kauricoast4wdclub.co.nz
Secretary Sam Whalley : 021 2222 2370 :
info@kauricoast4wdclub.co.nz
Meet Second Wednesday of the month at
 7.30pm Northern Wairoa Boating Club

www.kauricoast4wdclub.wikispaces.com



Land Rover Enthusiasts Club (Rotorua)

PO Box 2113, Rotorua 3040
President Daniel Honore : 021 237 5688 :
froghorn@hotmail.com
Secretary Allan Hoffman :
allan.hoffman@rdc.govt.nz

www.lrerot.wikispaces.com



Land Rover Owners Club (Auckland)

PO Box 303-006, Auckland 0751
President Jeremy Bleakley : 021 289 7009
Jeremy@albanyins.co.nz
Secretary Neil Abbott : 021 281 1509
neil.abbott@manumarine.com
Meet First Monday of the month, 7.30pm
 The Normanby Pub, Normanby Rd, Mt Eden
www.lroca.org.nz



Manukau Four Wheel Drive Club Inc.

PO Box 75-199, Manurewa
President Bernie Konz : 09 236 6856
Secretary Joy Browne : 09 238 7298
Meet First Tuesday of month (except Jan),
 7.30pm at South Auckland Car Club,
 1R Great South Rd, Papakura.

www.manukau4wd.org.nz



Northland Family Four Wheelers

37 Tui Glen Place, Glenbervie RD3 Whangarei 0173
President Colin Thorburn
nglasgow300@gmail.com
Secretary Brett Hogan : 09 437 7438
onehogan@xtra.co.nz
Meet Second Thursday each Month,
 clubrooms in Glenbervie.
www.nffw.net



Norwest OHV Club Inc.

PO Box 171, Kumeu Auckland
President Ben Blyth
president@norwestohv.org
Secretary Dan Farley
secretary@norwestohv.org
Meet Second Monday of the month, 7.30pm
 Paddy's Bar, Shamrock Drive, Kumeu.
www.norwestohv.org

NZ Jeep Club

c/- 196 Tuapiro Road, RD3 Katikati, 3170
President Bryan Williams : 021 931 360 : michelle.bryan@xtra.co.nz
Secretary Sandra Cohen : 07 549 1823 : scohen@xtra.co.nz



Port Valley 4x4 Club

President Dan Barnett : dan@drpc.co.nz

Northern Zone Clubs continued...



Rodney Off Road Club Inc.

32 Scott Rd, Stanmore Bay, Whangaparaoa, 0932
President Nigel England : 09 420 5480 or 021 743 869 : nigelengland@mexnet.co.nz
Secretary Stephanie Williams : 09 426 0833 or 027 479 5115 : stephaniealice66@gmail.com
Meet Second Wednesday of every month, 8pm at the Wade Hotel, Silverdale

www.rodneyoffroadclub.co.nz
rodneyoffroadclub@gmail.com



Shore 4 Wheelers Inc.

PO Box 100-404, NSMC, Auckland
President Phil Clark : 021 848 429 : phil@force4.co.nz
Secretary Rosemary Willis : 021 297 9917 : madrose@vodafone.co.nz
Meet Second Wednesday of the month 7pm at North Shore Rod & Customs Car Club, 4/26 Hillside Rd, Glenfield.



South Waikato 4WD Club

C/- 211 Overdale Road, RD3, Putaruru 3483
President Craig Tomalin : 027 490 6785
Secretary Phil Hobart :
Meet First Wednesday of each month 7.30pm at the Tirau Hall.

Sulphur City 4 Wheelers

c/- PO Box 10085, Rotorua 3046
President John Farrow : di.farrow@clear.net.nz
Secretary Keith Spicer : kwspicer@ihug.co.nz



Taupo 4WD Club

PO Box 457, Taupo
President Peter Kelly : 07 376 9041 Mobile 021 906 639 : peterkellynz@gmail.com
Secretary Matthew Burton : 021 024 10351 : floatingkiwi@yahoo.co.nz



Thames Valley 4WD Club

C/- K. Barriball, Waitakaruru, R.D.6, Thames
President Rob Pettifer : 021 902 309 : rtpettifer@gmail.com
Secretary Keith Barriball : 07 867 3330 : buddog@ihug.co.nz

United 4WD supporters

C/- Almara, RD 4, Albany, Auckland
Secretary Carmen Mills : 09 426 8830 : u4wd@nzfwda.org.nz



Waikato Four Wheel Drive Club

PO Box 9313, Hamilton
President Greg McDell : 07 824 6640 or 027 242 7405 : president.waik4wdclub@gmail.com
Secretary Chris McDell : 021 440 871 : secretary.waik4wdclub@gmail.com
Meet Second Thursday of every month 8pm at the Scouting Hall on Storey Ave.



Whangamata 4x4 Club

c/- 2666E Waihi - Whangamata Rd, RD1, Whangamata 3691
President Graeme King : whangamata4x4@gmail.com
Secretary Kris Glucina
Meet Second Tuesday at 7:30pm at the

www.whangamata4x4.org Whangamata4x4@gmail.com



Whangarei 4WD Club

P.O.Box 1850, Whangarei
President Colin Jaggard : 09 437 1816 or 027 654 8882 : jag5@ubernet.co.nz
Secretary Kath Jaggard : 09 437 5560 or 021 050 8935 : secretary@whangarei4x4.org
Meet Second Tuesday of month at 7.30pm Kamo Club.

www.whangarei4x4.org

Wilderness Ridge Riders 4WD Club

PO Box 101469 NSMC Auckland 0745
President : Quentin Smith
Secretary : Barbara McMinn : 027 240 7939 : jeepinnz@xtra.co.nz

The NZFWDA Executive are volunteers who administer the Association. Divided into three regional zone committees - Northern Zone (North Cape to Taupo), Central Zone (Taupo to Wellington), Southern Zone (the entire South Island) and a Competition Committee.

THE NEW ZEALAND FOUR WHEEL DRIVE ASSOCIATION

- VALUES THE HIGHEST SAFETY STANDARDS BEFORE, DURING AND AFTER ALL 4WD ACTIVITIES.
- ENDORSES RESPECT AND CARE WHILE PARTICIPATING IN 4WD ACTIVITIES IN THE ENVIRONMENT.
- ACKNOWLEDGES THE CONTRIBUTION OF ITS MEMBERS AND THEIR VALUES.
- VALUES AND RESPECTS LAND OWNERS AND LAND USERS.
- ENCOURAGES NON- DISCRIMINATION OF ALL PARTICIPANTS.

Advertising in Trail Torque

Quarter Page(94mm x 135mm) \$150
 Half Page(190mm x 136mm) \$300
 Full Page(190mm x 278mm) \$600

These prices are per edition of NZFWDA Trail Torque and do not include GST. Invoices are sent yearly and bookings must be made for a minimum of one year.

Advertisements must be received copy ready and sent as jpeg or pdf to: Bobbie Kincaid: editor@nzfwda.org.nz

All advertising ("advertising") in Trail Torque is on the basis that

1. The Editor at the Editor's discretion may accept or reject any advertisement without giving any reason.
2. The New Zealand Four Wheel Drive Association ("the Association") does not endorse or recommend or warrant any advertiser or advertising. The Association at its absolute discretion reserves the right to at any time accept or refuse any advertisement or advertising.
3. The Advertiser must ensure and warrants to the Association that all relevant laws and advertising guidelines are observed for the advertising.

Central Zone Clubs



Capital Cruisers 4WD Club

PO Box 38725, Wellington Mail Centre

President : Amelia Dale : Amelia.Dale@MeridianEnergy.co.nz

Secretary : Marty Green : marty@activegroup.co.nz :



Central Districts

PO Box 130 Feilding

President Trevor Hendra : 06 323 3458

trevor.hendra@gmail.com

Secretary Roger Bird : 06 328 5881

bird@parklee.co.nz

Costa Plenty 4x4 Club

c/o P O Box 130 Feilding 4740

President Laurie Goldfinch : 027 246 6133

Secretary Nicki Andersen : costaplenty@hotmail.co.nz



Cross Country Vehicle Club (Wellington) Inc.

PO Box 38-762, Te Puni, Wellington 5045

President Neil Blackie : President@ccvc.org.nz

Secretary Paul Sadlier : secretary@ccvc.org.nz

Meet Second Wednesday of each month at 7.30pm Petone Workingmans Club, Udy St.

www.cvc.org.nz



Desert Defenders Off Road Club

President : Robert Stout : 06 385 9435

rdpjtout@gmail.com :

Secretary : Kandy Mott : 06 385 8090

kandy@motts.co.nz :

Meet @ Stout's or Motts.

<https://www.facebook.com/DesertDefenders4wd>

Featherston Family 4x4 Club

c/- 3 Donald Street Featherston 5710



Feilding 4x4 Club

C/- 39 Seddon Street Feilding 4702

President Myles Norris

Secretary John de Burgh : jdeburgh@ihug.co.nz

www.feilding4x4.org



Hawkes Bay 4WD Club

PO Box 1423 Hastings

President John Jones : 06 877 5868

jandhjones@xtra.co.nz

Secretary Max Charman : 06 844 2658 or

027 444 7734 : secretary.hb4wdclub@gmail.com



King Country 4WD Club

11 Waitete Road, Te Kuiti.

President Jeff Clarke : 07 847 7308 :

jeffc@ihug.co.nz

Secretary Jenni Templeton : 07 878 7823 :

ijtempleton@xtra.co.nz

www.kc4wd.co.nz



Kiwi 4x4

President Cindy de Giorgis :

kiwi4x4nz@gmail.com

Secretary Matthew Stunnell

secretary@kiwi4x4.org.nz

www.kiwi4x4.org.nz

Levin 4WD Club

PO Box 216, Levin 5540

President Paul Shivanan : 04 904 6872 : pshivanan@gmail.com

Secretary Ken Douglas : 027 530 2614 : ken.douglas@xtra.co.nz



Manawatu 4WD Club

PO Box 5176, Terrace End, Palmerston North

President Greg Booth : 027 256 0470 :

gb.wrangler@gmail.com

Secretary Bruce Gilmore : 06 323 1119

gilmore@crossslot.com

Meet Third Wednesday of month at 7.30pm

Awapuni Community Centre,

Newbury St, Palmerston North

www.m4wdc.org.nz



Mt Egmont 4 Wheel Drive Club Inc.

PO Box 8014, New Plymouth

President Rowan Huckstep : 027 480 3097

Secretary Elle Newman : 06 756 8673

elle.moratti@hotmail.com

Meet

Second Wednesday of month,

7.30pm at the Inglewood Club.

egmont4wd.co.nz



Offroad Wairarapa 4x4 Club

PO Box 405, Masterton 5840

President Gavin Oakly : 06 377 3862

Secretary Mike Rolls : 06 370 9328

mikeandlizrolls@xtra.co.nz

Meet

Second Tuesday of month (except Jan)

at 35 Perry Street, Masterton 7.30pm

www.orw.org.nz



Taranaki Family 4x4 Club

511 Mangorei Rd, New Plymouth

President Peter Cooper : 06 762 2905 :

4wdfun@naki4wd.org

Secretary Kim Voss : 06 758 8224

Meet

Last Thursday of every month at

members home, contact Secretary.

www.naki4wd.org



Taranua 4WD Club

C/- 20 Pukerua Beach Road, Pukerua Bay.

President Phil Barnard : phil.barnard@xtra.co.nz

Secretary Stuart Barton : stuart.barton@clear.net.nz

Meet

Second Tuesday of every month

7.30pm at Paraparamu RSA

www.taranua4wd.org.nz



Twin City Four Wheel Drive Club

PO Box 5137, Greenmeadows, Napier

President Graham Neale : 021 949 842 :

graham.nealr@wrcdevelopments.co.nz

Secretary Graham Brooker : 027 327 8683

Meet

Second Wednesday of each month at

7.30pm, Taradale RSA

www.twincity4x4.co.nz



Valley 4WD Club

13 Lemonwood Grove, Maungaraki

President Mark Stockler : 04 4796849 : Mark.msr@xtra.co.nz

Secretary Mark SKID Pincock : 027 241 7757 :

skiddynz@live.com

Wairarapa Four Wheel Drive Club

PO Box 792, Masterton

President Gavin Oakly : 06 377 3862

Secretary Gail Smith : 06 379 8334 : gail@justphotosonline.com

Meet

Last Tuesday of every month 7.30pm at the Masterton

Cosmopolitan Club.



Wanganui 4WD Club

PO Box 973, Wanganui

President Paul Chapman : 0274 549 0054 :

paul@dmlconstruction.co.nz

Secretary Sandra Sarginson : 06 343 7041

sandra.warren@xtra.co.nz

Meet

First Tuesday of month, 7.30pm

Wanganui Race Course Purnell St

Wellington Family 4x4 Club

c/- 38 Bracken Rd, Newlands, Wellington 6037

President Marcus Steeneken : 021 439 183 : president@wf4x4c.org.nz

Secretary Tom Lo : 021 236 1630 : secretary@wf4x4c.org.nz

<http://wf4x4c.org.nz>

Wellington Jeep Club

PO Box 38203, Wellington Mail Centre

President Andrew Gee : agee@xtra.co.nz :

Secretary Tom Lo : 021 236 1630 : tswlo@rocketmail.com



Windy City Off-Roaders Inc.

c/o Howat Engineering 10 Horlor street,

Naenae, Lower Hutt 5011

President Mark Pincock (Skid)

skiddynz@live.com

Secretary Brian Hutchinson : 04 564 2699

brianhutch1@hotmail.com

Southern Zone Clubs



4X4 Events Inc

PO Box 13893 Christchurch 8140
President Craig Fraser : 027 354 6466
Secretary Andy Reeves : 027 699 1916 :
 ang.reeves.nz@gmail.com
Meet Fourth Thursday of month 7.30pm
 at Papanui RSA, 55 Bellvue Ave

www.4x4events.co.nz

Central Otago 4WD Club

P.O Box 314 Alexandra 9340
President Curtis Crawford : 03 446 9068 : co4wdc@gmail.com
Secretary Neil Connelly : connelly@xtra.co.nz

Clutha 4WD Club

P O Box 22 Balclutha 9240
Secretary Michael Sutherland : 027 446 5070
 michael.sutherland@farmside.co.nz



Land Rover Enthusiasts Club (Dunedin)

President Noel Harper : 03 454 4816 or
 021 454 481 : landibits@gmail.com
Secretary Suzanne Bell : 027 489 0584
 suzannev.bell@gmail.com
Meet Second Wednesday each month

www.lrec.co.nz



Landrover Owners Club (Otago) Inc

PO Box 47 Dunedin
President Michael Adam : 03 454 5467 or
 027 226 5257 : lisa.michael@clear.net.nz
Secretary Garry Beckingsale : 03 489 0292 or
 027 589 0292 : g.dbeckingsale@xtra.co.nz
Meet First Wednesday of the month
 7.30pm at Hurricane Rodders Inc
 51 Victoria Rd, Dunedin

www.lroco.com



Marlborough 4WD Club

PO Box 519 Blenheim
President Tony Ashworth 021 607 128 :
 asa3422@gmail.com
Secretary Neil Blackie : 027 510 9801 :
 blackie.neil@gmail.com

www.marlborough4x4club.weebly.com



Mid-Canterbury Four Wheel Drive Club Inc.

PO Box 327 Ashburton
President Stan Van Heeswyck : 027 555 8855
 president@ash4x4.co.nz
Secretary Michelle Ewart : 03 303 0855 :
 bulltahr@gmail.com
Meet Last Thursday of the month, 8pm at
 Club Rooms, Tinwald Domain,
 Maronan Rd, Ashburton.

www.ash4x4.co.nz



Nelson 4 Wheel Drive Club Inc.

PO Box 228 Nelson 7040
President Gordon Jackett: gordon@4wdnz.net
Secretary Alf Russell : alf@4wdnz.net
Meet First Wednesday of the month at
 Suburban Club, Tahunanui 8 pm.
 (except January)

www.4wdnz.net

Otago Recreational 4WD Group

12 Byron Street, Mornington, Dunedin 9011
President Graeme Thompson : 027 483 4285
 Graeme.Thompson@otagodhb.govt.nz
Secretary Greg Carroll : 027 415 3921: info@or4g.org.nz

www.or4g.org.nz



Shotover 4WD Club

PO Box 1503, Queenstown
President Nick Hazlett : 021 176 0766
 president@shotover4wdclub.co.nz
Secretary Leigh Carppe
 secretary@shotover4wdclub.co.nz
Meet First Wednesday of the month
 7.30pm at St John Ambulance
 Rooms, Douglas St, Frankton,
 Queenstown.

www.shotover4wdclub.co.nz

South Island Deaf 4x4 Club

c/- 6 Bellina Place Broomfield, Christchurch
President John Witchall : 021 048 5349
 s.i.deaf4x4club@hotmail.com
Secretary JoAnne Williams
 s.i.deaf4x4club@hotmail.com



South Island Niva Drivers Association (SINDA)

PO Box 34 Christchurch
Secretary Greg Barclay :
 tzoperations@coincascade.co.nz
Meet Third Wednesday of the month at
 Papanui RSA, Harewood Road,
 Christchurch at 7.30pm

LIFE MEMBERS OF THE NEW ZEALAND FOUR WHEEL DRIVE ASSOCIATION.

Awarded 2016 - John & Nonnie Cowper
 Awarded 2015 - Ces Horan
 Awarded 2015 - Kath Jaggard
 Awarded 2011 - Peter Vahry

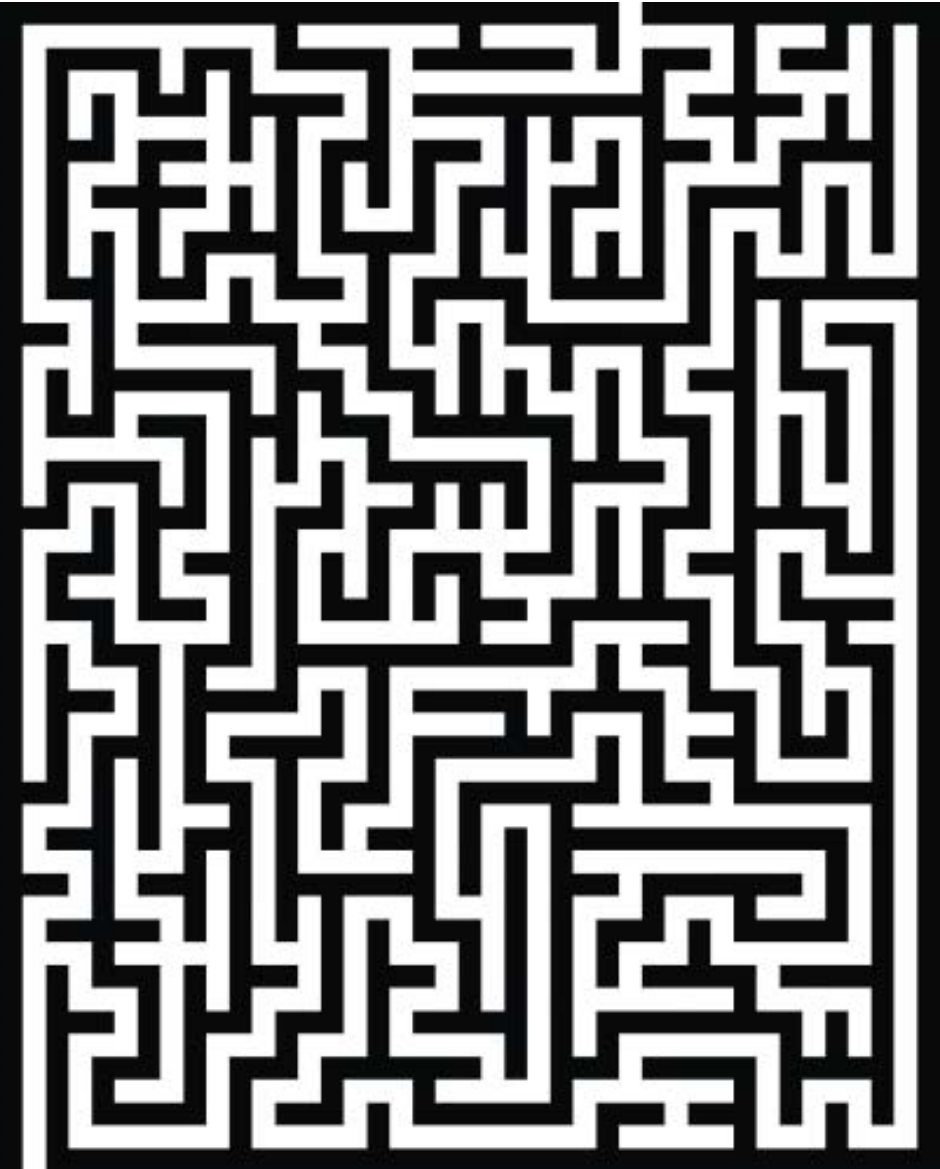


Kids Page

Can you spot the ten differences?



Can you find your way through?



Thinking Caps on...

- 1. How many bricks does it take to complete a building made of brick?
- 2. Before the days of motor cars, a man rode into town on his horse. He arrived on Friday, spent three days in town and left on Friday. How is that possible?
- 3. I'm not an airplane, but I can fly through the sky. I'm not a river, but I'm full of water. What am I?

RIDDLES

WHAT CAN YOU KEEP AND GIVE AWAY AT THE SAME TIME?

WHAT IS WHITE WHEN ITS DIRTY AND BLACK WHEN ITS CLEAN?

DIFFERENCES: 1. Number on side of vehicle bottom right. 2. Umbrella in foreground. 3. Umbrella loses red panel. 4. vehicle appears in middle of picture. 5. Two marshals in Orange in middle of picture. 6. Man in white jacket and yellow pants behind quad bike disappears. 7. Umbrella on the hill. 8. Two new people in yellow wet weather gear. 9. Umbrella on the ridge line goes. 10 ????
THINKING CAPS ON... 1. Only one! The last one! 2. The horse's name is Friday. 3. A cloud. RIDDLES: A cold. A Blackboard.

WESTCOAST 4x4

CHALLENGE

Over

4 Hundred Kms

Through

4 Towns

Across

4 Days

In your

4 x 4

PAPAROA RANGE

EASTER
Victoria
Forest Park
2017

A circuit of
the Paparoa
Range with scenic
& tuff route options

Entries Open 1st Nov

More details to follow

Contact: szpro@nzfwda.org.nz

