

Established in 1974, the objective of the Association is to further and improve Four Wheel Drive activities in New Zealand.

As a member of the NZFWDA, you become an integral part of this effort to ensure that present and future generations can continue to enjoy our country in four wheel drive vehicles.



OCTOBER 2013 - DECEMBER 2013

Next issue December 2013 - March 2014

NEWS

General Business discussed at the Executive Meeting in Wellington on 28 September 2013

- Conference and AGM 2014
- DNZ Walking Access Commission Forum / Mapping system
- DOC (new partnership)
- Database
- United 4WD
- Trail Torque
- Sponsorship
- Competition Regulations
- Membership Cards
- LVVTA Suspension panel
- Constitution (remits due 15 Nov)
- New Club Applications:
 - o Desert Defenders
 - o Port Valley 4x4 Club
 - o Off Road Aotearoa
- Insurance update
- Canterbury, Otago & Southland CMS's
- Adventure Activity Regulations
- Drug Free and Alcohol.
- Recovery of public vehicles
- Update on the Management Plan

NZFWDA President

Tony Burgess

P: 027 479 2636 ---- E: president@nzfwda.org.nz

I was delighted when Bobbie finally agreed to become the editor of Trail Torque magazine, however, I was not so pleased when the first thing she did was ask me to write 250 words about myself, I would rather have written about the job I do.

I first become involved in 4x4 as a young Scout when my Scout and Venture leaders carted us to, and around camp sites in S1 Landrovers. This led to me buying my own Landrover to get into the remote areas that I loved so much. In the later years I have almost always had a 4x4 of some sort. Lots of Landrovers and Suzuki's, but also Toyotas, Isuzu, Nissans, Holden and even a 4x4 BMW. Currently I am driving a Jeep Grand Cherokee Ltd and a Suzuki Jimny.

In 1997 the family and I joined Manukau 4x4 Club and the club made me a life member in 2009.

Over the last few years I have dragged my long suffering family to every remote corner of NZ by 4x4 and attended many safari and bush trips. While I haven't competed, I have



been a long time supporter of both trials and winch competitions and attend these events whenever I can.

I am currently in my third term as President which is a role I enjoy a great deal. It allows me to participate in a wide range of projects NZFWDA are involved in and I have learnt a lot about the workings of the various Government and private organisations we are involved with and to meet lots of members of NZFWDA which is why I look forward to being part of NZFWDA for a while longer.

Trail Torque Editor

Bobbie Kincaid : editor@nzfwda.org.nz

Postal Address

New Zealand Four Wheel Drive Association Inc.
PO Box 90960
Victoria Street West
Auckland 1142

Website: www.nzfwda.org.nz

Facebook: <https://www.facebook.com/NewZealandFourWheelDriveAssociationInc>

Upcoming changes to the suspension rules...

"We are waiting on LVVTA to confirm a timetable and confirm our nominations for the suspension panel...so a detailed article will appear next" issue, Tony Burgess.

DISCLAIMER: The opinions expressed in this issue are those of the contributors and not necessarily those of the Association, it's Executive Members or the Trail Torque Editor.

NZFWDA Secretary

Kath Jaggard

E: secretary@nzfwda.org.nz



It's amazing how totally four wheeling gets in to your blood. My hubby Russell and I have been members of the Whangarei Four Wheel Drive Club since 1992. Our children grew up with an extended family and enjoyed learning to drive down Pouto Peninsula. Now our young grandsons

are loving it as well (not the driving part yet! The oldest is only 5).

Our first four wheel drive was an LJ10 Suzuki that had been repowered with a Datson 120Y motor. This was an absolute fun little, go anywhere, do anything machine. A number of vehicles later, we now drive a standard 1999 Jeep Wrangler, and love it.

Over the years, I have been involved with the Club Executive, Zone Executive and now for the second time the National Executive. A friend of ours once said we spend more time

talking about four wheeling then we do actually four wheeling. Sometimes he is right. I am the current National Secretary. This involves keeping accurate records of exec meetings, receiving and forwarding mail, assisting with AGM / conference organising and now writing for Trail Torque.

I see the role of Secretary as being all about communication, and keeping everyone true to the Constitution. We have a great team on the current Executive working hard for us all to promote and sustain our sport.

NZFWDA National Public Relations Officer

Roger Seymour

P: 04 586 2518 ---- M: 021 424 351 ---- E: pro@nzfwda.org.nz



I have been in the 4wd scene since 1995 when my children were small and we did many family 4wd trips, not

just locally, we have driven all regions of NZ. Later when my son Mitch was driving he became very involved as well and we moved to tougher trucks and more tougher trucks as years went by. Now I am in both CCVC and Valley 4wd Clubs.

Living 4wd vehicles in the garage now include an Audi Q7 that does not go off-road, a Range Rover that is a daily driver, a Nissan tough truck that is great in the bush, and a very high tech 720hp Competition Trials Truck, while it is owned by myself, it is driven

by my son Mitch. Mitch (aged 21) always rates in the top ten in NZ 4x4 competition, he has won several trials over the past two seasons, and is also the Central Zone truck scrutineer for the Competitions Committee.

My role is NZ PRO. My job is mainly centred around land access and maintaining the integrity of the Association. I work to ensure that good relations are kept with both national and private landowners. I also try to moderate attitudes between different Clubs and parties involved in 4WDing.

NZFWDA Competitions Officer

Neville Dunton

P: 07 578 2689 ---- M: 027 446 5634 ---- E: nevvd@xtra.co.nz



I am a life member of BOP4WD Club Inc having first joined that Club in 1982. My first 4WD vehicle was

a Lada Niva; and one of the first club outings I did with BOP4WD Club in that truck was on a rainy winter's day on a very slippery and muddy Neavesville Track. Neville, Neavesville, and Niva, became synonymous with slip, sliding, away..... there were lots of slips, lots of sliding, and a fair few "away" moments!

I have been an avid 4 wheeler for many years and really enjoy all aspects of 4 wheel drive sport and

recreation either in my D class trials truck or in my trusty Patrol on some back country trails. Whenever possible Catherine and I like to try new 4WD challenges; one of the best to date for us was to co-drive the Rubicon Trail in 2011; 5 days of camping and driving over 38 miles of awesome terrain.

I am currently the National Competitions Officer, and lead a great executive team looking after the NZFWDA 4x4 National competitions.

NZFWDA Northern Zone President

Russell De Luca

P: 07 576 2202 ---- E: nthzpresident@nzfwda.org.nz



We bought our first 4WD vehicle (a 1996 Jeep XJ Cherokee) in 1999. Soon thereafter we joined the Bay of Plenty 4WD Club and the NZ Jeep Club, thereby beginning our introduction to four wheeling.

Needless to say we soon became hooked, bought our next Jeep (a 1997 TJ Wrangler) in 2001 which we then began modifying to make more trail-worthy. Several years (and thousands of dollars) later we are still enjoying tough shiny four-wheeling in our TJ as well as more moderate shiny runs in our less modified 2004 WG Jeep Grand Cherokee Overland which we bought in 2006 to replace the original trusty old XJ.

Initially the whole family (including our two daughters) were involved with four-wheeling, but these days (the kids having grown up and flown the coop) it's just me and my wife Sandra who, when she's not herself driving, spends

most of her time out of the Jeep running the trails, which she assures me has nothing to do with my driving skills (or lack thereof).

I became President of the NZFWDA Northern Zone in 2011, after a stint as NZ Jeep Club delegate and more latterly Zone Vice-President. In my role as Northern Zone President, most issues I become involved with relate to land access (no surprises there) which in recent times have included co-ordinating a major upgrade of the Waitawheta 4WD track as well as lodging submissions on DOC draft Conservation Management Strategies applying within the Northern Zone area.

The Executive are volunteers who administer the Association. Divided into three regional zone committees - Northern Zone, Central Zone, Southern Zone and a Competition Committee.

Northern Zone Clubs

Please email club detail changes to editor@nzfwda.org.nz



4X4 Challenges NZ Inc.

PO Box 37 143, Parnell, Auckland
President Tim Fensom : 027 487 1733
president@4x4challenges.org.nz
Secretary Eileen Austin : eilaustin@xtra.co.nz

4x4challenges.org.nz



Auckland Four Wheel Drive Club Inc.

PO Box 6712 Wellesley St Auckland
President Jack Talbot : 027 224 4215
president@auckland4wd.org.nz
Secretary Peter Vahry : 027 431 0923
secretary@auckland4wd.org.nz
Meet Third Monday of every month at 8pm,
 Vintage Car Club, Fairfax Ave, Penrose.

auckland4wd.org.nz

Bay of Islands 4x4 Club

PO Box 443, Kerikeri
President Andrew Graham
Secretary Martin Rivers : 021 293 7215 : mart.rivers@gmail.com



Bay of Plenty Four Wheel Drive Club

P.O.Box 2300, Tauranga
President Dave Smith : 021 100 4023
david394c@gmail.com
Secretary Matt Pennefather : 021 0236 8358
mathew.pennefather@live.com
Meet First Thursday of each month 7.30 pm
 Classic Flyers, Aerodrome Rd,
 Mt Maunganui.

www.bop4wd.org.nz



Counties 4 Wheelers

PO Box 72 1394, Papakura
President Russell Biggs : 021 935 527
russell@biggsconstruction.co.nz
Secretary Lorraine Chung : 027 242 5968
Lorraine.Chung@asb.co.nz



Cozzie Four Wheelers

PO Box 4133 Hamilton
President Dom Barnes : 027 823 3018
dom@gymcare.co.nz
Secretary John Lisignoli : 021 204 5990
z12po@xtra.co.nz
Meet Third Tuesday most months, 7.30pm
 Hamilton Cosmopolitan Club,
 Claudelands.

East Coast Four Wheel Drive Club

PO Box 2180, Gisborne
President Rod Dear : 06 868 4882 : rjandradear@hotmail.com
Secretary Graeme Dearness : 06 867 8130
graeme@graemesaudio.co.nz



Eastern Bay Twin Diff Club Inc.

PO Box 588, Whakatane 3120
President Ron Sturme : 027 226 7915
r.dsturme@xtra.co.nz
Secretary Kylie Montrose : 07 304 8801
kgwest@xtra.co.nz
Meet First Wednesday of the month,
 The Whakatane Club, 84 The Strand.

EBTDCLUB@gmail.com



Geyserland 4WD Club

PO Box 2085, Rotorua
President George Estcourt : 021 338 312
president@geyserland4wd.co.nz
Secretary Marika Fritzsche : 021 053 2555
secretary@geyserland4wd.co.nz
Meet First Wednesday of every month
 (except January) 7.30pm at
 'Kurious Kiwi', 209 Fenton St.

www.geyserland4wd.co.nz



TECT all terrain Park
State Highway 36, Ngawaro

TECT all terrain Park, comprising of 1,650 hectares of pine forest and native bush in the Western Bay of Plenty region is being transformed into an adventure playground. The park has been established as a joint initiative of Western Bay of Plenty District Council and Tauranga City Council to implement part of their sub-regional parks policy with the intention to:

- Successfully establish and facilitate a regional destination that caters for a wide range of adventure and education activities in a managed sustainable way
- To develop a unique recreational venue that can position the sub-region nationally and internationally
- To showcase sustainable, energy efficient and low impact design, materials and techniques.

Fortunately, amidst these lofty intentions, there was room to contemplate provision of land area for motorsport activities and, for the past 8-9 years, Bay of Plenty 4WD Club has been working with the Councils and Park management to secure and develop an exclusive 4WD area within the park.

BOP Club has been partnered in these endeavours with Land Rover Enthusiasts Club, Rotorua. Establishment of the park has been a slow process involving initial land acquisition, amalgamation of titles, resource consent applications and approvals, and a myriad of formalities. A user group forum was established some years ago to ensure registered user groups had a voice in the many decisions necessary to bring this park to life.

The park is now "open" and there are numerous general park facilities including trails developed for walking, running, beginner motorcycling, mountain biking and horse riding. Much of the park is subject to formal

lease or agreements to lease between TECT Park and individual user groups. Target shooting, motorsport, 4x4, and model aircraft facilities are currently being developed within the park by various Clubs. The exclusive 4WD area within the park is committed to BOP4WD Club in partnership with LREC, Rotorua and exclusive 4WD "zones" have been incorporated in TECT Park's Activity Zone Map which forms part of the regional plan. BOP4WD Club was initially allocated 160 hectares of production pine forest in the NE corner of the park ("Mangatoi Block") and development commenced in that area about 4 years ago. Development and Management Plans for this area have been completed and approved by TECT Park and Councils. The intention is to develop a range of sporting, recreational and family oriented activities involving off-road capable vehicles including (but not limited to) 4x4 outings, runs, trials, gymkhanas, competitions, training, social functions, exhibitions & displays, meetings, and other associated activities for both BOP4WD and LREC Club members

Northern Zone Clubs Continued...

Please email club detail changes to editor@nzfwda.org.nz

Kaitia 4WD Club Inc.

PO Box 125, Kaitia 0441

President Greg Hodgson : 09 409 4167 : greg.barb@xtra.co.nz

Secretary Dave Currie : 09 406 7518

Meet First Monday of the month, 7pm, Kaitia RSA.

kaitia4x4club@hotmail.com



Manukau Four Wheel Drive Club Inc.

PO Box 75-199, Manurewa

President Bernie Konz : 09 236 6856

Secretary Joy Browne : 09 238 7298

Meet First Tuesday of month (except Jan), 7.30pm at South Auckland Car Club, 1R Great South Rd, Papakura.

www.manukau4wd.org.nz



Kauri Coast 4WD Club

PO Box 18, Dargaville

President Fred Worters : 021 135 5570

Secretary Serena Carran : 09 439 0064

kauricoast4wdclub@yahoo.co.nz
Meet Second Wednesday of the month at 7.30pm Northern Wairoa Boating Club

www.kauricoast4wdclub.wikispaces.com



Northland Family Four Wheelers

PO Box 8098 Kensington Whangarei 0145

President Colin Thorburn
nglasgow300@gmail.com

Secretary Brett Hogan : 09 437 7438
onehogan@xtra.co.nz

Meet Second Thursday each Month, clubrooms in Glenbervie.

www.nffw.net



Land Rover Enthusiasts Club (Rotorua)

PO Box 2113, Rotorua 3040

President Colin Parr : 027 499 6023

partons@xtra.co.nz

Secretary Allan Hoffman

allan.hoffman@rdc.govt.nz

www.lrerot.wikispaces.com



Norwest OHV Club Inc.

PO Box 171, Kumeu Auckland

President Simon Collett
president@norwestohv.org

Secretary Dan Farley
secretary@norwestohv.org

Meet Second Monday of the month, 7.30pm Paddy's Bar, Shamrock Drive, Kumeu.

www.norwestohv.org



Land Rover Owners Club (Auckland)

PO Box 68 859, Auckland 1145

President Jeremy Bleakley : 021 289 7009

Jeremy@albanyins.co.nz

Secretary Neil Abbott : 021 281 1509

neil.abbott@manumarine.com

Meet First Monday of the month, 7.30pm

Horse & Trap Pub, Enfield St, Mt Eden

www.lroca.org.nz

NZ Jeep Club

c/- 196 Tuapiro Road, RD3 Katikati, 3170

President Mark Spalding : 09 536 7288

Secretary Sandra Cohen : 07 549 1823 : scohen@xtra.co.nz

and other owners of 4WD vehicles including members of ORANZ. Occasional use by SARS, NZ Police, and armed services personnel with whom the local 4WD clubs have various associations is also anticipated. Eventual development of clubrooms and associated facilities including maintenance workshop, and vehicle wash-down area is also planned.

This exclusive 4WD area is subject to forestry rights in respect to the plantation forests. These rights expire in about 16 years but a recent decision by the forestry owners to withdraw their access agreements has resulted in Mangatōi Block being locked up until after harvest in 16 years. This unexpected decision has obviously left BOP4WD and LREC Clubs in a somewhat large "hole"..... All has not been lost....The clubs had previously developed good relations

with neighbouring motorsport users who had formed Te Matai Motorsport Inc (TMMI). This group includes major local, regional, and national motorsport associations. TMMI has just signed a Deed of Lease, for an area of land comprising about one quarter of the total park area. BOP4WD Club is now a member club of TMMI and has been offered a 16 year sub-lease of land within the TMMI area in order to develop new trails similar to those which had commenced in Mangatōi block. The intention is that this area will become an exclusive 4WD area within TECT Park for the next 16 years by which time the forestry rights on Mangatōi block will have terminated and the clubs can return to their originally allocated area. Although the Park is now "open" the 4WD clubs' development plans have been seriously delayed. Currently the TMMI exclusive 4WD area is undergoing forestry thinning which has

further delayed the clubs' development plans. Notwithstanding these delays the clubs are optimistic that initial trails will be opened late this summer season. If any NZFWDA members or clubs are interested in helping with these developments you are welcome to contact BOP4WD Club. In the future persons or clubs wishing to access the 4WD area will need to arrange this through BOP4WD Club; a web-based booking calendar is planned to make this process quick and easy.

Neville Dunton
Executive member, BOP4WD Club Inc
National Competitions Officer,
NZFWDA Inc

Northern Zone Clubs Continued...

Please email club detail changes to editor@nzfwda.org.nz



Rodney Off Road Club Inc.
47 John Dee Crescent, Red Beach 0932
President Jimmy Kiddie : 027 222 6366
jimmycando@xtra.co.nz
Secretary Matt Carnell : 029 200 8153
mathias@actrix.co.nz
Meet Second Wednesday of every month,
8pm at the Wade Hotel, Silverdale

www.rodneyoffroadclub.co.nz
rodneyoffroadclub@gmail.com



Shore 4 Wheelers Inc.
PO Box 100-404, NSMC, Auckland
President Kerry Dornbusch : 021 277 6622
nakerz@xtra.co.nz
Secretary Paul Hudson : 09 817 9248
paulhud@xtra.co.nz
Meet Second Wednesday of the month 7pm
at North Shore Rod & Customs Car
Club, 4/26 Hillside Rd, Glenfield.



South Waikato 4WD Club
C/- K Morriss 246 Parapara Rd Tirau 3410
President Craig Tomalin : 027 490 6785
Secretary Karen Morriss : 07 883 1567
Meet First Wednesday of each month
7.30pm at the Tirau Hall.

Sulphur City 4 Wheelers

c/- PO Box 10085, Rotorua 3046
President Steve Wright : 0274 507 990 : jilstev@xtra.co.nz
Secretary Andrew Sutherland : 027 482 1108
utherlandlog@xtra.co.nz



Taupo 4WD Club
PO Box 457, Taupo
President Graeme Wilton : 022 0209935
president@taupo4wd.net
Secretary Simone Dasent : 027 253 3221
info@taupo4wd.net

www.taupo4wd.net



Thames Valley 4WD Club
C/- K. Barriball, Waitakaruru, R.D.6, Thames
President Paul Bax : 027 485 8797
pmadbax@xtra.co.nz
Secretary Keith Barriball : 07 867 3330
buddog@ihug.co.nz

United 4WD supporters

C/- Almara, RD 4, Albany, Auckland
Secretary Carmen Mills : 09 426 8830 : u4wd@nzfwda.org.nz



Waikato Four Wheel Drive Club
PO Box 9313, Hamilton
President Tom Douglas : 07 825 4900
douglasmonks@xtra.co.nz
Secretary Al Laslett : 027 201 0606
alkb75@yahoo.com
Meet Second Thursday of every month 8pm
at the Scouting Hall on Storey Ave.



Whangamata 4x4 Club
PO Box 299 Whangamata
President Graeme King
Secretary Chris Glucina
Meet Second Tuesday at 7:30pm at the
Whangamata Club.

www.whangamata4x4.org Whangamata4x4@gmail.com



Whangarei 4WD Club
P.O.Box 1850, Whangarei
President John Ellis : 09 435 6260
johnellis1@xtra.co.nz
Secretary Kay Ludgate : 09 435 5518
secretary@whangarei4x4.org.nz
Meet Second Tuesday of month at 7.30pm
Kamo Club.

www.whangarei4x4.org

Wilderness Ridge Riders

PO Box 101-910, NSMC, North Shore City
wildernessrr4wd@gmail.com

Central Zone President

Max Wheatley

E: prescz@nzfwda.org.nz



The idea of this first column is to introduce my self to you in my role as president of the Central Zone. Fortunately Bobbie has give me some ideas on where to start, so here goes!

How did you get involved in 4WD?

Back in the mid 70's one of my friends married an outdoors type of person who owned a mighty Toyota FJ40 and was a member of Wellington's Cross Country Vehicle Club. At that time Daytona beach buggies where the in thing and there where a number of them in the club so I built one and then it just went from there.

I remember watching a Range Rover on a number of club trips and decided then that I wanted one, it only took 26 years to get it!! Now I am a Land Rover man for ever.

Which clubs do you belong to?

In 1999 I came back to 4WD again and joined the Manawatu 4 Wheel Drive Club, which I am still a member of, but not very active with them.

I am also a member of Central Districts 4 Wheel Drive Club and it is with these guys that most of my activity takes place.

What type of 4WD activities do you enjoy?

I don't have the money to go trialling or worry too much about the "red mist", and generally stay away from trials, although I did follow the trials circuit for a few years in my youth.

I have been in a couple of teams recovery type events that I have enjoyed.

I guess picking my way through an over grown bush trail would be my favourite activity.

How many of my family are involved?

Really only me, once in a while my wife Cheryl will join me.

What does the president do?

President roles are usually easy ones, the hard work is done by the Treasurers and Secretaries. All I do is keep a few meeting in control.

From time to time with the aide of the PRO I may be required to represent the local face of NZ4WDA.

I am always happy to here from members so you are more than welcome to drop me an email at prescz@nzfwda.org.nz

Max.

Central Zone Clubs

Please email club detail changes to editor@nzfwda.org.nz



Capital Cruisers 4WD Club
PO Box 38725, Wellington Mail Centre



Hawkes Bay 4WD Club
PO Box 1423 Hastings
President John Jones : 06 877 5868
jandhjones@xtra.co.nz
Secretary Tracey Moss : 06 877 8400
mossimo764@hotmail.com



Central Districts
PO Box 130 Feilding
President Dave Mackrow
cd4x4club@hotmail.co.nz
Secretary Nicki Andersen
d4x4club@hotmail.co.nz



King Country 4WD Club
20 Waitataura Road, RD3, Te Kuiti
President Dennis Frankhouser
4wdrulz@clear.net.nz
Secretary Lynne Frankhouser
4wdrulz@clear.net.nz
www.kc4wd.co.nz

Costa Plenty 4x4 Club

c/o P O Box 130 Feilding 4740
President Laurie Goldfinch : 027 246 6133
Secretary Nicki Andersen : costaplenty@hotmail.co.nz



Kiwi 4x4
President Anthony Sayers : 021 989 093
president@kiwi4x4.org.nz
Secretary Reece Hearst : 027 458 9921
secretary@kiwi4x4.org.nz
www.kiwi4x4.org.nz



Cross Country Vehicle Club (Wellington) Inc.
PO Box 38-762, Te Puni, Wellington 5045
President Charles Odlin : codlin@odlin.co.nz
Secretary Terrence Broad :
terrenceandberyl@yahoo.co.nz
Meet Second Wednesday of each month at 7.30pm Petone Working Mens Club, Udy St.
www.ccvc.org.nz

Levin 4WD Club

C/- 32 Greenwood Boulevard, Otaki
President Paul Shivan : 04 904 6872 : pshivan@gmail.com :
Secretary Ken Douglas : 027 530 2614 : ken.douglas@xtra.co.nz



Feilding 4x4 Club
C/- 39 Seddon Street Feilding 4702
President Myles Norris
Secretary John de Burgh
jdeburgh@ihug.co.nz
www.feilding4x4.org



Manawatu 4WD Club
PO Box 5176, Terrace End, Palmerston North
President Andrew Francis : 06 376 7128
west.ridge@xtra.co.nz :
Secretary Peter Robertson : 06 356 9536
p.r.robertson@infogen.net.nz :
Meet Third Wednesday of month at 7.30pm Awapuni Community Centre, Newbury St, Palmerston North
www.m4wdc.org.nz



Central Zone Public Relations Officer

Brent Samson

M: 021 478 633 ---- E: czpro@nzfwda.org.nz



Hi, my name is Brent Samson and I am the Central Zone Public Relations Officer and a Steward for the National 4x4 Trials Competitions Committee.

I became involved in Four Wheel Driving Clubs approximately 10 years ago through family. I am the President of the Valley 4WD Club and a member of the Cross Country Vehicle Club. Over my years of membership in 4WD Clubs, I have progressed from 'shiny' 4WD trips to Hard Yakka to an interest in competition 4x4 events.

I own a Toyota Landcruiser tough truck and I have competed in some of the National 4x4 Trials events. I am looking forward to the upcoming competition season, which is my first season as a Steward. I also won the Sportsman of the Year for 2012/2013 for my involvement in many areas of competition 4x4 trials.

My wife and I both have roles on the Competitions Committee. My wife, Jenny, is the National Secretary. My father-in-law is also involved with the Cross Country Vehicle Club and is a trip leader and has held various roles with that Club. We are also preparing to introduce our new baby daughter to competition Four Wheel Driving this season.

My role as Central Zone PRO involves liaising with parties in the Central North Island who have an interest in Four Wheel Driving or who are

affected by Four Wheel Driving, such as DOC and Walking Access New Zealand. It is very helpful having Roger Seymour, who is the National PRO in Wellington, as this gives the NZFWDA a good representation at meetings as we are both able to attend.

**Saturday 9th
November
South Coast
(Red Rocks
and beyond)
Clean Up.**

Central Zone Clubs continued...

Please email club detail changes to editor@nzfwda.org.nz



Mt Egmont 4 Wheel Drive Club Inc.

PO Box 8014, New Plymouth

President John Jenkins : 021 279 9435

yslaautosport@xtra.co.nz

Secretary Donna Moratti : 06 756 8422

arthur.moratti@xtra.co.nz

Meet Second Monday of Month, 7.30pm at the Inglewood Club.

www.egmont4wd.co.nz



Taranua 4WD Club

PO Box 4 Paraparaumu.

President Brent Gibson : bgibson@qtl.co.nz

Meet Second Tuesday of every month
7.30pm at Paraparaumu RSA

www.taranua4wd.org.nz



Twin City Four Wheel Drive Club

PO Box 5137, Greenmeadows, Napier

President Floyd Du Plessis

floyd2004@hotmail.com

Meet Second Wednesday of each month at
7.30pm, Taradale RSA

www.twincity4x4.co.nz



Offroad Wairarapa 4x4 Club

PO Box 405, Masterton 5840

President Tony Oliver : 027 552 2202

esthero23@xtra.co.nz

Secretary Mike Rolls : 06 370 9328

mikeandlizrolls@xtra.co.nz

Meet Second Tuesday of every month
(except January) at 35 Perry Street,
Masterton 7.30pm

www.orw.org.nz



Valley 4WD Club

13 Lemonwood Grove, Maungaraki

President Brent Samson : 021 478 633

jen_brent@xtra.co.nz

Secretary Neil Blackie : blackie.neil@gmail.com



Taranaki Family 4x4 Club

82 Wallath Rd, New Plymouth

Club Captain Patrick Adams

pro@naki4wd.org

Secretary Anthony Thorpe

exec@naki4wd.org

Meet Last Thursday of every month at
members home, contact
Secretary for more information.

www.naki4wd.org



Windy City Off-Roaders Inc.

c/o Howat Engineering 10 Horlor street,
Naenae, Lower Hutt 5011

President Mark Pincock (Skid)

skiddynz@live.com

Secretary Brian Hutchinson : 04 564 2699
brianhutch1@hotmail.com



Four Wheel Drive Events/Trips/Runs

From the Cape to the Bluff

Email your Club Event to editor@nzfwda.org.nz

All due care has been taken entering these details, NZFWDA cannot take responsibility for any changes or inadvertent inaccuracies. Potential participants should contact the event organiser.

5 OCTOBER - 6 OCTOBER Mainland Winch Challenge Series Round 5, Makihiki. Scrutineering Saturday morning before commencing 10-12 stages followed by a further 3-4 night stages that night. Prize giving Sunday followed by the AGM. Details at www.mainlandwinchchallenges.co.nz or phone Stan on 027 555 8855

5 OCTOBER Mt Egmont 4x4 Trials Pairs Competition. Held in Inglewood. Open to all classes but pairs must consist of the same class truck. Limited to 50 pairs all entries go in the draw to win a \$1100 Powerbuilt Toolbox full of tools. See <https://www.facebook.com/pages/Mt-Egmont-4WD-club-Taranaki/187396624642267> for details or email natasha.thomason@vector.co.nz.

6 OCTOBER Mid Canterbury 4WD Club Mudplug at Makihiki. Same site as the Mainland Winch Challenge the day before. Open to all 4WD's with good mud tyres. Helmets and safety belts to be worn. Rated recovery points front and rear with at least one recovery stop. First aid kit and fire extinguisher also to be carried. Wof not req but vehicle must be in sound condition and will be scrutineered before the event. Two classes - Club truck up to 33" tyre size; Club truck open tyre size. \$35 entry fee limited to 30 vehicles. Spectators Adults \$10.00; 15 years and under free. Food and drink etc. available. Competition begins at 10.00 am. Rain, hail or shine. There will be no postponement. Entry details phone or text Andrew 027 630 0950 or email barnesy5767@gmail.com

18 OCTOBER - 20 OCTOBER Manukau winch Challenge to be held in the Onewhero area. The NZ1 competition will be run in conjunction. Friday night stages and all day Saturday. There will be a meal and prize giving on the Saturday evening for competitors and officials. Entry forms available at www.manukau4wd.org.nz

25 OCTOBER - 28 OCTOBER Norwest 24 Hour Teams Challenge Location will be on a private farm (700+ acres) about 30kms out of Ruawai, plenty of space for camping etc. Will be teams of 3 trucks. Contact Graeme 027 244 2443. www.norwestohv.org/4x4/

28 OCTOBER Southern Safari. From Picton to Bluff travelling over some of the South Island's most scenic tracks such as Porika Track (Nelson Lakes), Napoleans Hill (West Coast), Clayton Pack Track (South Canterbury), McKenzie Pass (South Canterbury/Otago), Omarama Saddle (North Otago), Thomson Gorge Road (Otago) and many more in between. Bookings now open and will be limited. For more information contact John McDonald on 03 308 0443 or email szpro@nzfwda.co.nz website www.ash4x4.co.nz/ss

3 NOVEMBER Hauraki Amped National 4x4 Trial, Round One of the NZFWDA National 4x4 Trials 2013/2014 Season. Hosted by South Waikato 4x4 Club at 340 Kakahu Road, Okoroire.

Central Zone Clubs continued...



Wanganui 4WD Club

PO Box 973, Wanganui

President Grant Harrison : 0272 485 943
grant@hiremasterwanganui.co.nz

Secretary Sandra Sarginson : 06 343 7041
sandra.warren@xtra.co.nz

Meet First Tuesday of month, 7.30pm
Wanganui Race Course Purnell St

Wairarapa Four Wheel Drive Club

PO Box 792, Masterton

President Peter Pope : 06 377 1434 : peteshirl@xtra.co.nz

Secretary Julian Rowntree : 06 377 7238 : juliancarol@xtra.co.nz

Meet Last Tuesday of every month 7.30pm at the Masterton Cosmopolitan Club.

Wellington Family 4x4 Club

c/- 38 Bracken Rd, Newlands, Wellington 6037

President Pete Carmichael : daimler350@hotmail.com

Secretary Alan Greeves : 027 448 8014
alan.geeves@slingshot.co.nz

Wellington Jeep Club

PO Box 38203, Wellington Mail Centre

Secretary Warren O'Connor : 04 234 6340 : woconnor@paradise.net.nz

National 4x4 Trials Calendar

Round 1; Sun 3rd Nov 2013 in the Northern Zone, hosted by South Waikato 4x4 Club.

Round 2; Sun 8th Dec 2013 in the Northern Zone, hosted by BOP 4WD Club.

Round 3; Sat 25th Jan 2014 in the Central Zone hosted by Wanganui 4WD Club.

Round 4; Sun 16th Feb 2014 in the Central Zone hosted by Valley 4WD Club.

Round 5; Sun 16th March 2014, in the Central Zone, hosted by the Manawatu 4WD Club.

Round 6; Saturday 19th April 2014 on Easter Weekend hosted by: Counties 4 Wheelers



More Four Wheel Drive Events/Trips/Runs

From The Cape to the Bluff

Email your Club Event to editor@nzfwda.org.nz

All due care has been taken entering these details, NZFWDA cannot take responsibility for any changes or inadvertent inaccuracies. Potential participants should contact the event organiser.

9 NOVEMBER Nelson Four Wheel Drive Club 40th Anniversary. The Nelson Four Wheel Drive Club is turning 40 in November this year. All present and former members, friends and sponsors of the Club are cordially invited to attend the celebrations at the Richmond Park Showgrounds in Richmond. To get the numbers right for the arrangements we would like to get more detailed information to previous members. As we are unable to track down all of the contact details we would kindly ask former Club members or anyone with relevant information to please contact the Club Secretary, Alf Russell 03 548 4797 or e-mail alf@4wdnz.net

16 NOVEMBER Matariki Forests 4x4 Safari event. This will be a tag-along event in and around Whangamata. Forest roads with a few nice dirt tracks, great look outs and the odd challenge or two. A fun family event. Organised by Whangamata 4WD Club.

23 NOVEMBER 42 Traverse Trimming. Set with the Department of Conservation for a cut back of the vegetation along the southern end of the 42 Traverse in the Tongariro Forest. If conditions allow, more work will be done on Sunday morning. To identify the level of interest, please email Peter pr@auckland4wd.org.nz

8 DECEMBER NZFWDA National 4x4 Trials, Round 2 hosted by Bay of Plenty 4WD Club.

24 JANUARY 2014 NZFWDA National 4x4 Trials, Round 3 hosted by Wanganui 4WD Club.

25 JANUARY - 26 JANUARY 2014

Tour de Whanga organised by Whangamata 4WD Club. This is an event set up for the more adventurous safari people. A forest based event using lots of tracks as stages over a 1.5 day event. In the Matariki Forests, we will use the forest roads to get into as much off road tracks as possible. This event is aimed at giving the regular experienced safari/tag-along people or those of you with tuff trucks that would like to take a family member along for an exciting but fun trip.

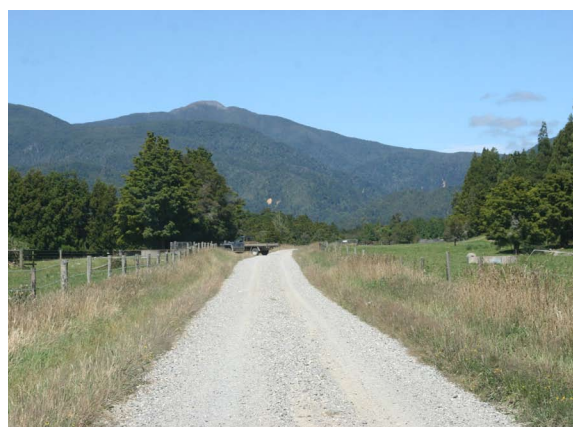
16 FEBRUARY 2014 NZFWDA National 4x4 Trials. Round 4 hosted by Valley 4WD Club.

1 MARCH - 2 MARCH 4x4 National Park 2014. Series of events to support local organisations www.4x4nationalpark.co.nz

15 MARCH 2014 NZFWDA National 4x4 Trials. Round 5 hosted by Manawatu 4WD Club.

19 APRIL 2014 NZFWDA National 4x4 Trials. Round 6 (Final). Hosted by Counties 4 Wheelers.

17 MAY 2014 Teams Tour de Whanga. This is an event aimed at the experienced safari guys with a tuff truck mate or for well set up 4x4 trucks. It is along the lines of the January event but staged on more challenging tracks that will require at least 1 winch per team. Each team will be required to complete a set number of stages during the day with points deducted for failure to get all 3 trucks to a stage end. To be held in Matariki Forest blocks organised by Whangamata 4WD Club.



Southern Zone President

Russell Quin

P: 03 477 0004 ---- 027 222 4879 ---- E: szpresident@nzfwda.org.nz



Russell, How did you get involved with Four Wheel Driving?

I am a broken down trumper and mountain biker, in the early days of Club Membership I use to put the

bikes on the back of our 4WD and bike, I would get someone to drive and bike down the hills.

Which 4x4 Clubs do you belong to? I am Secretary of the Landrover Owners Club (Otago) Inc. The Club caters for all makes and models. I have a TJ Jeep Wrangler.

What types of four wheel drive activities do you enjoy participating/watching?

I pretty much enjoy everything. I compete in Club mud Plugs as a navigator in a V8 buggy. Have done numerous 24 hour endurance events, Coast to Coast events, Reefton

Challenge. About to embark on the Southern Safari for two weeks from Blenheim to Invercargill.

How are your family involved?

Kids grew up in four wheel drives and Camping at the Clubs Camp. They both live overseas but first thing on their agenda when they get back this Christmas will be introducing my Grandchildren to camping and 4wding.

What does your role on the Executive have you doing?

General Dogs body just spent heaps of time putting docs together for the South Island CMS'S.

The Nelson Four Wheel Drive Club is turning ...

40



All present and former members, friends and sponsors of the Club are cordially invited to attend the celebrations on Saturday, 9th November 2013 at the Richmond Park Showgrounds in Richmond. To get the numbers right for the arrangements we would like to get more detailed information to previous members. As we are unable to track down all of the contact details we would kindly ask former Club members or anyone with relevant information to please contact the Club Secretary, Alf Russell at 03 548 4797 or e-mail alf@4wdnz.net.

Southern Zone Clubs

Please email club detail changes to editor@nzfwda.org.nz



4X4 Events Inc

PO Box 13893 Christchurch 8140
President Ash Sergeant : 027 844 1785
prodownhill123@gmail.com
Secretary Sangita Malcolm : 021 216 2112
bowhillroad@hotmail.co.nz
Meet Fourth Thursday of month 7.30pm
 at Papanui RSA, 55 Bellvue Ave

www.4x4events.co.nz



Land Rover Enthusiasts Club (Dunedin)

President Noel Harper : 021 454 481
landiman@kinect.co.nz
Secretary Suzanne Bell : 027 489 0584
suzannev.bell@gmail.com
Meet Second Wednesday each month 8pm
 Robbies Bar & Grill South Dunedin

www.lrec.co.nz



Landrover Owners Club (Otago) Inc

PO Box 47 Dunedin
President Michael Adam : 03 454 5467
Secretary Russell Quin : 03 477 0004
russell.quin@spicers.co.nz
Meet First Wednesday of the month 7.30pm
 at Hurricane Rodders Inc
 51 Victoria Rd, Dunedin

www.lroco.com



Marlborough 4WD Club

PO Box 519 Blenheim
President Trevor Jamie : 03 572 5385
Marl4x4@slingshot.co.nz
Secretary Helen Horton : 03 577 8480

www.marlborough4x4club.weebly.com

Central Otago 4WD Club

P.O Box 314 Alexandra 9340
President Bruce Kissel : 03 449 2042 : co4wdc@gmail.com
Secretary Jenny simmons : 027 224 3308 : co4wdc@gmail.com



Southern Zone Public Relations Officer

John MacDonald

E: szpro@nzfwda.org.nz

I started 4x4 driving by joining my local Club the Mid-Canterbury Four Wheel Drive Club and like most novices I took a perfectly good truck and turned it into a rough truck far too quick!. My first truck was a Toyota Prado SX and it has been a great truck, I have had a lot of fun in it, but it's stuffed so I am upgrading to a RZ Prado. I am still sorting it out; got the 33's and the 2" lift done, just a snorkel to go. I also have a Jeep Grand Cherokee and an old Discovery which I have chopped the roof off and replaced with a canvas top, so I have most makes covered.

I was elected as Secretary of my Club back in 2007, I spent 4 years as Secretary and then one year as President.

I am now on my third year as the Southern Zone PRO, a new challenge altogether. I believe to grow the NZFWDA we need to work together. We need to be proactive especially with access issues. With the shakeup in DOC I think we have a fantastic opportunity to get a better relationship with them and I am working with the other PRO to do this. We have a few problems on the horizon, but with

good communication and the support of the Clubs, I think we can get a good outcome for four wheel driving in New Zealand.

At the moment I am working on the Southern Safari, a 2 week 4x4 trip from Picton to Bluff. I have got the Clubs to run trips in their area and it is working well, so far they have found 20 tracks and they're all great trips. We will be kicking off 28th October from Spring Creek in Marlborough and I am really looking forward to it.



Southern Zone Clubs continued...

Please email club detail changes to editor@nzfwda.org.nz



Mid-Canterbury Four Wheel Drive Club Inc.
PO Box 327 Ashburton

President Stan Van Heeswyck : 027 555 8855
president@ash4x4.co.nz

Secretary Abby Calder : 03 307 7120
secretary@ash4x4.co.nz

Meet Last Thursday of the month, 8pm at
Club Rooms, Tinwald Domain,
Maronan Rd, Ashburton.

www.ash4x4.co.nz



Nelson 4 Wheel Drive Club Inc.
PO Box 228 Nelson 7040

President Tracy McCrenor : tracy@4wdnz.net
Secretary Alf Russell : alf@4wdnz.net

Meet First Wednesday of the month at
Suburban Club, Tahunanui 8 pm.
(except January)

www.4wdnz.net

Otago Recreational 4WD Group

12 Byron Street, Mornington, Dunedin 9011

President Graeme Thompson : 027 483 4285

Graeme.Thompson@otagodhb.govt.nz

Secretary Greg Carroll : 03 486 1733 : gregc5nz@gmail.com

www.or4g.org.nz



Shotover 4WD Club

PO Box 1503, Queenstown

President Nick Hazlett : 021 176 0766

president@shotover4wdclub.co.nz

Secretary Pam Haworth : 027 615 0701

secretary@shotover4wdclub.co.nz

Meet First Wednesday of the month
7.30pm at St John Ambulance
Rooms, Douglas St, Frankton,
Queenstown.

www.shotover4wdclub.co.nz

South Island Deaf 4x4 Club

c/- 6 Bellina Place Broomfield, Christchurch

President John Witchall : 021 048 5349

s.i.deaf4x4club@hotmail.com

Secretary Irene Weir : 027 579 487 (text only)

s.i.deaf4x4club@hotmail.com

South Island Niva Drivers Association (SINDA)

PO Box 34 Christchurch

Secretary Greg Barclay : tzoperations@coincascade.co.nz

Meet Third Wednesday of the month at Papanui RSA,
Harewood Road, Christchurch at 7.30pm



Adventure Activities

Health and Safety in Employment (Adventure Activities) Regulations 2011 : Guidance for Four Wheel Drive Clubs running "School Safaris"

Many clubs may not be aware that the recent introduction of the Adventure Activities Regulations could impact on the activities of member clubs. These regulations were introduced because the Government wanted to ensure that the reputation of New Zealand's adventure tourism industry was not tarnished by accidents resulting in injuries and fatalities among participants of adventure tourism activities. (Including Off road vehicles) Accidents in our adventure tourism industry have the potential to seriously impact on New Zealand's tourism industry which is New Zealand's second largest export earner worth \$23.4 billion a year. Some estimates put the cost of a single accident in an adventure tourism activity at \$10 million dollars. At the same time the government wanted to ensure that genuine clubs involved in outdoor recreation were not disadvantaged.

To ensure that commercial operators were providing a safe environment for their customers, the Government introduced Health and Safety in Employment (Adventure Activities) Regulations 2011. These regulations are intended to cover commercial operations but may impact on members clubs involved in activities that include non-members. This information is especially important for clubs involved in "School Safaris" or similar

What the regulations cover.

The regulations cover all "Adventure Activities" and driving of Off Road vehicles is specifically covered. There is no question that driving a Four Wheel Drive vehicle off road will meet the definition of an "Adventure Activity" and where a payment is made (including donations) the regulations will apply. Any person (The Operator) who provides an adventure activity to a participant in return for payment is covered by the regulations, unless exempt. Being a charity doesn't exempt the event from the regulations.

What Activities are exempt?

Events organised by sports (Four Wheel Drive) clubs or recreation clubs, or associations representing sports clubs or recreation clubs (i.e. NZFWDA), that have their main purpose as competition or recreation for members are specifically excluded from coverage by the regulations. Therefore most Four Wheel Drive club trips where only members (including day members and members of other NZFWDA clubs) take part in the trip are exempt. Winch Challenge and Trials competitions are exempt.

What is required for operators of "Adventure Activities?"

If the operator is not exempt, (i.e. Not a Four Wheel Drive Club) and are providing "Adventure Activities" they are required to be registered with OSH and have an Audited safety plan (amongst other things). This is a major, expensive and time consuming undertaking that requires

outside consultation from an approved supplier. It is not something that can be done by the average club member. Currently there are no, Rotary clubs, Fire Brigades etc and only a couple of schools registered to provide off road driving activities, and it would take about a year for these organisations to achieve the required standard. Therefore these organisations are not able to provide adventure activities.

What about School Safaris and similar?

There are a large number of these types of safari's undertaken each year. If these events are Club events run by a Four Wheel Drive Club and only include members of the club or members of other NZFWDA clubs, there is no problem, but it must be made very clear in all advertising that it is an event of XYZ Four Wheel Drive Club. If Non members wish to attend they MUST join the club according to the rules of XYZ club, agree to abide by the clubs rules and pay the Clubs fee for membership. (Note, Day or temporary members are not required to pay NZFWDA affiliation fees).

If the event is an event of a School or other community group it is most likely in breach of the regulations and NZFWDA strongly recommend that clubs do not become involved in the management of such events as they will be in breach of the regulations and liable to large fines. This creates a problem when a school (or similar) approaches a local four wheel drive club and asks them to assist the school in running a 4x4 fundraising event as very few clubs would want to turn down the opportunity to be involved in this type of event. There is no offence committed by a member of a Four Wheel Drive Club who attends an event as a participant, but if they offer any advice or guidance to other participants or the organiser they would fall foul of the regulations and be liable to prosecution.

Our suggestion is that if a club wishes to assist the local school with fund raising they run the event as a club event; it can be advertised as the XYZ Four Wheel Drive Club Safari, in association with ZYX School. All advertising MUST include the Club's name to make it clear it is a club event. All funds must be directed through the clubs account and any one attending must be a member of a NZFWDA club, or agree to become a Day or temporary member according to the clubs rules, including paying a day membership fee. This is a very important point and is also a requirement for the NZFWDA insurance. The school can have their own people on the club subcommittee running the event. At the conclusion of the event funds raised are then donated to the school.

If you would like further advice or information feel free to contact me.

Tony Burgess

President NZFWDA

Ph 027 479 2636 or 09 298 3194

Email burgess@xtra.co.nz or president@nzfwda.org.nz

NZFWDA Kids Page

Can you spot the five differences between these photos?



Did you know..

An egg that is fresh will sink in water, but a stale one will float.

The highest recorded speed of a sneeze is 165km per hour.

A snail can sleep for three years.

Our eyes are always the same size from birth, but our nose and ears never stop growing

Riddles...

- Q1: What goes up and down but does not move?
Q2: What gets wetter the more it dries?
Q3: Which hand is it better to write with?
Q4: In a one-story pink house, there was a pink person, a pink cat, a pink fish, a pink computer, a pink chair, a pink table, a pink telephone, a pink shower— everything was pink! What color were the stairs?

Betcha Can't Crack an Egg

What You Need: One egg

Instructions:

A fragile egg is actually pretty tough. See if you can put an egg in one hand and tighten your grip to the point of smashing it. Make sure you're not wearing a ring which might cause too much pressure on a small area, and be sure to do this over a sink just in case you are strong enough! The design of an egg makes the pressure spread over a large area and not a small spot, which is how you normally crack an egg. So, give it a try Hercules and test your strength!

Sudoku

2	3	4	1
3	4	1	2

Place a number between 1 and 4 in each empty cell so that every row, every column and every 2x2 box contains all the numbers 1 to 4.

3					4
		2	6		
5					1
4					6
		4	1		
2					3

Place a number between 1 and 6 in each empty cell so that every row, every column and every 2x3 box contains all the numbers 1 to 6.

Make your own Slime

What you'll need:

- water
- cornstarch
- bowl
- food coloring
- measuring spoons

How to make it:

1. In a bowl, combine 1 cup of water with 1 cup of cornstarch and mix with fingers until you reach a slimy, smooth consistency.
2. Add in a few drops of food coloring and your DIY slime is ready for fun!